

STANDARD DEPARTURE CHART -INSTRUMENT

RJSI / HANAMAKI

SID

HANAMAKI REVERSAL THREE DEPARTURE

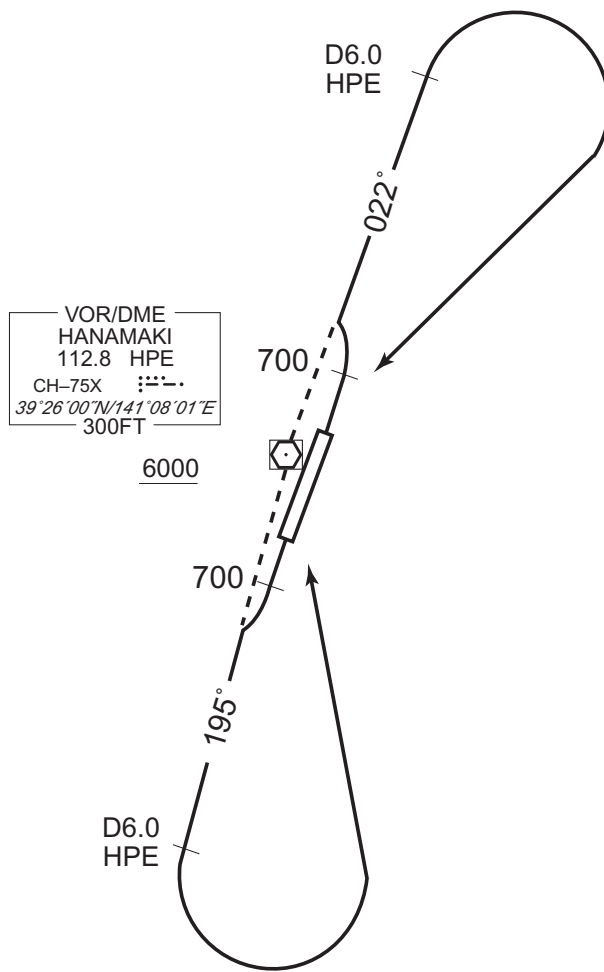
RWY 02 : Climb RWY HDG to 700FT, via HPE R022 to 6.0 DME, turn right...

RWY 20 : Climb RWY HDG to 700FT, via HPE R195 to 6.0 DME, turn left...
...direct to HPE VOR/DME.

Cross HPE VOR/DME at or above 6000FT.

Note RWY02 : 5.0% climb gradient required up to 3200FT.

OBST ALT 2691FT located at 9.1NM 058° FM end of RWY02.



CHANGE : PROC renamed. PROC course.