

TACAN RWY 23L

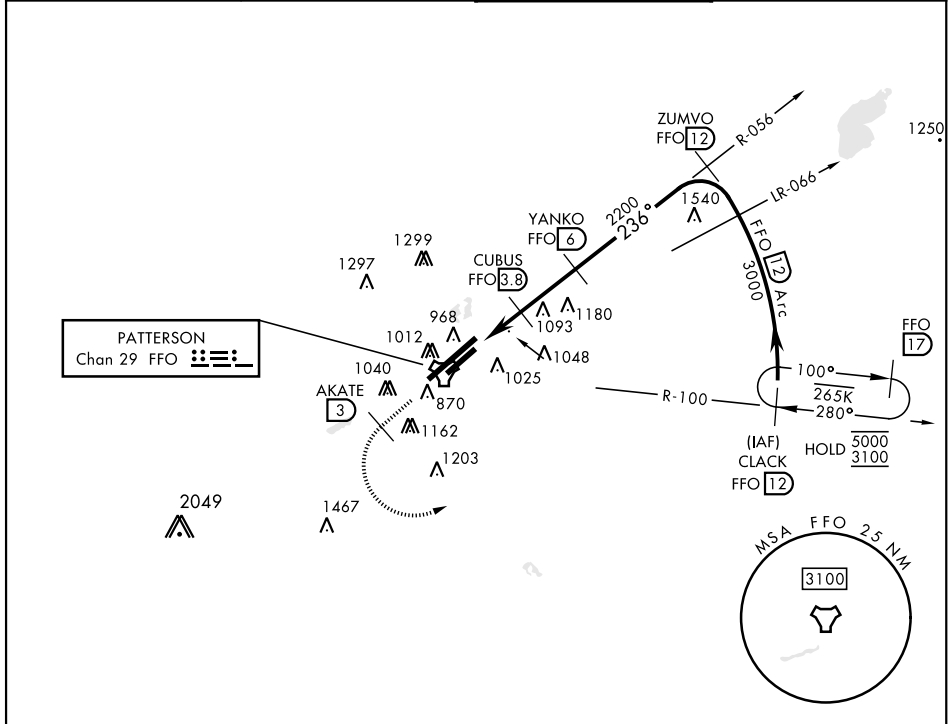
TACAN FFO Chan 29	APCH CRS 236°	Rwy Idg TDZE Arpt Elev 7000 818 823
--------------------------	----------------------	--

[USAF]

WRIGHT-PATTERSON AFB (KFFO)

V * When Rwy 23R VGS1 inop, circling to Rwy 23R NA at night. MISSED APPROACH: Climb to 2000 via FFO R-233, at 3 DME turn left direct CLACK climbing to 3000 and hold.

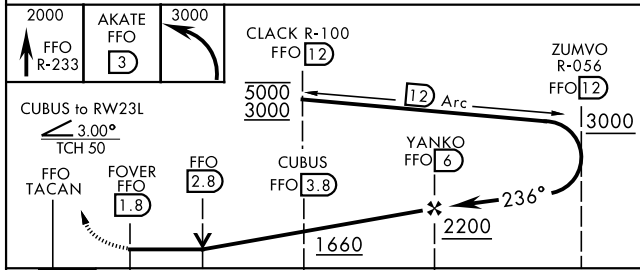
ATIS 124.475 269.9	COLUMBUS APP CON 118.85 269.275	PATTERSON TOWER 127.8 281.45	GND CON 121.8 335.8
------------------------------	---	--	-------------------------------



EC-2, 20 MAR 2025 to 17 APR 2025

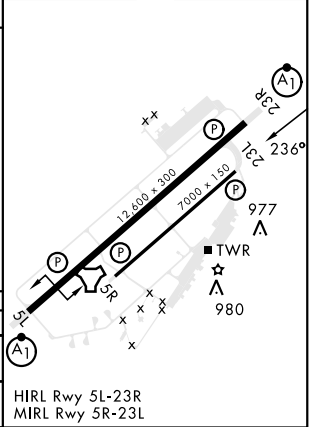
EC-2, 20 MAR 2025 to 17 APR 2025

EMERG SAFE ALT 100 NM 3700



ELEV	823	TDZE	818
------	-----	------	-----

CATEGORY	A	B	C	D	E
S-23L	1340-1 522 (600-1)	1340-1½ 522 (600-1½)	1340-1¾ 522 (500-1¾)		
CIRCLING*	1380-1 557 (600-1)	1400-1 577 (600-1)	1420-1½ 597 (600-1½)	1460-2 637 (700-2)	1620-2¾ 797 (800-2¾)



TACAN RWY 23L