

RNAV (GPS) RWY 23

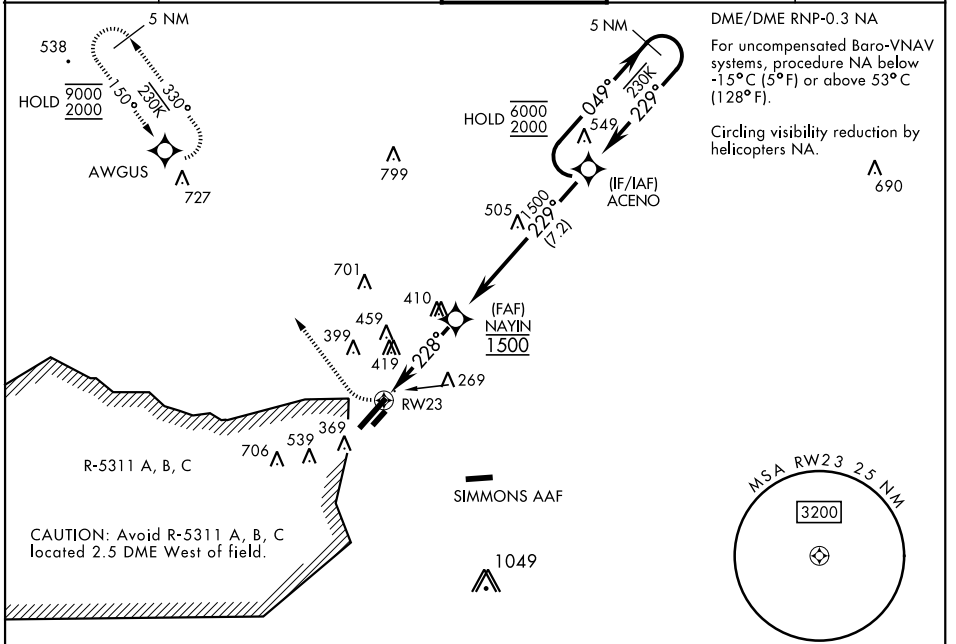
WAAS Chan 52202 W23A	APCH CRS 228°	Rwy Idg TDZE Arprt Elev 7501 200 225
--	-------------------------	--

[USAF]

POPE AAF (KPOB)

RADAR required		ALSF-1 	MISSED APPROACH: Climbing right turn to 2000 direct AWGUS and hold.
<p>▼ *When ALS inop, increase RVR to 40 vis to 3/4 mile. ** When ALS inop, increase vis to 1 1/4 mile. *** When ALS inop, increase CAT AB RVR to 55 and vis to 1 mile; CAT CD vis to 1 1/8 miles. **** Circling not authorized SE of Rwy 5-23.</p>			

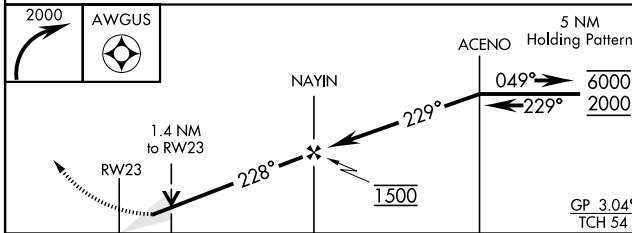
ATIS 132.3 353.725	FAYETTEVILLE APP CON 125.175 285.575 (271° - 090°) 133.0 290.25 (091° - 270°)	TOWER 135.025 291.1	GND CON 124.55 275.8	CLNC DEL 124.55 275.8
------------------------------	---	-------------------------------	--------------------------------	---------------------------------



SE-2, 20 MAR 2025 to 17 APR 2025

SE-2, 20 MAR 2025 to 17 APR 2025

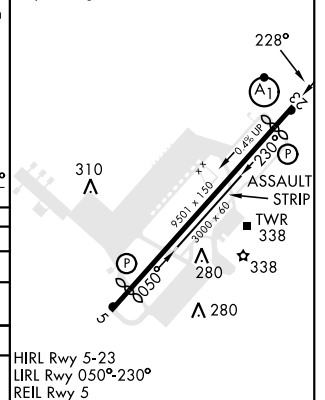
EMERG SAFE ALT 100 NM 5300



ELEV 225	TDZE 200
----------	----------

Rwy 05 Idg 7501'
Rwy 23 Idg 7501'

CATEGORY	A	B	C	D
LPV *	400/24		200 (200-1/2)	
LNAV/ **	572/40		372 (400-3/4)	
VNAV DA ***	720/24	520 (600-1/2)	720/55	520 (600-1)
****	760-1	542 (600-1)	920-2	1060-2 3/4
CIRCLING	760-1 542 (600-1)		702 (800-2)	842 (900-2 3/4)



RNAV (GPS) RWY 23

HIRL Rwy 5-23
LIRL Rwy 050°-230°
REIL Rwy 5