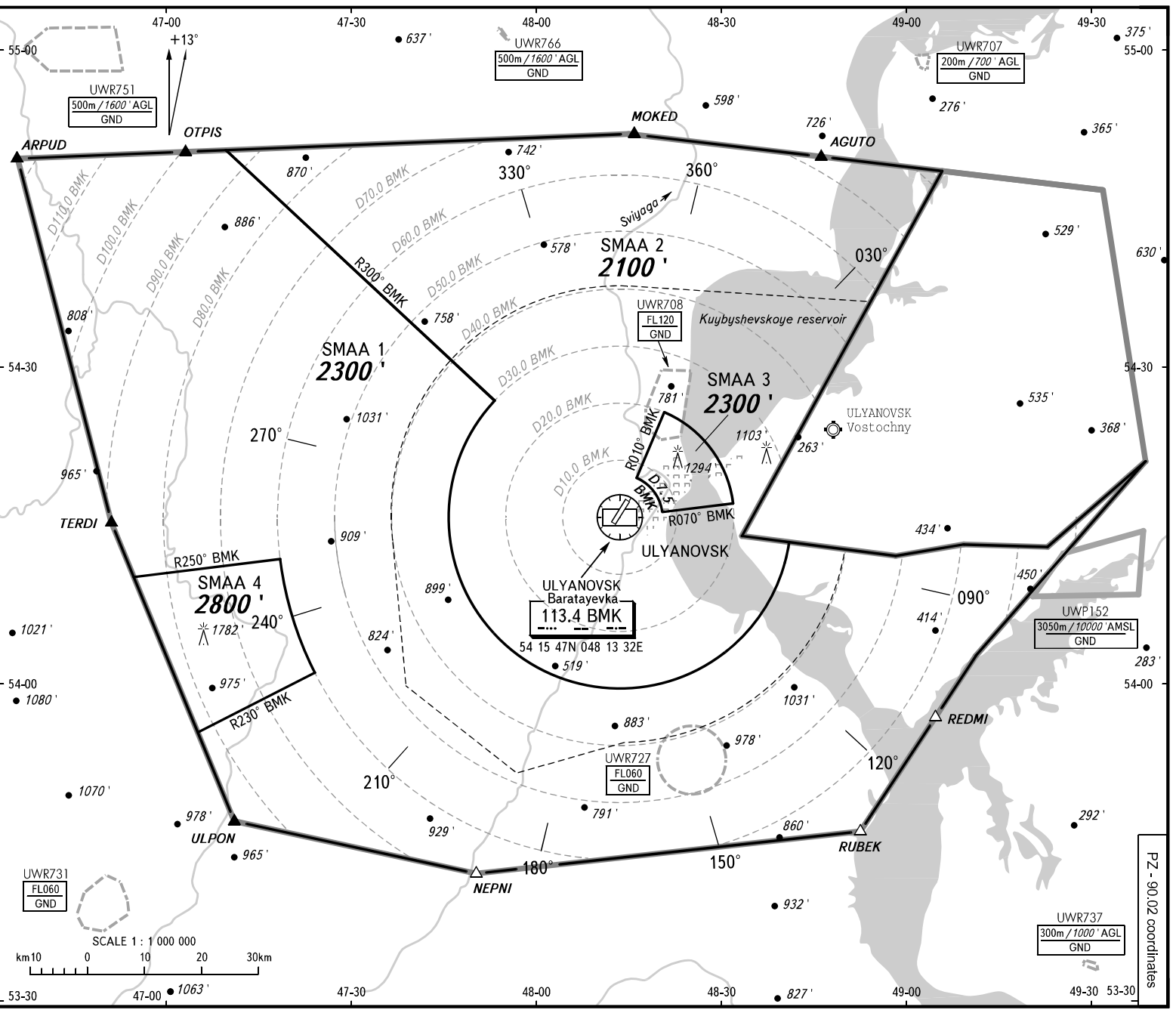


ATC SURVEILLANCE MINIMUM  
ELEV **449 / 137m**  
ALTIITUDE CHART - ICAO  
TRANSITION ALTITUDE: **4000'**  
ULYANOVSK, RUSSIA  
BARATAYEVKA



**CHANGE:** New chart

Federal Air Transport Agency

APPROACH  
RADAR  
START

**127.300**  
**120.800**  
**120.400**

BEARINGS AND TRACKS ARE MAGNETIC  
ALTITUDES AND ELEVATIONS IN FEET  
DISTANCES IN KILOMETRES

Alt set: -QNH(QFE on req.);  
-hPa(mm on req).

**WARNING:**

- The chart may only be used for cross-checking of altitudes assigned while the aircraft is identified under radar control.
- TEMPERATURE CORRECTION:  
The altitude value of SMAA is calculated for ISA conditions (15° C). When vectoring is executed at a temperature of 0° C or below, the minimum vectoring altitudes must be corrected by altimeter temperature correction.
- COMMUNICATION FAILURE: As in accordance with the procedures described in AIP.
- The coordinates of SMAA are on the reverse of this page.

SCALE 1 : 1 000 000  
km 10 0 10 20 30km

UWR731  
FL060  
GND

**ULYANOVSK, RUSSIA  
BARATAYEVKA**

SURVEILLANCE MINIMUM ALTITUDE AREAS		
IDENT	MNM ALT	LATERAL LIMITS (PZ-90.02 coordinates)
SMAA 1	2300'	545010.6N 0470903.1E, 542646.3N 0475313.7E, then anticlockwise by arc of a circle radius of 30 KM centred at 541546.7N 0481331.8E to 541322.6N 0484050.2E, then along Ulyanovsk/Vostochny TMA boundary to 542034.0N 0493834.0E, then along Ulyanovsk/Baratayevka TMA boundary to 535508.3N 0470558.4E, 540055.7N 0472436.2E, then clockwise by arc of a circle radius of 60 KM centred at 541546.7N 0481331.8E to 541137.6N 0471847.6E, 540942.5N 0465516.4E, then along Ulyanovsk/Baratayevka TMA boundary to 545010.6N 0470903.1E
SMAA 2	2100'	545010.6N 0470903.1E, 542646.3N 0475313.7E, then anticlockwise by arc of a circle radius of 30 KM centred at 541546.7N 0481331.8E to 541322.6N 0484050.2E, then along Ulyanovsk/Vostochny TMA boundary to 544817.9N 0490615.9E, then along Ulyanovsk/Baratayevka TMA boundary to 545010.6N 0470903.1E, excluding SMAA 3 limits
SMAA 3	2300'	541929.9N 0481614.0E, then clockwise by arc of a circle radius of 7.5 KM centred at 541546.7N 0481331.8E to 541616.0N 0482023.2E, 541704.1N 0483149.1E, then anticlockwise by arc of a circle radius of 20 KM centred at 541546.7N 0481331.8E to 542541.9N 0482045.3E, 541929.9N 0481614.0E
SMAA 4	2800'	535508.3N 0470558.4E, 540055.7N 0472436.2E, then clockwise by arc of a circle radius of 60 KM centred at 541546.7N 0481331.8E to 541137.6N 0471847.6E, 540942.5N 0465516.4E, then along Ulyanovsk/Baratayevka TMA boundary to 535508.3N 0470558.4E