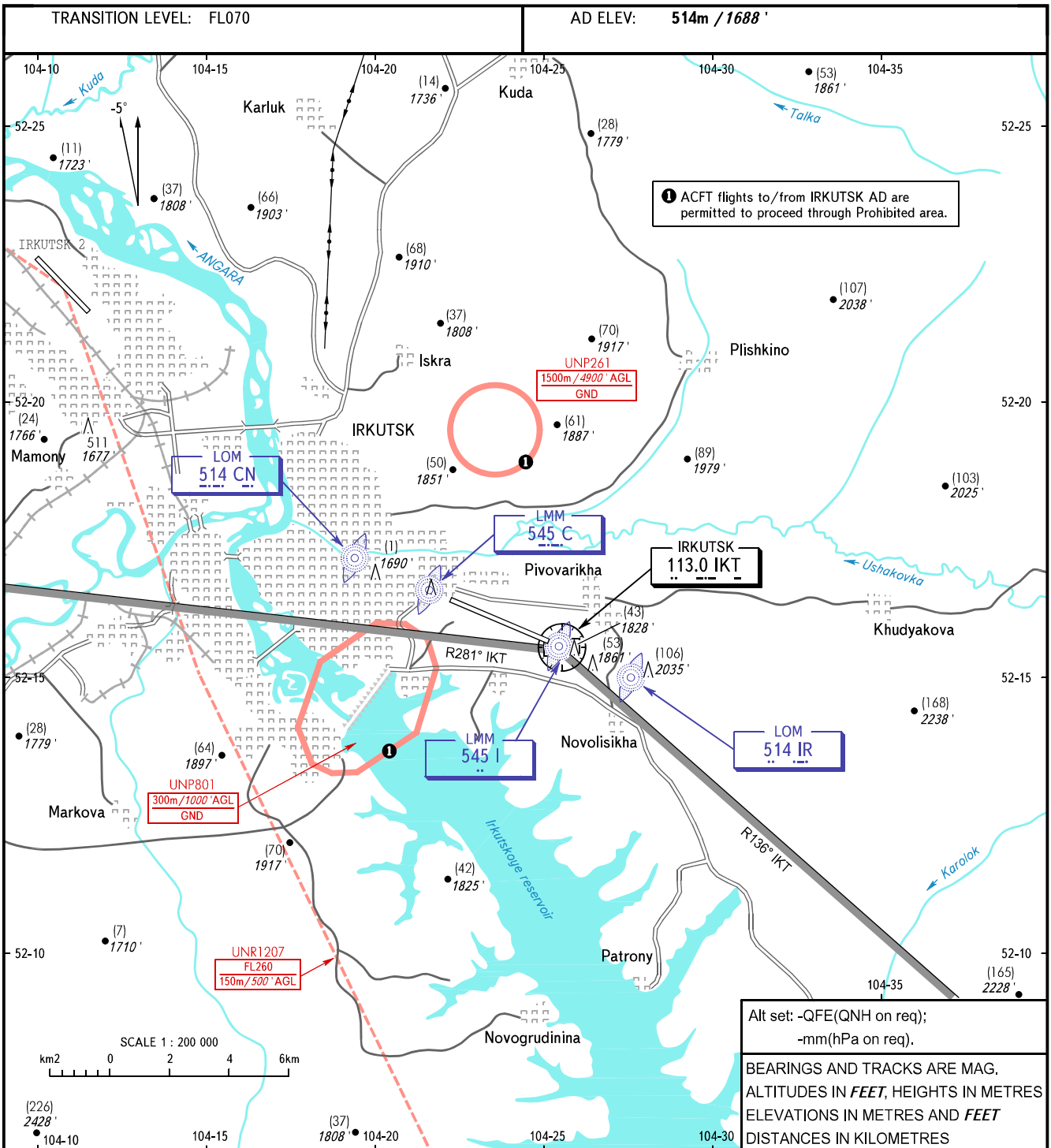


VISUAL  
APPROACH  
CHART - ICAO

RADAR	119.300
TOWER	118.100

IRKUTSK, RUSSIA  
IRKUTSK  
RWY 12/30



**WARNING**  
When UNR1207 is active, chart is AVBL after coordination with ATC.  
ACFT carrying out VFR flights must have MAX IAS not more than 450km/h below FL070.

**VISUAL APPROACH PROCEDURES:**

- Requirements for visual approach operations:
  - the decision to carry out a visual approach shall be taken by a pilot-in-command and coordinated with ATS unit;
  - pilot-in-command maintains a visual contact with RWY and its references;
  - pilot-in-command shall report that meteorological conditions allow to perform visual approach and landing.
- PAPI 3°20' visual approach slope indicator system can be employed.
- If visual contact with RWY and/or its references is lost, pilot-in-command must proceed at the minimum safe IFR height to LMM of the active RWY and execute instrument approach in accordance with the established procedure climbing to (900) / 4640'.
- Visual manoeuvring south of the sector limited by DVORDME IKT radials 136° and 281° is PROHIBITED.

CHANGE: VAR, UNP801, TR MAG