

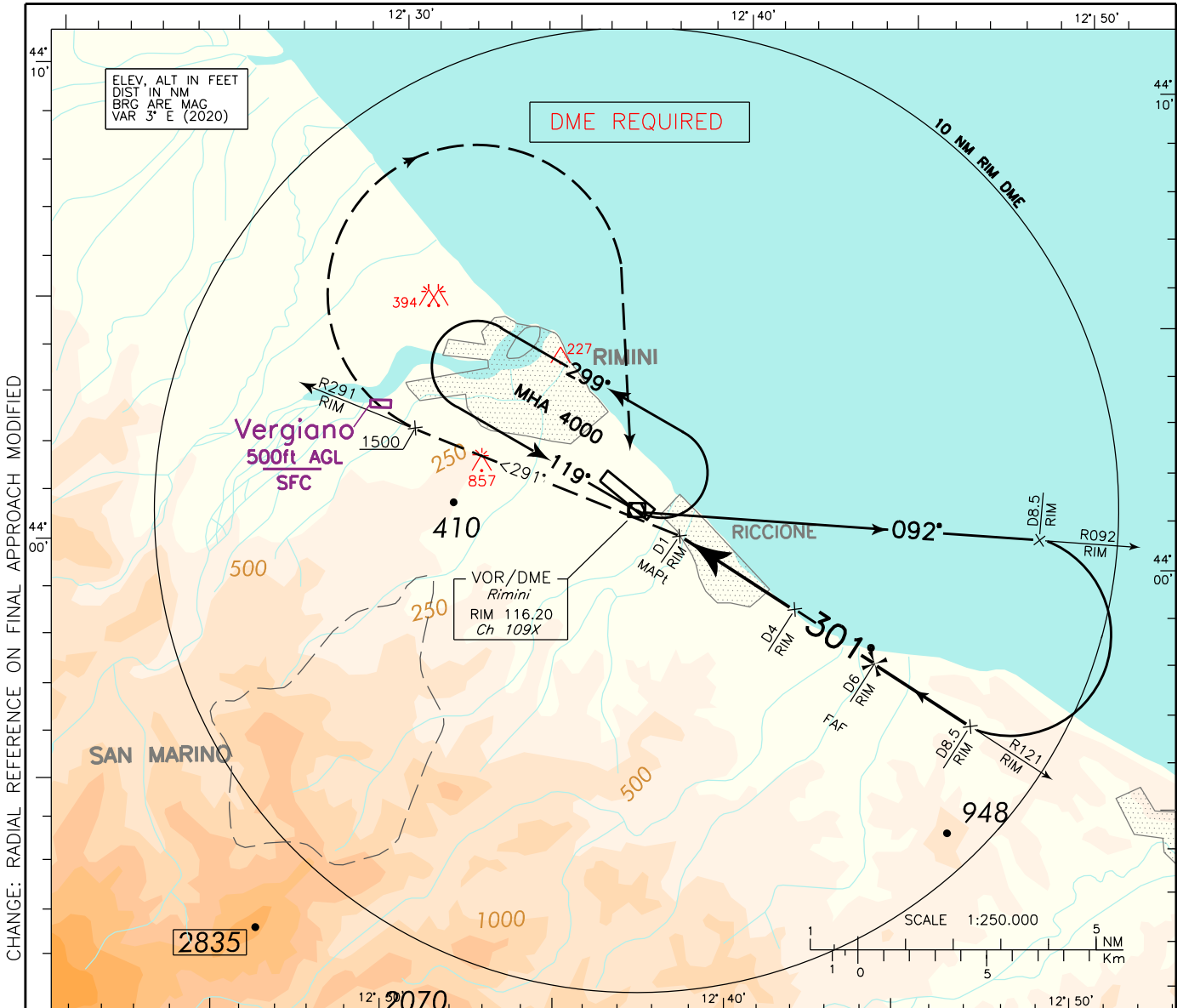
INSTRUMENT APPROACH CHART - ICAO

AERODROME ELEV 41

APP Bologna APP/Radar
TWR Rimini TWR

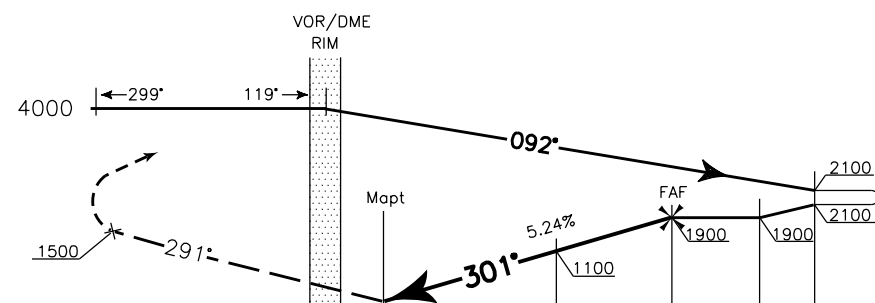
CH 118.150 (133.775)
131.225

RIMINI/Miramare (LIPR)
VOR-Z RWY 30 (CAT. C-D)



CHANGE: RADIAL REFERENCE ON FINAL APPROACH MODIFIED

TRANSITION ALT 6000
MISSED APPROACH: At D1 RIM DME climb to 4000 FT and, as soon as practicable, turn left to join RDL 291 RIM VOR. Passing 1500 FT turn right to RIM VOR/DME holding pattern to reach at 4000 FT.



RIM DME (NM)	D0	D1	D2	D3	D4	D5	D6	D7	D7.5	D8	D8.5	D9	D10
THR 30 (NM)	0	1	2	3	4	5	6	7	8	9	10	11	

STRAIGHT IN APPROACH	OCA (OCH)	A	B	C	D
	VORDME			680 (639)	
CIRCLING				1260 (1219)	

REMARK:
Circling procedure allowed East of RWY only.

NOT ALLOWED

GS	FT PER MIN	RIM DME	ALT (HGT)
110	584	D 6	1900(1859)
130	690	D 5	1590(1549)
150	797	D 4	1270(1229)
170	903	D 3	960 (919)
190	1009		
210	1115		
230	1221		

