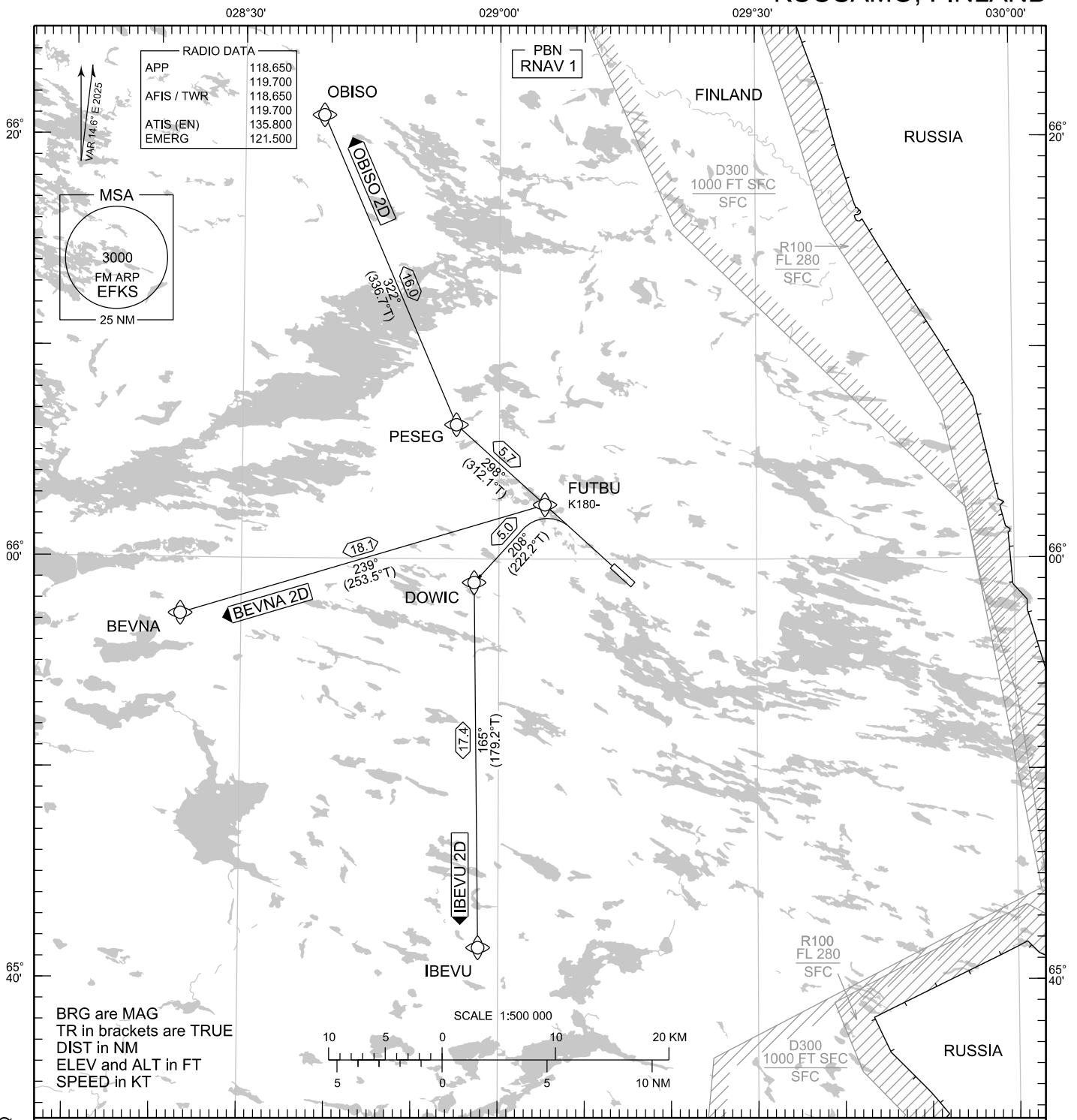


STANDARD DEPARTURE CHART
INSTRUMENT (SID) - ICAO

TRANSITION ALT
5000

RNAV^(GNSS) SID RWY 30
KUUSAMO AERODROME
KUUSAMO, FINLAND



RNAV SID RWY 30

BEVNA 2D IBEVU 2D OBISO 2D

DME/DME OPS: NOT SUPPORTED

ROUTES: RNAV PROC CODING ON THE VERSO OF THE CHART

SQUAWK: WHEN LINING UP SQUAWK THE ASSIGNED CODE

INITIAL CLIMB: MNM TURNING ALTITUDE ACCORDING TO RTE CODING.
CLOSE-IN OBSTACLES EXIST, SEE EFKS AD 2.10 - 5

NOISE ABATEMENT: AFTER TAKE-OFF CLIMB AS RAPIDLY AS PRACTICABLE TO AT LEAST 2000 FT ABOVE AD ELEV
PUBLISHED SID ROUTES ARE ALSO MINIMUM NOISE ROUTINGS

AREA MNM ALT: SEE AMA INDEX, AIP ENR 6.1 - 3

CHG: ADDN APP FREQ

EFKS RNAV SID RWY 30										
RTE NAV SPEC	SEQ NR	P/T	WPT		MAG	GEO TR	DIST NM	Turn Direction	Constraints	
			ID	Flyover					LVL	Speed
BEVNA 2D RNAV 1	010	CA	-	-	298°	312.6°T	-		A1350+	
	020	DF	FUTBU	-	-	-	-			K180-
	030	TF	BEVNA	-	239°	253.5°T	18.1			
IBEVU 2D RNAV 1	010	CA	-	-	298°	312.6°T	-		A1350+	
	020	DF	FUTBU	-	-	-	-			K180-
	030	TF	DOWIC	-	208°	222.2°T	5.0	L		
	040	TF	IBEVU	-	165°	179.2°T	17.4			
OBISO 2D RNAV 1	010	CA	-	-	298°	312.6°T	-		A1350+	
	020	DF	FUTBU	-	-	-	-			K180-
	030	TF	PESEG	-	298°	312.1°T	5.7			
	040	TF	OBISO	-	322°	336.7°T	16.0			

WPT COORD	
SEE PAGE EFKS AD 2.15 - 1	