

AIP
GREECE

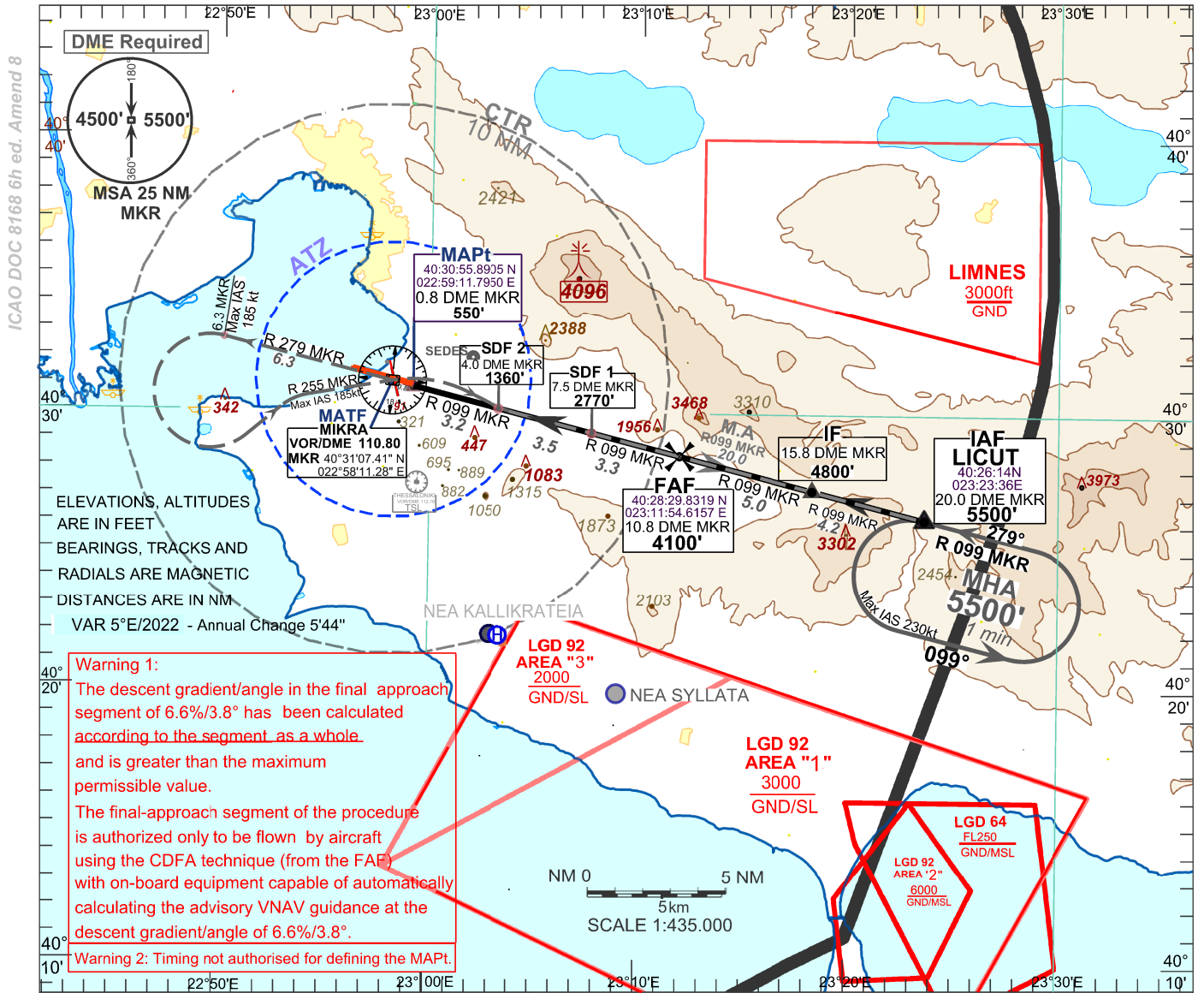
AD 2-LGTS-IAC-15

INSTRUMENT
APPROACH
CHART - ICAO

AD ELEV. 22 (ft)
OCH RELATED TO
AD ELEVATION

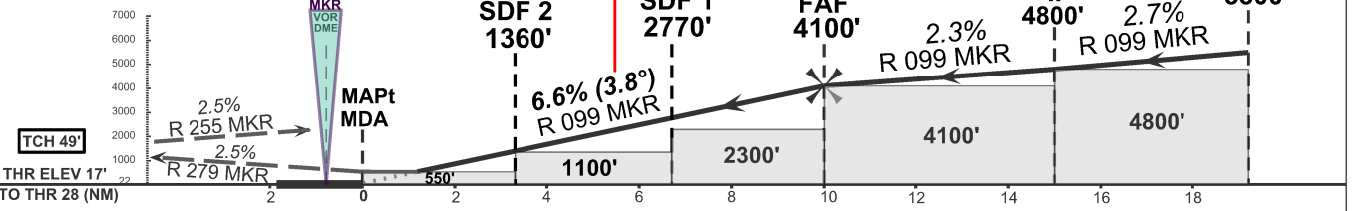
ATIS 127.555 MAKEDONIA TWR 118.105
THESSALONIKI APP 120.800

THESSALONIKI/ MAKEDONIA
MKR VOR/DME
RWY 28



Missed Approach: Climb to 5500ft. Continue on course to MKR, then establish on R 279 MKR outbound. At 6.3 DME MKR turn left, establish on R 255 MKR inbound to MKR, then establish on R 099 MKR outbound to LICUT and hold. Left turn at 6.3 DME MKR and right turn at MKR limited to 185kt IAS maximum.

TRANSITION ALT 6000ft



Change: TWR-ATIS freq

Approach-Speed Category	A	B	C	D	DME MKR (NM)	10.8	9.8	8.8	7.8	6.8	5.8	4.8	3.8	2.8	1.8
	DIST THR-RWY28 (NM)					10.0	9.0	8.0	7.0	6.0	5.0	4.0	3.0	2.0	1.0
Altitude (ft)	550/528				4100	3697	3293	2890	2486	2083	1680	1276	873	469	
Ground Speed (kt)						80	100	120	140	160	180				
FAF - RWY28 (10.0 NM) (min:sec)						7:31	6:00	5:00	4:18	3:45	3:20				
Rate of descent (403.4ft/NM) (ft/min)						530	670	800	940	1070	1210				