

STANDARD DEPARTURE CHART -INSTRUMENT

RJCK / KUSHIRO

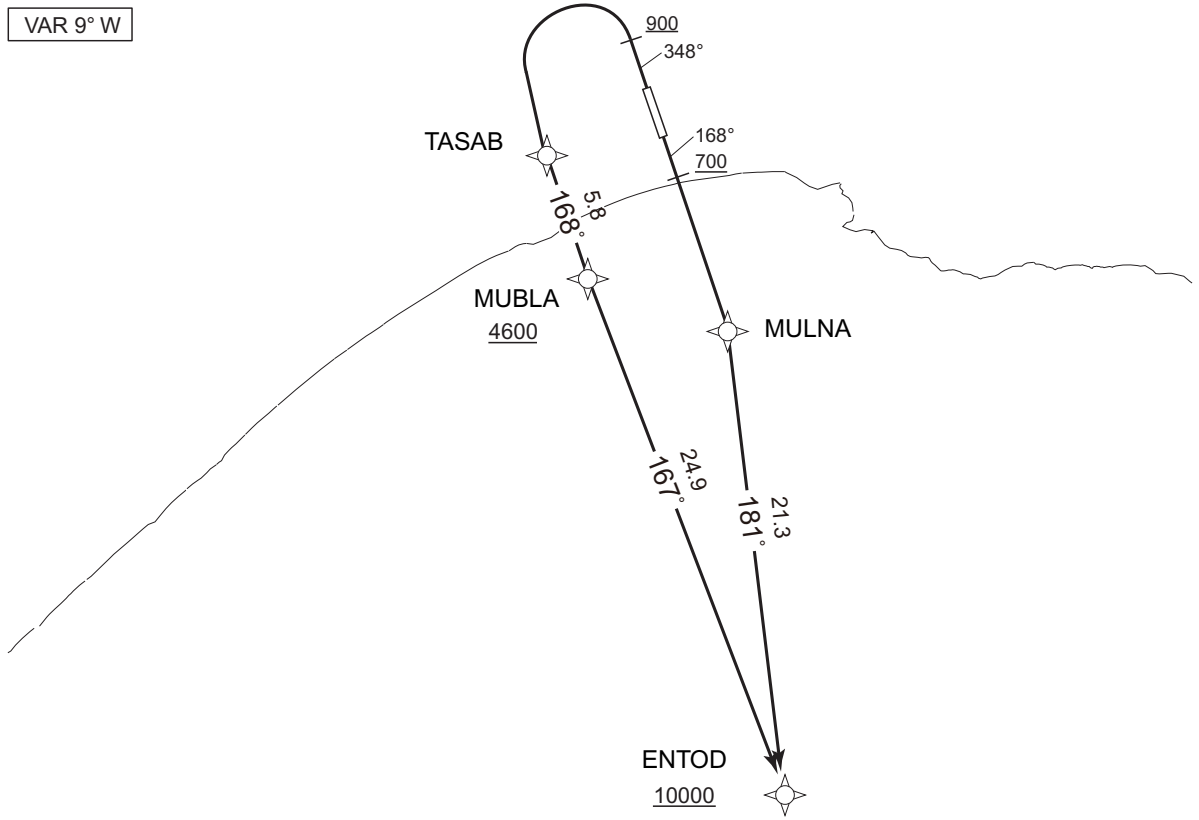
RNAV SID

ENTOD ONE DEPARTURE

RNP1

Note GNSS required.

VAR 9° W



RWY17 : Climb on HDG168° at or above 700FT, direct to MULNA, to ENTOD at or above 10000FT.

RWY35 : Climb on HDG348° at or above 900FT, turn left direct to TASAB, to MUBLA at or above 4600FT, to ENTOD at or above 10000FT.

CHANGE : Description of latitude and longitude.

RWY17

Serial Number	Path Descriptor	Waypoint Identifier	Fly Over	Course °M(°T)	Magnetic Variation	Distance (NM)	Turn Direction	Altitude (FT)	Speed (KIAS)	Vertical Angle	Navigation Specification
001	VA	-	-	168 (159.0)	-9.3	-	-	+700	-	-	RNP1
002	DF	MULNA	-	-	-9.3	-	-	-	-	-	RNP1
003	TF	ENTOD	-	181 (171.4)	-9.3	21.3	-	+10000	-	-	RNP1

RWY35

Serial Number	Path Descriptor	Waypoint Identifier	Fly Over	Course °M(°T)	Magnetic Variation	Distance (NM)	Turn Direction	Altitude (FT)	Speed (KIAS)	Vertical Angle	Navigation Specification
001	VA	-	-	348 (339.0)	-9.3	-	-	+900	-	-	RNP1
002	DF	TASAB	-	-	-9.3	-	L	-	-	-	RNP1
003	TF	MUBLA	-	168 (159.0)	-9.3	5.8	-	+4600	-	-	RNP1
004	TF	ENTOD	-	167 (157.5)	-9.3	24.9	-	+10000	-	-	RNP1

STANDARD DEPARTURE CHART -INSTRUMENT

RJCK / KUSHIRO

RNAV SID

Waypoint Coordinates

Waypoint Identifier	Coordinates
MULNA	425251.7N / 1441636.0E
TASAB	430015.6N / 1440508.3E
MUBLA	425452.9N / 1440757.8E
ENTOD	423150.2N / 1442054.3E

CHANGE : Waypoint Coordinates added.