

STANDARD DEPARTURE CHART -INSTRUMENT

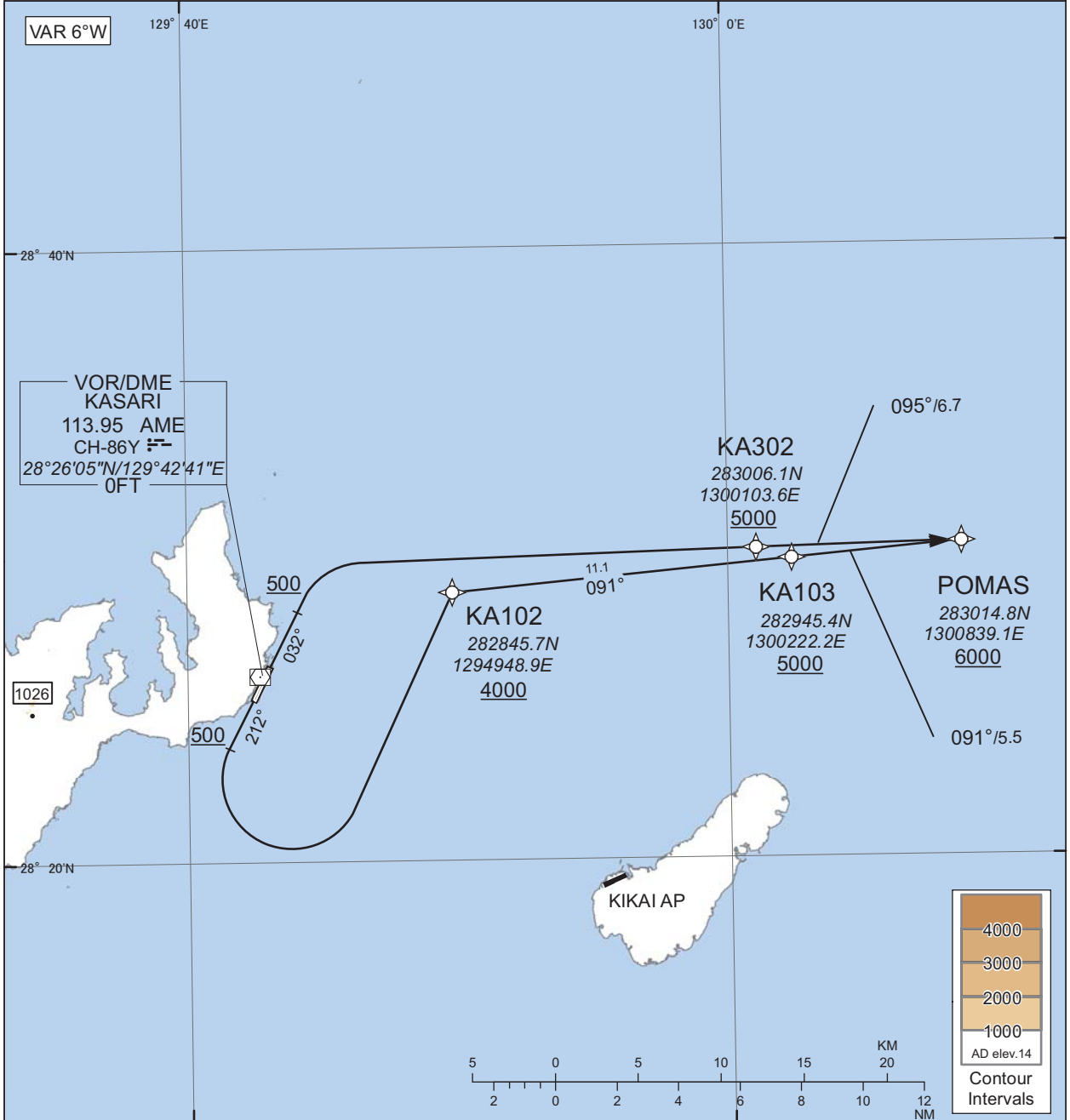
RJKA / AMAMI

RNAV SID

USAGI EAST THREE DEPARTURE

RNP1

Note GNSS required.



CHANGE : Navigation Specification(Basic RNP1 → RNP1).

RWY03 : Climb on HDG032° at or above 500FT, turn right direct to KA302 at or above 5000FT, to POMAS at or above 6000FT.

RWY21 : Climb on HDG212° at or above 500FT, turn left direct to KA102 at or above 4000FT, to KA103 at or above 5000FT, to POMAS at or above 6000FT.

Note RWY03 : 3.5% climb gradient required up to 500FT.
OBST ALT 197FT located at 1.1NM 015° FM end of RWY03.
RWY21 : 5.0% climb gradient required up to 500FT.

STANDARD DEPARTURE CHART -INSTRUMENT

RJKA / AMAMI

RNAV SID

USAGI EAST THREE DEPARTURE

RWY03

Serial Number	Path Descriptor	Waypoint Identifier	Fly Over	Course °M(°T)	Magnetic Variation	Distance (NM)	Turn Direction	Altitude (FT)	Speed (KIAS)	Vertical Angle	Navigation Specification
001	VA	-	-	032 (025.8)	-6.4	-	-	+500	-	-	RNP1
002	DF	KA302	-	-	-6.4	-	R	+5000	-	-	RNP1
003	TF	POMAS	-	095 (088.7)	-6.4	6.7	-	+6000	-	-	RNP1

RWY21

Serial Number	Path Descriptor	Waypoint Identifier	Fly Over	Course °M(°T)	Magnetic Variation	Distance (NM)	Turn Direction	Altitude (FT)	Speed (KIAS)	Vertical Angle	Navigation Specification
001	VA	-	-	212 (205.8)	-6.4	-	-	+500	-	-	RNP1
002	DF	KA102	-	-	-6.4	-	L	+4000	-	-	RNP1
003	TF	KA103	-	091 (084.8)	-6.4	11.1	-	+5000	-	-	RNP1
004	TF	POMAS	-	091 (084.9)	-6.4	5.5	-	+6000	-	-	RNP1

CHANGE : Navigation Specification(Basic RNP1 → RNP1).