

STANDARD ARRIVAL CHART-INSTRUMENT

RJCC / NEW CHITOSE

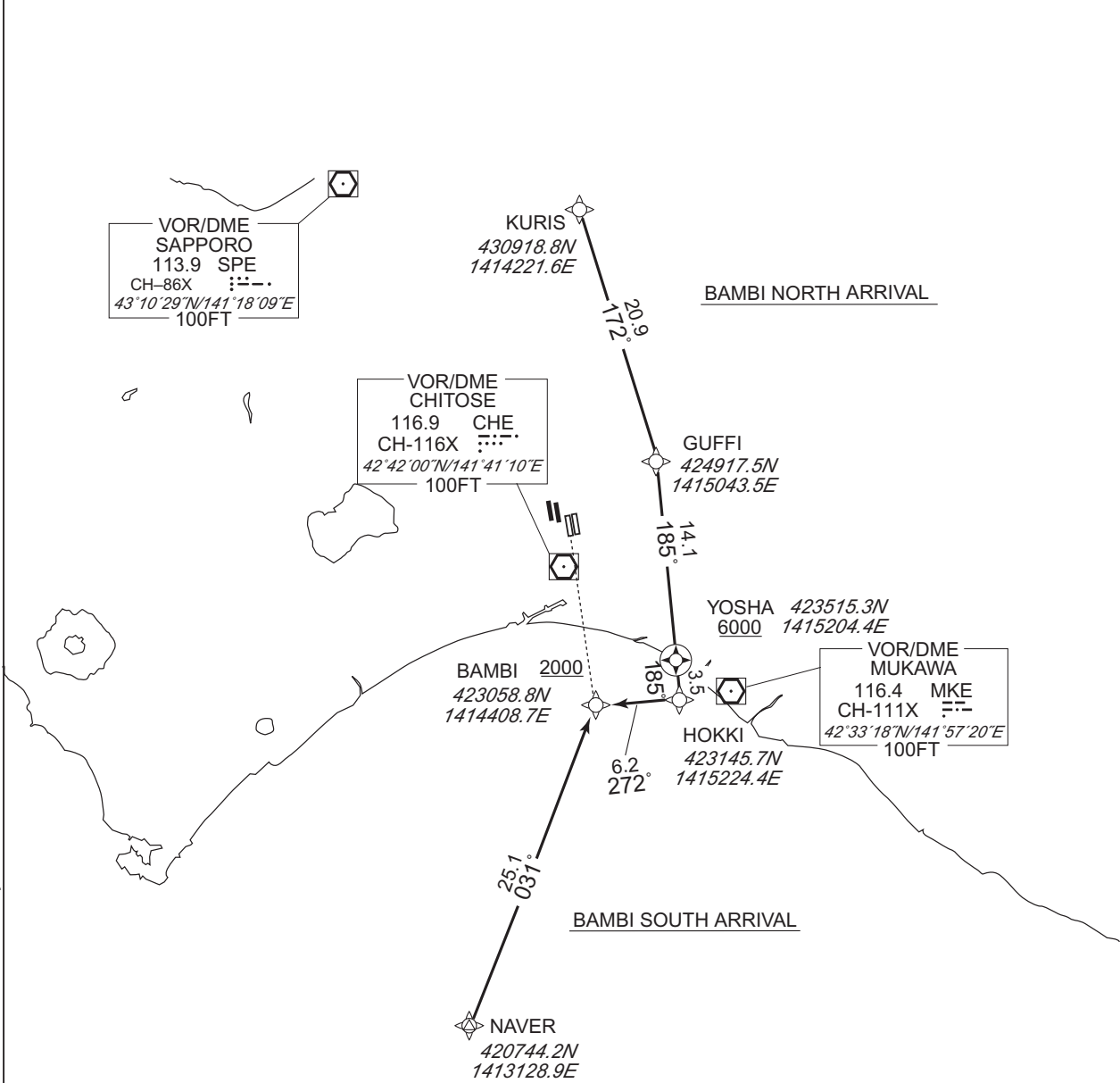
RNAV STAR RWY01L

BAMBI SOUTH ARRIVAL  
BAMBI NORTH ARRIVAL

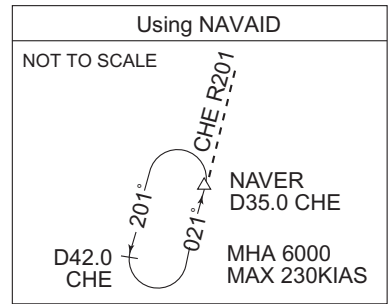
RNAV 1

Note 1 ) DME/DME/IRU or GNSS required.  
2 ) RADAR service required.

VAR 9° W



CHANGE : Description of VAR and HLDG pattern.



STANDARD ARRIVAL CHART-INSTRUMENT

RJCC / NEW CHITOSE

RNAV STAR RWY01L

BAMBI SOUTH ARRIVAL

From NAVER, to BAMBI at or above 2000FT.

Critical DME	CHE, MKE : 19.0NM to BAMBI - BAMBI
DME GAP	NAVER - 19.0NM to BAMBI
Inappropriate Nav aids	See AD1.1.6.10.3. Inappropriate NAVAIDs for RNAV1

Serial Number	Path Descriptor	Waypoint Identifier	Fly Over	Course °M(°T)	Magnetic Variation	Distance (NM)	Turn Direction	Altitude (FT)	Speed (KIAS)	Vertical Angle	Navigation Specification
001	IF	NAVER	—	—	-9.3	—	—	—	—	—	RNAV1
002	TF	BAMBI	—	031 (022.0)	-9.3	25.1	—	+2000	—	—	RNAV1

BAMBI NORTH ARRIVAL

From KURIS, to GUFFI, to YOSHA at or above 6000FT, to HOKKI, to BAMBI at or above 2000FT.

Critical DME	SPE : KURIS - 10.0NM to GUFFI CHE : 13.0NM to YOSHA - 3.0NM to YOSHA HOKKI - BAMBI MKE : HOKKI - BAMBI
DME GAP	3.0NM to YOSHA - HOKKI
Inappropriate Nav aids	See AD1.1.6.10.3. Inappropriate NAVAIDs for RNAV1

Serial Number	Path Descriptor	Waypoint Identifier	Fly Over	Course °M(°T)	Magnetic Variation	Distance (NM)	Turn Direction	Altitude (FT)	Speed (KIAS)	Vertical Angle	Navigation Specification
001	IF	KURIS	—	—	-9.3	—	—	—	—	—	RNAV1
002	TF	GUFFI	—	172 (162.9)	-9.3	20.9	—	—	—	—	RNAV1
003	TF	YOSHA	Y	185 (175.9)	-9.3	14.1	—	+6000	—	—	RNAV1
004	TF	HOKKI	—	185 (175.9)	-9.3	3.5	—	—	—	—	RNAV1
005	TF	BAMBI	—	272 (262.8)	-9.3	6.2	—	+2000	—	—	RNAV1