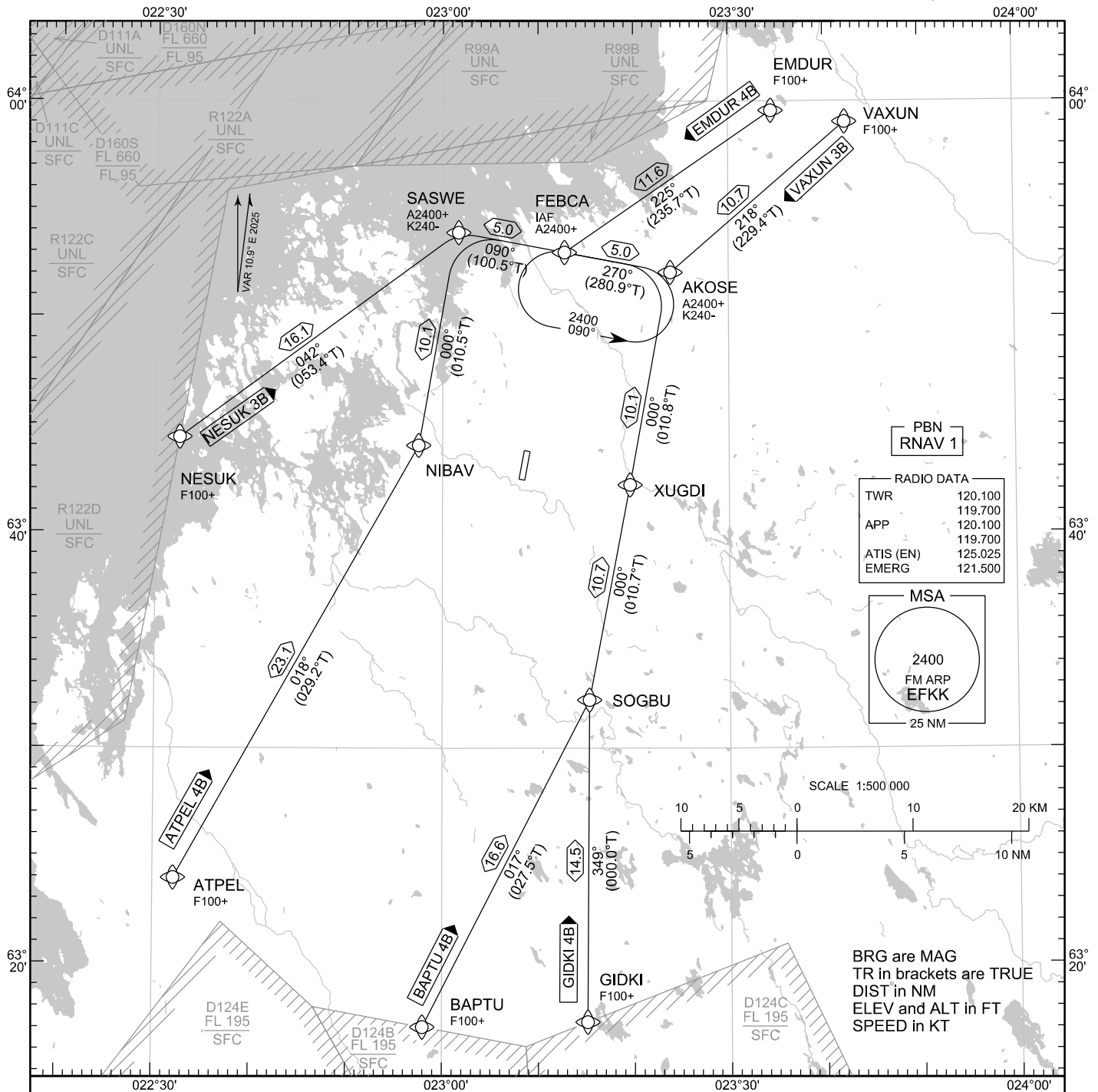


TRANSITION ALT
5000

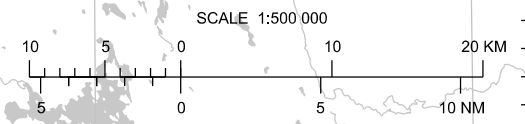


PBN
RNAV 1

RADIO DATA	
TWR	120.100
APP	120.100
ATIS (EN)	125.025
EMERG	121.500

MSA

2400
FM ARP
EFFF
25 NM



BRG are MAG
TR in brackets are TRUE
DIST in NM
ELEV and ALT in FT
SPEED in KT

RNAV STAR RWY 19
ATPEL 4B BAPTU 4B EMDUR 4B GIDKI 4B NESUK 3B VAXUN 3B

- DME/DME OPS: NOT SUPPORTED AREA MNM ALT: SEE AMA INDEX, AIP ENR 6.1 - 3
- ROUTES: RNAV PROC CODING ON THE VERSO OF THE CHART
ATC WILL GIVE DESCENT CLEARANCES
- WPT CONSTRAINTS: ALT / FL / SPEED CONSTRAINTS MUST ALWAYS BE FOLLOWED AS PUBLISHED UNLESS EXPLICITLY CANCELLED BY ATC
- CD OPS: BY ATC CLR IF TFC PERMITS. PLAN CD PATH ACCORDING TO STAR
- RCF: SELECT TRANSPONDER CODE 7600
- RNAV STAR HAS BEEN GIVEN AND ACKNOWLEDGED: FOLLOW THE STAR TO THE RESPECTIVE RWY AND EXECUTE IAP AND LAND

CHG: RTE VAXUN

EFKK RNAV STAR RWY 19										
RTE NAV SPEC	SEQ NR	P/T	WPT		MAG	GEO TR	DIST NM	Constraints		
			ID	Flyover				LVL	LVL	Speed
ATPEL 4B RNAV 1	010	IF	ATPEL	-	-	-	-	F100+		
	020	TF	NIBAV	-	018°	029.2°T	23.1			
	030	TF	SASWE	-	000°	010.5°T	10.1	A2400+		K240-
	040	TF	FEBCA	-	090°	100.5°T	5.0	A2400+		

BAPTU 4B RNAV 1	010	IF	BAPTU	-	-	-	-	F100+		
	020	TF	SOGBU	-	017°	027.5°T	16.6			
	030	TF	XUGDI	-	000°	010.7°T	10.7			
	040	TF	AKOSE	-	000°	010.8°T	10.1	A2400+		K240-
	050	TF	FEBCA	-	270°	280.9°T	5.0	A2400+		

EMDUR 4B RNAV 1	010	IF	EMDUR	-	-	-	-	F100+		
	020	TF	FEBCA	-	225°	235.7°T	11.6	A2400+		

GIDKI 4B RNAV 1	010	IF	GIDKI	-	-	-	-	F100+		
	020	TF	SOGBU	-	349°	000.0°T	14.5			
	030	TF	XUGDI	-	000°	010.7°T	10.7			
	040	TF	AKOSE	-	000°	010.8°T	10.1	A2400+		K240-
	050	TF	FEBCA	-	270°	280.9°T	5.0	A2400+		

NESUK 3B RNAV 1	010	IF	NESUK	-	-	-	-	F100+		
	020	TF	SASWE	-	042°	053.4°T	16.1	A2400+		K240-
	030	TF	FEBCA	-	090°	100.5°T	5.0	A2400+		

VAXUN 3B RNAV 1	010	IF	VAXUN	-	-	-	-	F100+		
	020	TF	AKOSE	-	218°	229.4°T	10.7	A2400+		K240-
	030	TF	FEBCA	-	270°	280.9°T	5.0	A2400+		

RNAV Holdings							
ID	INBD TR	INBD MAG	Turn Direction	Speed	MNM HLDG LVL	TIME	DIST NM
FEBCA	280.9°T	270°	Left	K230-	A2400	1 MIN	-

WPT COORD
SEE PAGE EFKK AD 2.15 - 1