

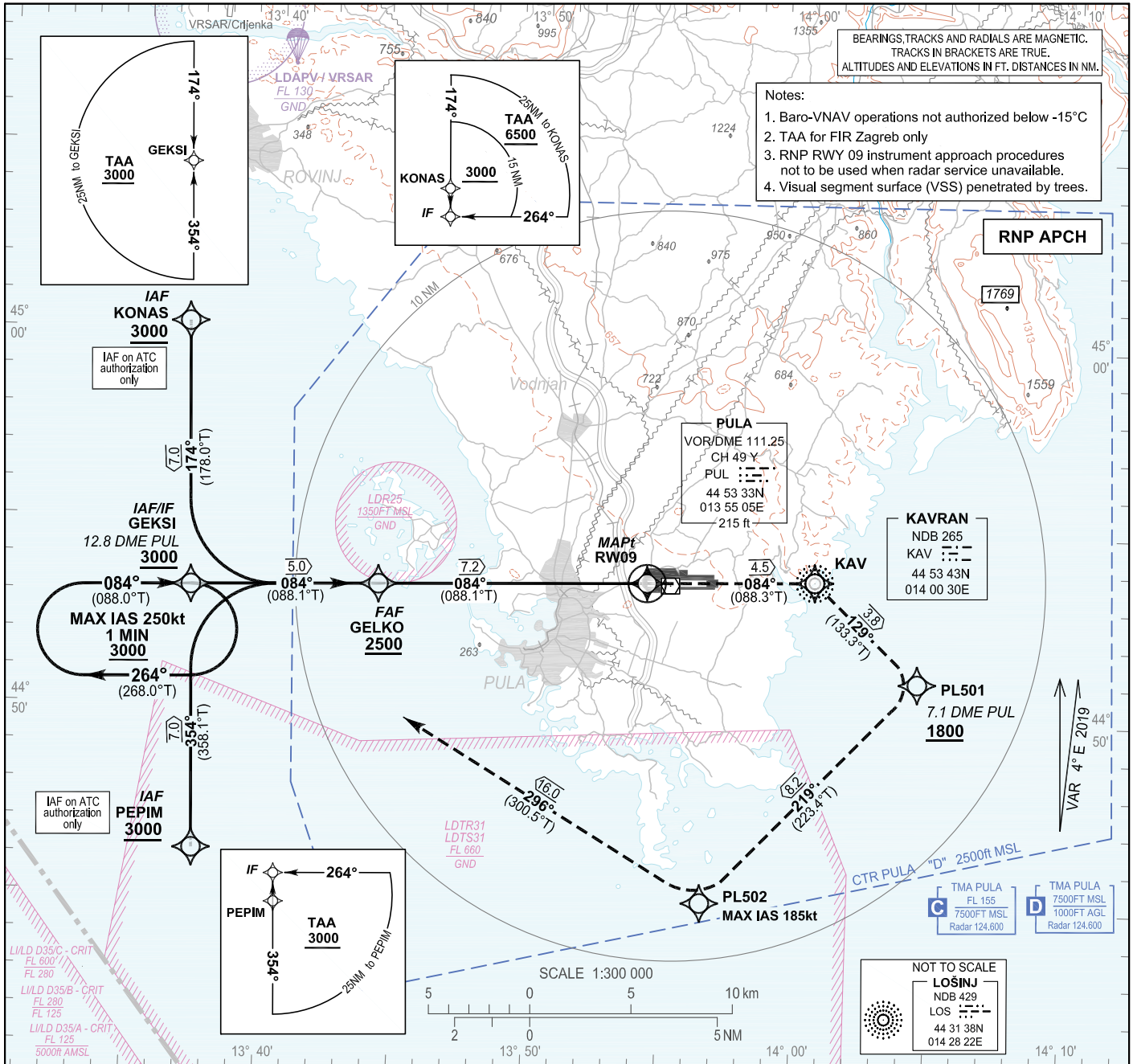
INSTRUMENT APPROACH
CHART-ICAO

AD ELEV 275
HEIGHTS RELATED
TO THR 09 ELEV 168

SBAS
CH: 87881
E09A

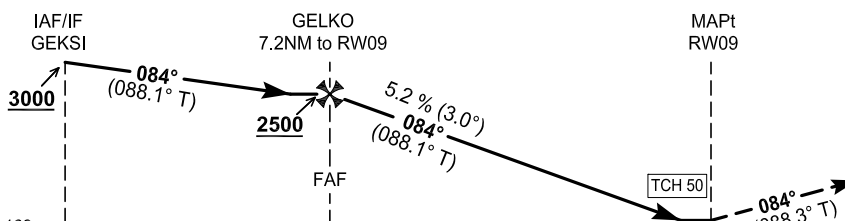
PULA ATIS 129.150
PULA RADAR 127.675
124.600
PULA TOWER 132.000

PULA / PuLa (LDPL)
RNP RWY 09



TRANSITION ALT 10 000

MISSED APPROACH



RNAV
RW09 - KAV [R] - PL501 [A1800+; R] - PL502 [R; -K185] - GEKSI [A3000]

NON RNAV
Climb straight ahead to KAV NDB. At KAV NDB turn RIGHT to intercept and follow QDR 129° KAV. At 7.1 DME PUL turn RIGHT on track 219°. Intercept QDR 297° LOS to GEKSI climbing to 3000 and hold. MAX IAS 185kt until crossing PL502.

THR ELEV 168

NM from THR 09

OCA(H)		A	B	C	D
Straight-in approach	LNAV	640 (472)			
	LNAV/VNAV	540 (372)	550 (382)	560 (392)	570 (402)
	LPV	480 (312)	490 (322)	500 (332)	510 (342)
Circling		890 (620)	950 (680)	1110 (840)	1190 (920)

DIST THR / RW09	NM	7	6	5	4	3	2	1
Altitude	ft	2450	2130	1810	1490	1170	850	540

Timing not authorized for defining the MAPt

GS	kt	80	100	120	140	160	180
GELKO - RW09 (7.2NM)	min:sec	5:23	4:18	3:35	3:04	2:41	2:23
Rate of descent (5.2%)	ft/min	425	531	637	743	849	955

CHANGE: LDTR17, LDTR18 and LDTR19 areas withdrawn; New LDTR31 and LDTR31 areas added.

PULA / Pula (LDPL)

RNP RWY 09

Coding elements for FAS Data Block

Input data

Operation Type	0
SBAS Provider	1 (EGNOS)
Airport Identifier	LDPL
Runway	09
Runway Letter	0 (None)
Approach Performance Designator	0
Route Indicator	
Reference Path Data Selector	0
Reference Path Identifier	E09A
LTP/FTP Latitude	445335.2700N
LTP/FTP Longitude	0135412.6710E
LTP/FTP Ellipsoidal Height (metres)	94.5
FPAP Latitude	445338.1600N
Delta FPAP Latitude (seconds)	2.8900
FPAP Longitude	0135626.8550E
Delta FPAP Longitude (seconds)	134.1840
Threshold Crossing Height	50.0
TCH Units Selector	0 (feet)
Glidepath Angle (degrees)	3.00
Course Width (metres)	105.00
Length Offset (metres)	0
HAL (metres)	40.0
VAL (metres)	50.0

Output data

Data Block	10 0C 10 04 0C 09 00 00 01 39 30 05 4C 1B 44 13 7E 7C F7 05 B1 17 94 16 00 50 18 04 F4 01 2C 01 64 00 C8 FA 46 87 56 11
Calculated CRC Value	46875611

Required Additional Data

ICAO Code	LD
LTP/FTP Orthometric Height (metres)	51.3

CHANGE: LDTR17, LDTS17, LDTR18 and LDTS18 areas withdrawn; New LDTR31 and LDTS31 areas added.

LDPL RNP RWY09

Proposed tabular description for navigation database coding - APPROACH TRANSITION

Serial Number	Fix	Path descriptor	Waypoint name	Flyover	Course °M (°T)	Magnetic Variation	Distance (NM)	Turn direction	Altitude (ft)	Speed (kt)	VPA/TCH (°/ft)	Remarks	NAV SPEC
010	IAF	IF	PEPIM	-	-	4°E	-	-	+3000	-	-	IAF on ATC authorization only	RNP APCH
020	IF	TF	GEKSI	-	354° (358.1°T)	4°E	7.0	-	+3000	-	-	-	
010	IAF / IF	IF	GEKSI	-	-	4°E	-	-	+3000	-	-	-	RNP APCH
010	IAF	IF	KONAS	-	-	4°E	-	-	+3000	-	-	IAF on ATC authorization only	RNP APCH
020	IF	TF	GEKSI	-	174° (178.0°T)	4°E	7.0	-	+3000	-	-	-	

Proposed tabular description for navigation database coding - FINAL TRANSITION

Serial Number	Fix	Path descriptor	Waypoint name	Flyover	Course °M (°T)	Magnetic Variation	Distance (NM)	Turn direction	Altitude (ft)	Speed (kt)	VPA/TCH (°/ft)	Remarks	NAV SPEC
010	IF	IF	GEKSI	-	-	4°E	-	-	+3000	-	-	-	RNP APCH
020	FAF	TF	GELKO	-	084° (088.1°T)	4°E	5.0	-	+2500	-	-	-	
030	MAPt	TF	RW09	Y	084° (088.1°T)	4°E	7.2	-	-	-	3.0 / 50.0	-	
040	-	TF	KAV	-	084° (088.3°T)	4°E	4.5	-	-	-	-	-	
050	-	TF	PL501	-	129° (133.3°T)	4°E	3.8	-	+1800	-	-	-	
060	-	TF	PL502	-	219° (223.4°T)	4°E	8.2	R	-	-185	-	-	
070	MAHF	TF	GEKSI	-	296° (300.5°T)	4°E	16.0	-	3000	-	-	-	
080	MAHF	HM	GEKSI	-	084° (088.0°T)	4°E	1MIN	R	3000	-250	-	Holding above 3000ft on ATC clearance only	

RNAV HOLDING tabular description

Waypoint name	Path Terminator	Inbound course °M (°T)	Leg time/distance NM	Turn direction	Minimum altitude (ft)	Maximum altitude (ft)	Speed limit MAX IAS (kt)	Magnetic variation	Remarks	NAV SPEC
GEKSI	HM	084° (088.0°T)	1MIN / -	R	3000	-	250	4°E	-	RNAV 1

Waypoint coordinates

Waypoint name	wgs-84 latitude	wgs-84 longitude
KAV	445343.27N	0140029.66E
GEKSI	445311.7N	0133706.9E
GELKO	445321.7N	0134408.5E
KONAS	450012.5N	0133646.7E
PEPIM	444611.0N	0133727.0E
RW09	445335.27N	0135412.67E
PL501	445104.8N	0140425.8E
PL502	444506.5N	0135631.1E

CHANGE: LDTR17, LDTR18 and LDTR19 areas withdrawn; New LDTR31 and LDTR32 areas added.

OVA STRANICA JE NAMJERNO OSTAVLJENA PRAZNA
THIS PAGE INTENTIONALLY LEFT BLANK