

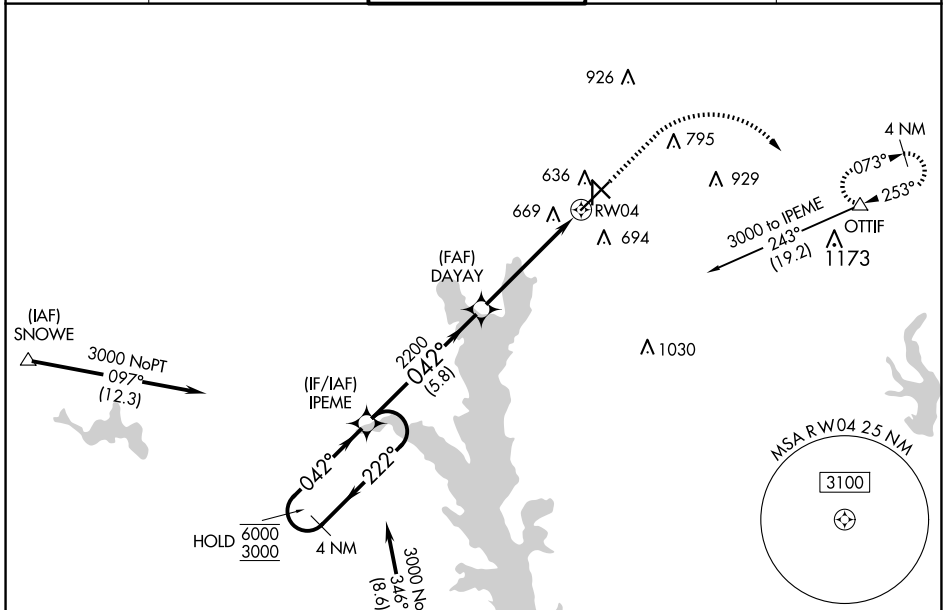
WAAS CH <b>40014</b> <b>W04A</b>	APP CRS <b>042°</b>	Rwy Idg TDZE Apt Elev	<b>7734</b> <b>542</b> <b>544</b>
----------------------------------------	------------------------	-----------------------------	-----------------------------------------

# RNAV (GPS) RWY 4

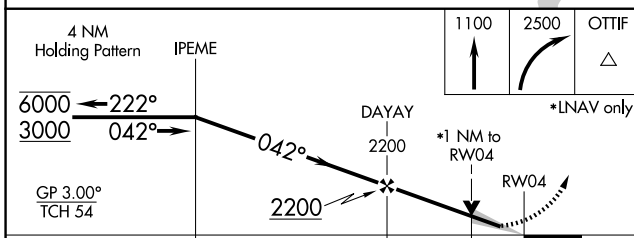
TYLER POUNDS RGNL (TYR)

RNP APCH - GPS.		MALSR	MISSED APPROACH: Climb to 1100 then climbing right turn to 2500 direct OTTIF and hold.
<p><b>⚠</b> For uncompensated Baro-VNAV systems, LNAV/VNAV NA below -7°C or above 54°C. For inop ALS, increase LNAV/VNAV all Cats visibility to 1½ SM, LNAV all Cats visibility to 1 SM.</p>			

ATIS <b>126.25</b>	LONGVIEW APP CON ★ <b>128.75 379.15</b>	POUNDS TOWER ★ <b>120.1 (CTAF) 257.8</b>	GND CON <b>121.9</b>	UNICOM <b>122.95</b>
-----------------------	--------------------------------------------	---------------------------------------------	-------------------------	-------------------------

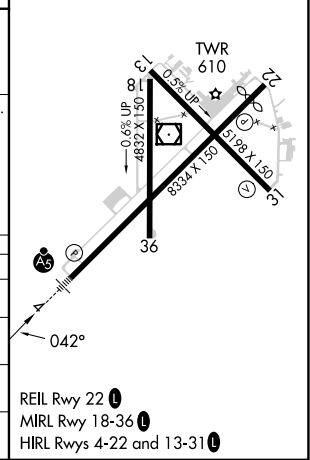


Procedure NA for arrival on FZT VOR/DME airway radials 275 CW 004.



CATEGORY	A	B	C	D
LPV DA		742-½	200 (200-½)	
LNAV/VNAV DA		943-¾	401 (400-¾)	
LNAV MDA	920-½	378 (400-½)	920-⅝	378 (400-⅝)
<b>C</b> CIRCLING	980-1 436 (500-1)	1020-1 476 (500-1)	1160-1¾ 616 (700-1¾)	1280-2¼ 736 (800-2¼)

ELEV 544	<b>D</b> TDZE 542
----------	-------------------



SC-2, 20 MAR 2025 to 17 APR 2025

SC-2, 20 MAR 2025 to 17 APR 2025