

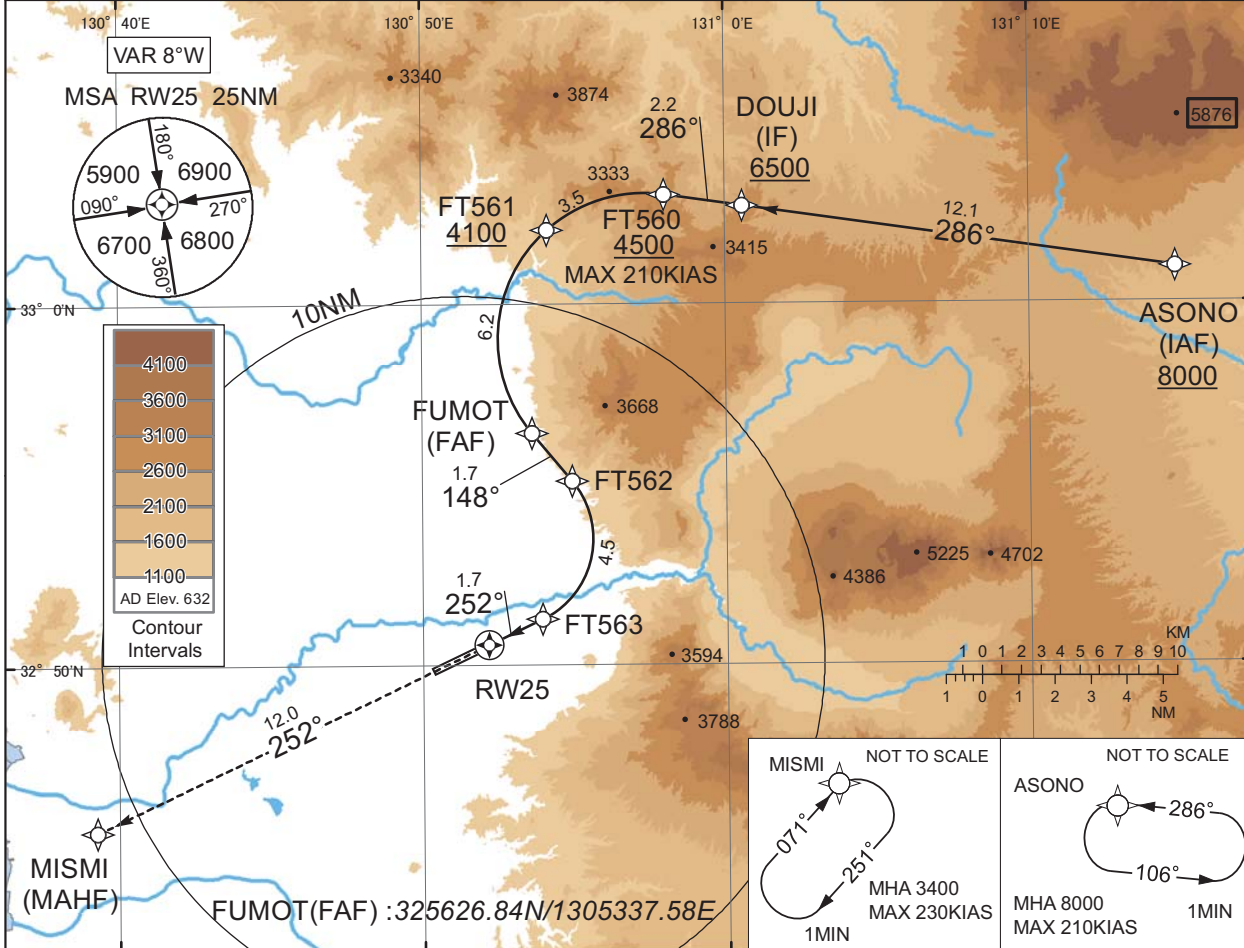
INSTRUMENT APPROACH CHART

RJFT / KUMAMOTO

RNP Y RWY25(AR)

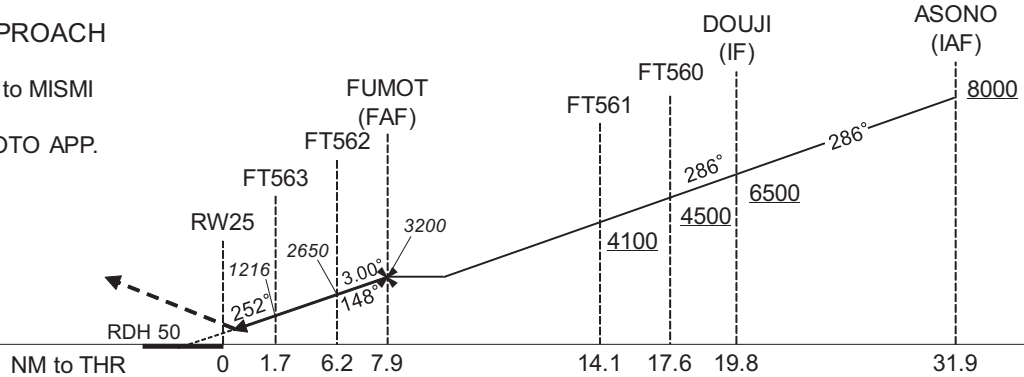
KUMAMOTO APP 127.0 - 126.5 134.0 - 258.9	RNP AR RF required.	KUMAMOTO TWR 118.7 - 126.2 134.0 - 258.9	RADAR AVBL ATIS 128.8
--	------------------------	--	--------------------------

For uncompensated Baro-VNAV systems, procedure not authorized below -4°C / above 45°C



MISSED APPROACH

Climb to 3400FT, to MISMI and hold.
Contact KUMAMOTO APP.



MINIMA	THR elev. 642	AD elev. 632
CAT	RNP 0.30	
	DA(H)	RVR/CMV
A	-	-
B	-	-
C	942(300)	1400
D	-	1600

Authorization Required

INSTRUMENT APPROACH CHART

RJFT / KUMAMOTO

RNP Y RWY25(AR)

Coding Table

Serial Number	Path Descriptor	Waypoint Identifier	Fly Over	Course °M(°T)	Magnetic Variation	Distance (NM)	Turn Direction	Altitude (FT)	Speed (KIAS)	VPA/RDH (°/FT)	RNP Value
001	IF	ASONO	-	-	-7.6	-	-	+8000	-	-	-
002	TF	DOUJI	-	286 (278.4)	-7.6	12.1	-	+6500	-	-	1.0
003	TF	FT560	-	286 (278.3)	-7.6	2.2	-	+4500	-210	-	1.0
004	RF Center: FTRF3 r=4.04NM	FT561	-	-	-7.6	3.5	L	+4100	-	-	1.0
005	RF Center: FTRF3 r=4.04NM	FUMOT	-	-	-7.6	6.2	L	3200	-	-	0.7
006	TF	FT562	-	148 (140.4)	-7.6	1.7	-	2650	-	-3.00	0.3
007	RF Center: FTRF4 r=2.47NM	FT563	-	-	-7.6	4.5	R	1216	-	-3.00	0.3
008	TF	RW25	Y	252 (244.5)	-7.6	1.7	-	692	-	-3.00/50	0.3
009	TF	MISMI	-	252 (244.5)	-7.6	12.0	-	3400	-	-	1.0

Path	Waypoint Identifier	Inbound Course °M(°T)	Magnetic Variation	Outbound Time (MIN)	Turn Direction	Minimum Altitude (FT)	Maximum Altitude (FT)	Speed (KIAS)	RNP Value
Hold	ASONO	286 (278.5)	-7.6	1.0 (-14000)	L	8000	FL140	-210 (-14000)	1.0
Hold	MISMI	071 (063.5)	-7.6	1.0 (-14000)	R	3400	FL140	-230 (-14000)	1.0

Waypoint Coordinates

Waypoint Identifier	Coordinates	RF Arc Center Identifier	Coordinates
ASONO	330058.11N / 1311449.42E	FTRF3	325902.05N / 1305719.25E
DOUJI	330243.56N / 1310035.13E	FTRF4	325331.98N / 1305240.81E
FT560	330302.45N / 1305800.60E		
FT561	330204.49N / 1305408.90E		
FUMOT	325626.84N / 1305337.58E		
FT562	325506.96N / 1305456.29E		
FT563	325117.72N / 1305356.28E		
RW25	325035.24N / 1305210.28E		
MISMI	324524.10N / 1303916.73E		