

STANDARD DEPARTURE CHART - INSTRUMENT

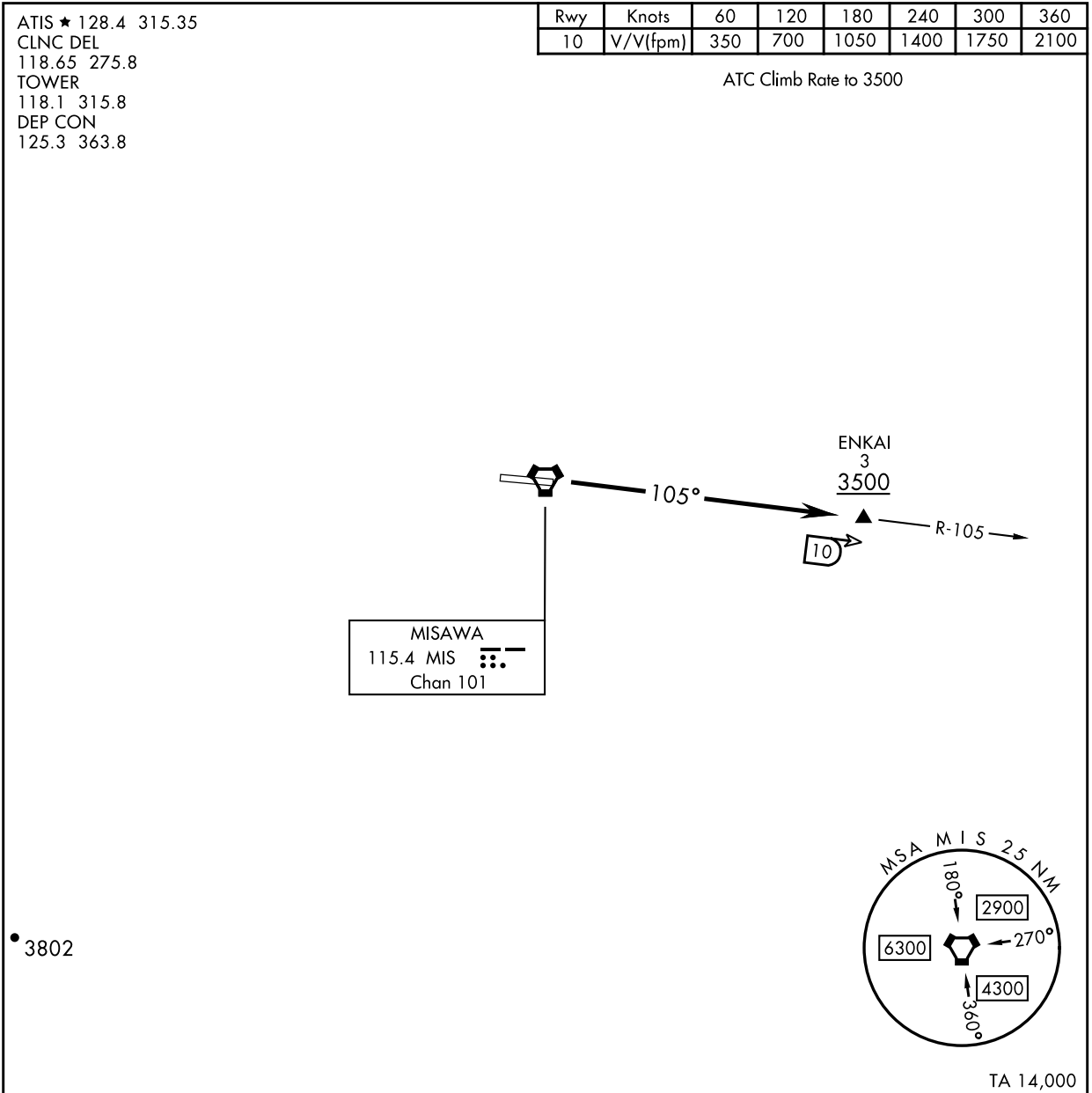
RJSM / MISAWA

ATIS ★ 128.4 315.35
 CLNC DEL
 118.65 275.8
 TOWER
 118.1 315.8
 DEP CON
 125.3 363.8

Rwy	Knots	60	120	180	240	300	360
10	V/V(fpm)	350	700	1050	1400	1750	2100

ENKAI THREE DEPARTURE

ATC Climb Rate to 3500



CHANGE : Update.

DEPARTURE ROUTE DESCRIPTION

TAKEOFF RWY 10: Climb on MIS VORTAC R-105 to ENKAI.
 Cross ENKAI at or above 3500.

NOTE: REPRINTING DOD FLIP

STANDARD DEPARTURE CHART - INSTRUMENT

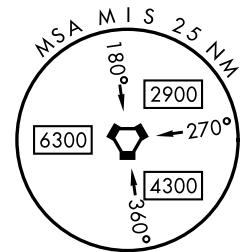
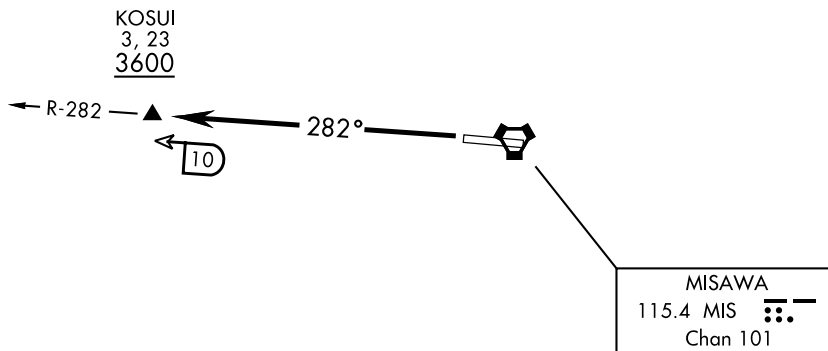
RJSM / MISAWA

KOSUI THREE DEPARTURE

ATIS ★128.4 315.35
CLNC DEL
118.65 275.8
TOWER
118.1 315.8
DEP CON
125.3 363.8

Rwy	Knots	60	120	180	240	300	360
28	V/V(fpm)	406	812	1218	1624	2030	2436

ATC Climb Rate to 3600



TA 14,000



DEPARTURE ROUTE DESCRIPTION

TAKEOFF RWY 28: Climb on MIS VORTAC R-282 to KOSUI.
Cross KOSUI at or above 3600.

CHANGE : Update.

NOTE: REPRINTING DOD FLIP

STANDARD DEPARTURE CHART - INSTRUMENT

RJSM / MISAWA

MISAWA SEVEN DEPARTURE



DEPARTURE ROUTE DESCRIPTION

TAKEOFF RWY 10: Climb heading 103° to 1500 (2000 for JYONA TRANSITION), thence

TAKEOFF RWY 28: Climb heading 283° to 1500 (1000 for JYONA TRANSITION), thence

HANAMAKI TRANSITION:

TAKEOFF RWY 10: ...turn right heading 226° to intercept MIS VORTAC R-196 (HPE VOR/DME R-017) to HANAMAKI VOR/DME. Cross OMBOE at or above 10,000. Maintain ATC assigned altitude.

TAKEOFF RWY 28: ...turn left heading 167° to intercept MIS VORTAC R-196 (HPE VOR/DME R-017) to HANAMAKI VOR/DME. Cross OMBOE at or above 10,000. Maintain ATC assigned altitude.

JYONA TRANSITION:

TAKEOFF RWY 10: ...turn right, climb via MIS VORTAC to intercept MIS R-310 direct JYONA. Cross JYONA at or above 3500. Maintain ATC assigned altitude.

TAKEOFF RWY 28: ...turn right heading 358° to intercept MIS VORTAC R-310 to JYONA. Cross JYONA at or above 3500. Maintain ATC assigned altitude.

MIYAKO TRANSITION:

TAKEOFF RWY 10: ...turn right heading 191° to intercept MIS VORTAC R-161 (MQE VOR/DME R-340) to MIYAKO VOR/DME. Cross SESEA at or above 8000.

Maintain ATC assigned altitude.

TAKEOFF RWY 28: ...turn left heading 131° to intercept MIS VORTAC R-161 (MQE VOR/DME R-340) to MIYAKO VOR/DME. Cross SESEA at or above 8000.

Maintain ATC assigned altitude.

OLSAE TRANSITION:

TAKEOFF RWY 10: ...turn right heading 267° to intercept MIS VORTAC R-233 to OLSAE (MIS R-233/40 DME). Cross OLSAE at or above 9000. Maintain ATC assigned altitude.

TAKEOFF RWY 28: ...turn left heading 203° to intercept MIS VORTAC R-233 to OLSAE (MIS R-233/40 DME). Cross OLSAE at or above 9000. Maintain ATC assigned altitude.

SAMBO TRANSITION:

TAKEOFF RWY 10: ...turn right heading 257° to intercept MIS VORTAC R-221 to SAMBO (MIS R-221/36.7 DME). Cross SAMBO at or above 13,000. Maintain ATC assigned altitude.

TAKEOFF RWY 28: ...turn left heading 189° to intercept MIS VORTAC R-221 to SAMBO (MIS R-221/36.7 DME). Cross SAMBO at or above 13,000. Maintain ATC assigned altitude.

CHANGE : Update.

NOTE: REPRINTING DOD FLIP

STANDARD DEPARTURE CHART - INSTRUMENT

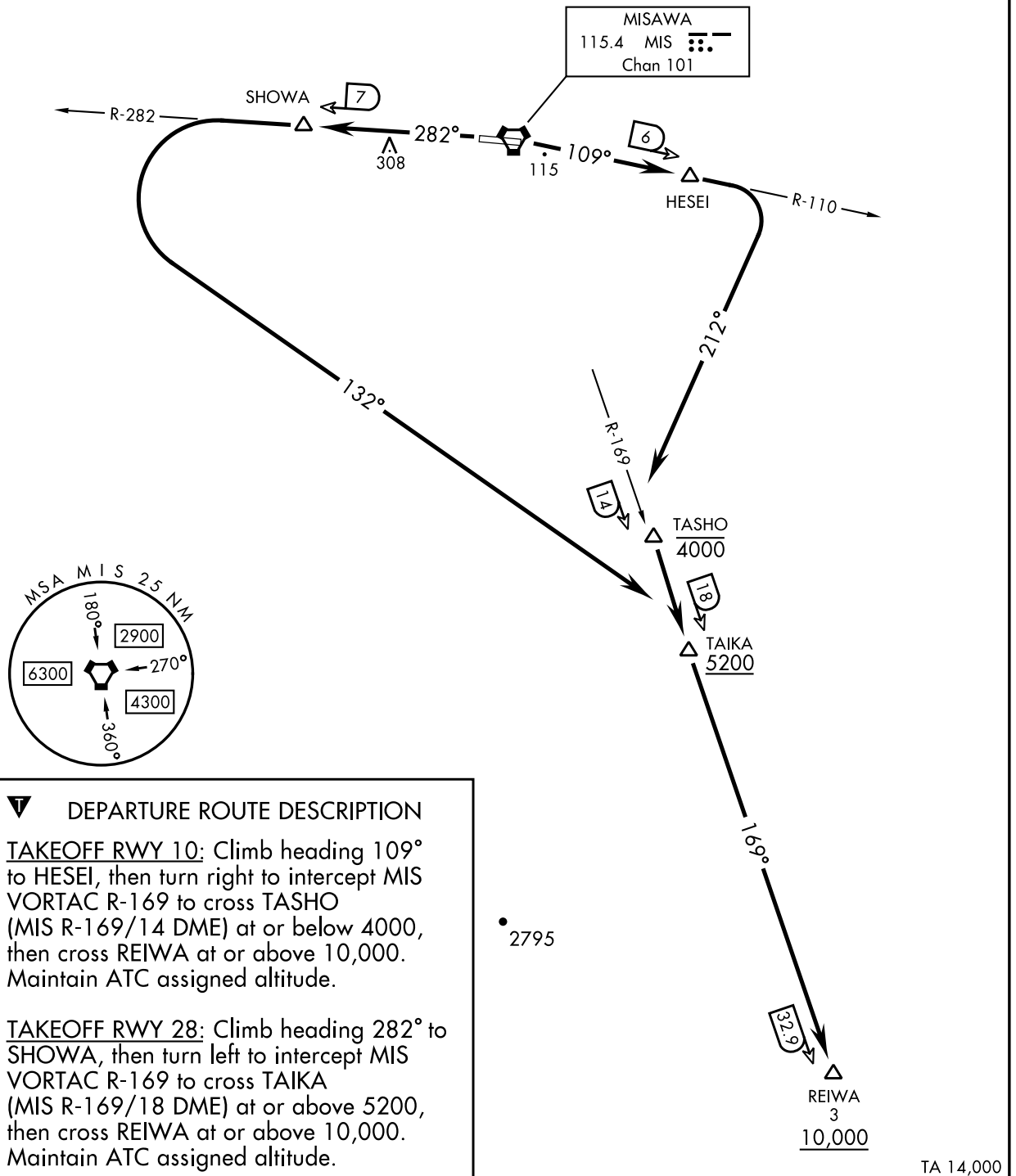
RJSM / MISAWA

REIWA TWO DEPARTURE

ATIS ★ 128.4 315.35
CLNC DEL
118.65 275.8
TOWER
118.1 315.8
DEP CON
125.3 363.8

Rwy	Knots	60	120	180	240	300	360
10	V/V(fpm)	289	578	867	1156	1445	1734
28	V/V(fpm)	249	498	747	996	1245	1494

ATC Climb Rate to 10,000



INTENTIONALLY LEFT BLANK