

STANDARD ARRIVAL CHART -INSTRUMENT

RJSY / SHONAI

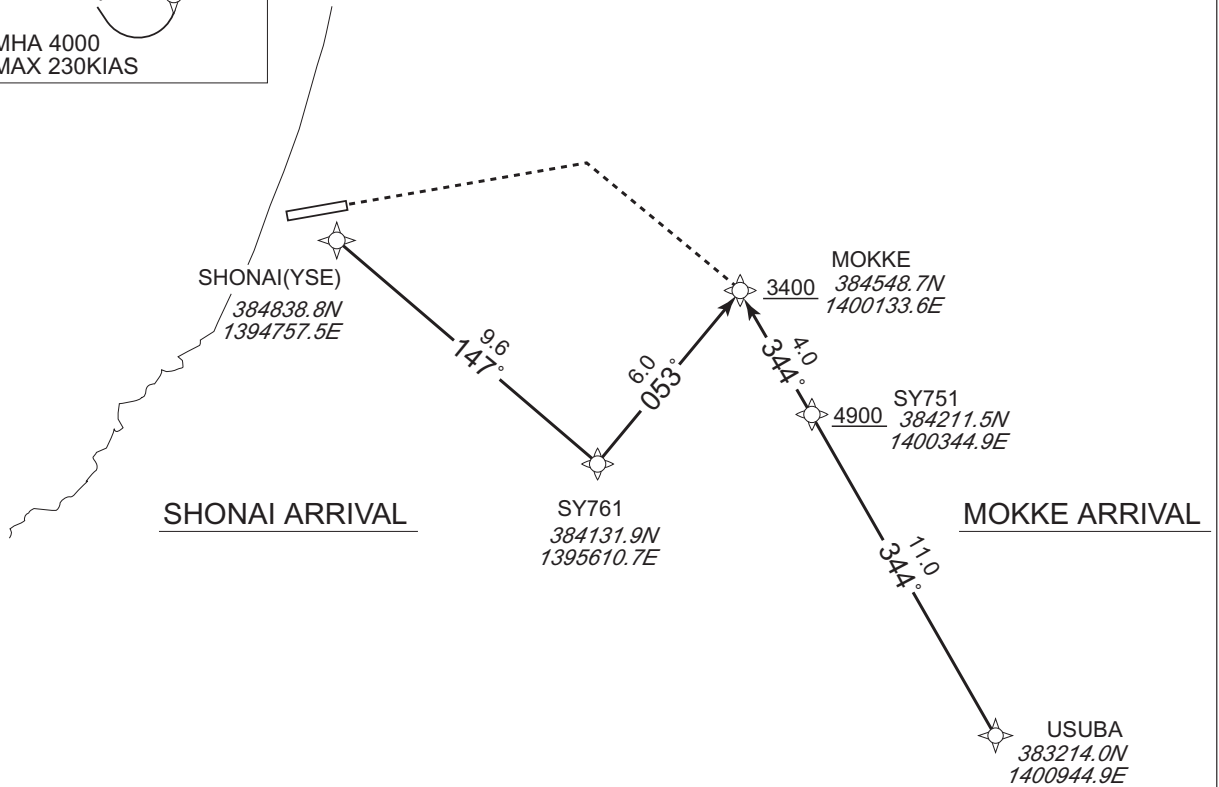
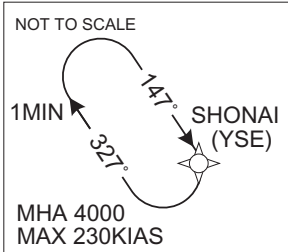
RNAV STAR RWY27

MOKKE ARRIVAL
SHONAI ARRIVAL

RNP1

Note GNSS required.

VAR 9°W



CHANGE : Description of VAR, VOR/DME.

STANDARD ARRIVAL CHART -INSTRUMENT

RJSY / SHONAI

RNAV STAR RWY27

MOKKE ARRIVAL

From USUBA, to SY751 at or above 4900FT, to MOKKE at or above 3400FT.

Serial Number	Path Descriptor	Waypoint Identifier	Fly Over	Course °M(°T)	Magnetic Variation	Distance (NM)	Turn Direction	Altitude (FT)	Speed (KIAS)	Vertical Angle	Navigation Specification
001	IF	USUBA	-	-	-8.8	-	-	-	-	-	RNP1
002	TF	SY751	-	344 (334.8)	-8.8	11.0	-	+4900	-	-	RNP1
003	TF	MOKKE	-	344 (334.8)	-8.8	4.0	-	+3400	-	-	RNP1

SHONAI ARRIVAL

From YSE, to SY761, to MOKKE at or above 3400FT.

Serial Number	Path Descriptor	Waypoint Identifier	Fly Over	Course °M(°T)	Magnetic Variation	Distance (NM)	Turn Direction	Altitude (FT)	Speed (KIAS)	Vertical Angle	Navigation Specification
001	IF	YSE	-	-	-8.8	-	-	-	-	-	RNP1
002	TF	SY761	-	147 (137.9)	-8.8	9.6	-	-	-	-	RNP1
003	TF	MOKKE	-	053 (044.4)	-8.8	6.0	-	+3400	-	-	RNP1

Path	Waypoint Identifier	Inbound Course °M(°T)	Magnetic Variation	Outbound Time (MIN)	Turn Direction	Minimum Altitude (FT)	Maximum Altitude (FT)	Speed (KIAS)	Navigation Specification
Hold	YSE	147 (137.9)	-8.8	1.0(-14000)	R	4000	FL140	-230(-14000)	RNP1

CHANGE : Navigation Specification(Basic RNP1 → RNP1).