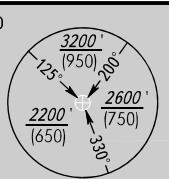


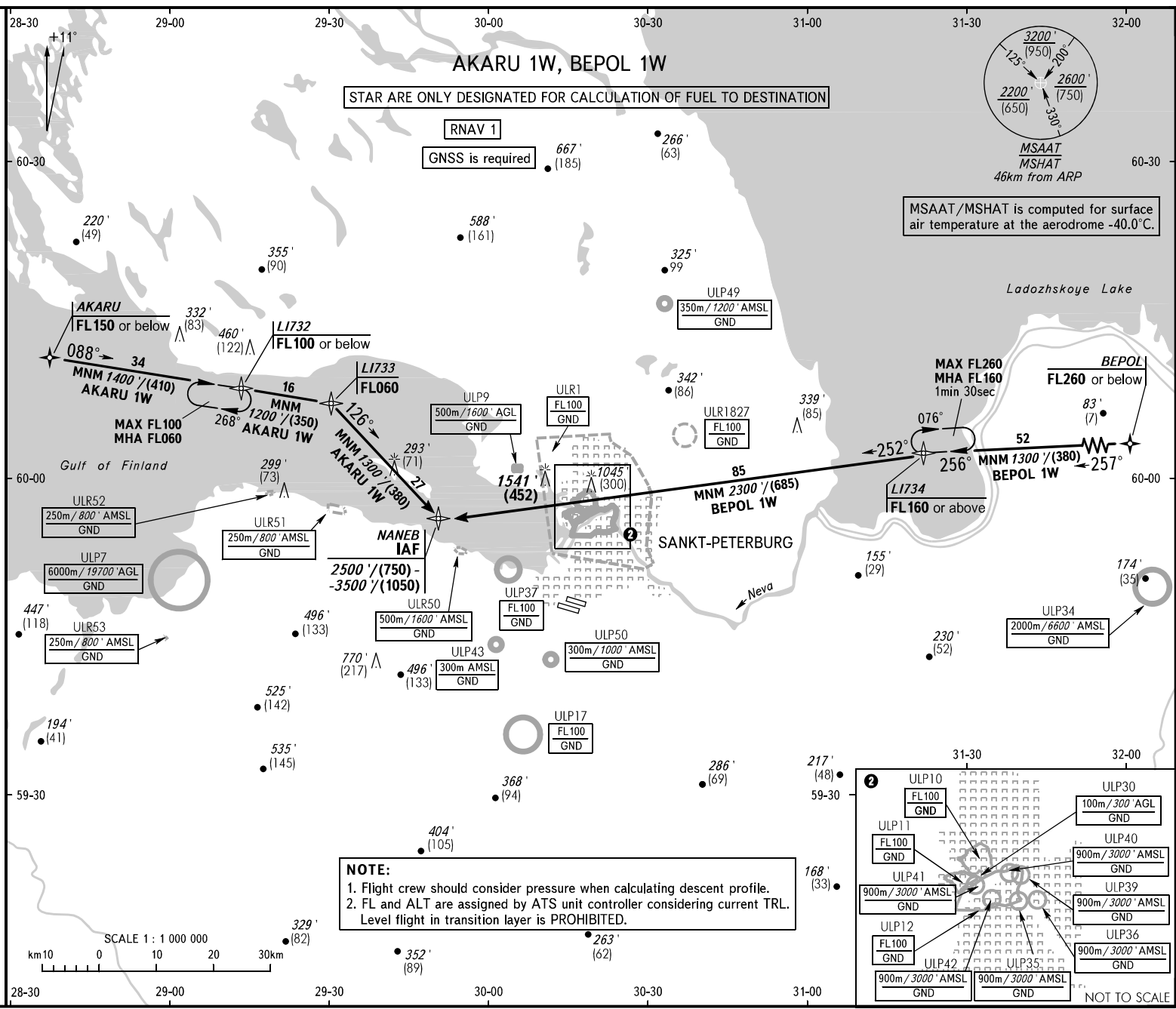
STANDARD ARRIVAL CHART
INSTRUMENT (STAR) - ICAO

TRANSITION
LEVEL: 1

SANKT-PETERBURG, RUSSIA
PULKOVO
RNAV RWY 10R, 10L



MSAAT /MSHAT is computed for surface air temperature at the aerodrome -40.0°C.



NOTE:
1. Flight crew should consider pressure when calculating descent profile.
2. FL and ALT are assigned by ATS unit controller considering current TRL. Level flight in transition layer is PROHIBITED.

APPROACH

Sector 1 (EAST)	H24	119,300
Sector 2 (WEST)	0600-1600	125,200
Sector 2 (WEST)	1600-0600	119,300
RADAR	H24	120,300
TOWER	RWY 10L/28R	118,100
TOWER	RWY 10R/28L	118,700

BEARINGS AND TRACKS ARE MAGNETIC

ALTITUDES IN FEET

HEIGHTS IN METRES

ELEVATIONS IN FEET

DISTANCES IN KILOMETRES

Alt set: QNH/QFE on req.)
-hPa(mm on req.)

1 TRANSITION LEVEL:
- FLO50 when ONH is 996 hPa (747mm mercury column) or above;
- FLO60 when ONH is 960 hPa (720mm mercury column) or above, but less than 996 hPa (747mm mercury column);
- FLO70 when ONH is less than 960 hPa (720mm mercury column).

NOTE:
1. Descent shall be carried out only by ATS unit instruction.
2. The flight crews shall advise ATS unit if unable to adhere to altitude (flight level) or speed restrictions.

Federal Air Transport Agency

AIRC AMDT 13/23