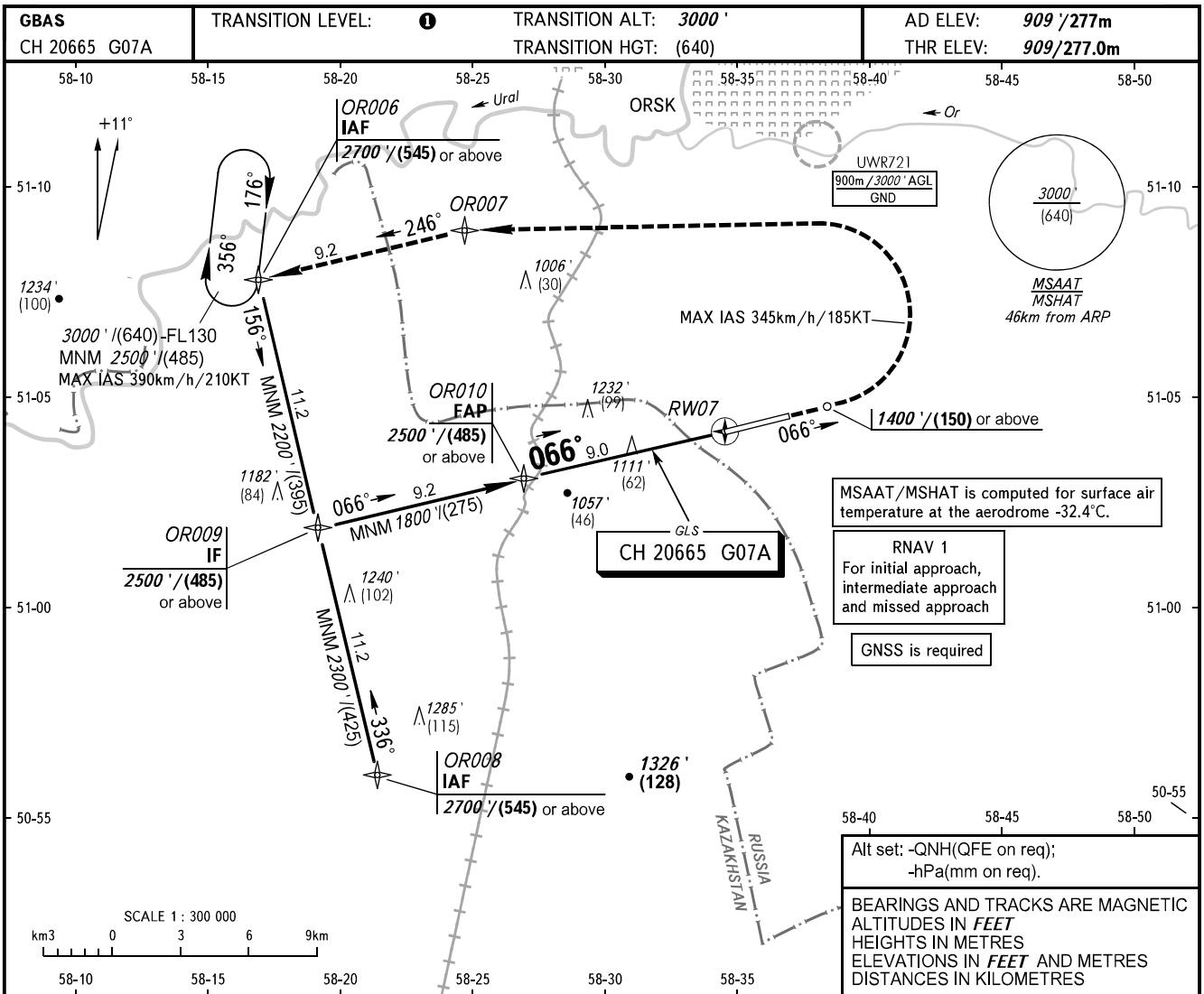


**INSTRUMENT  
APPROACH  
CHART - ICAO**

TOWER 122.700

**ORSK, RUSSIA**  
ORSK  
GLS RWY 07



MSAAT/MSHAT is computed for surface air temperature at the aerodrome -32.4°C.

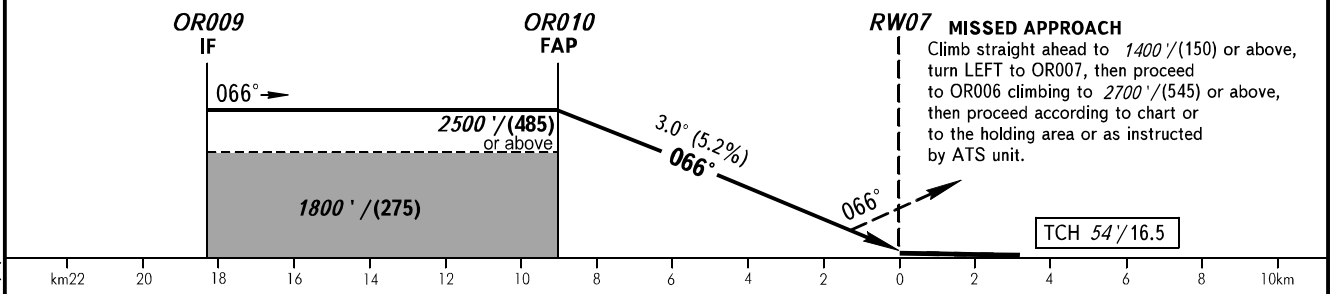
RNAV 1  
For initial approach, intermediate approach and missed approach

GNSS is required

Alt set: -QNH(QFE on req);  
-hPa(mm on req).

BEARINGS AND TRACKS ARE MAGNETIC  
ALTITUDES IN FEET  
HEIGHTS IN METRES  
ELEVATIONS IN FEET AND METRES  
DISTANCES IN KILOMETRES

DIST to RW07	8.0	6.0	4.0	2.0
ALTITUDE/HEIGHT	2330'/(435)	1960'/(320)	1650'/(230)	1310'/(125)



OCA(H)		A	B	C	D
Straight-in Approach	CAT I	1089' (180') (55)	1102' (193') (59)	1110' (201') (62)	1120' (211') (65)
Circling		1310' (400') (125)	1410' (500') (155)	1630' (720') (220)	1660' (750') (230)

1 TRANSITION LEVEL:  
- FL040 when QNH is 1013 hPa (760mm mercury column) or above;  
- FL050 when QNH is 977 hPa (733mm mercury column) or above, but less than 1013 hPa (760mm mercury column);  
- FL060 when QNH is less than 977 hPa (733mm mercury column).

GROUND SPEED	km/h	150	180	210	240	270	300	330	360	390	420	450
RATE OF DESCENT	m/s	2.2	2.6	3.0	3.5	3.9	4.3	4.8	5.2	5.6	6.1	6.5
	ft/min	427	512	597	682	768	853	938	1024	1109	1194	1280

CHANGE: Heading, MSAAT/MSHAT, OCA(H)