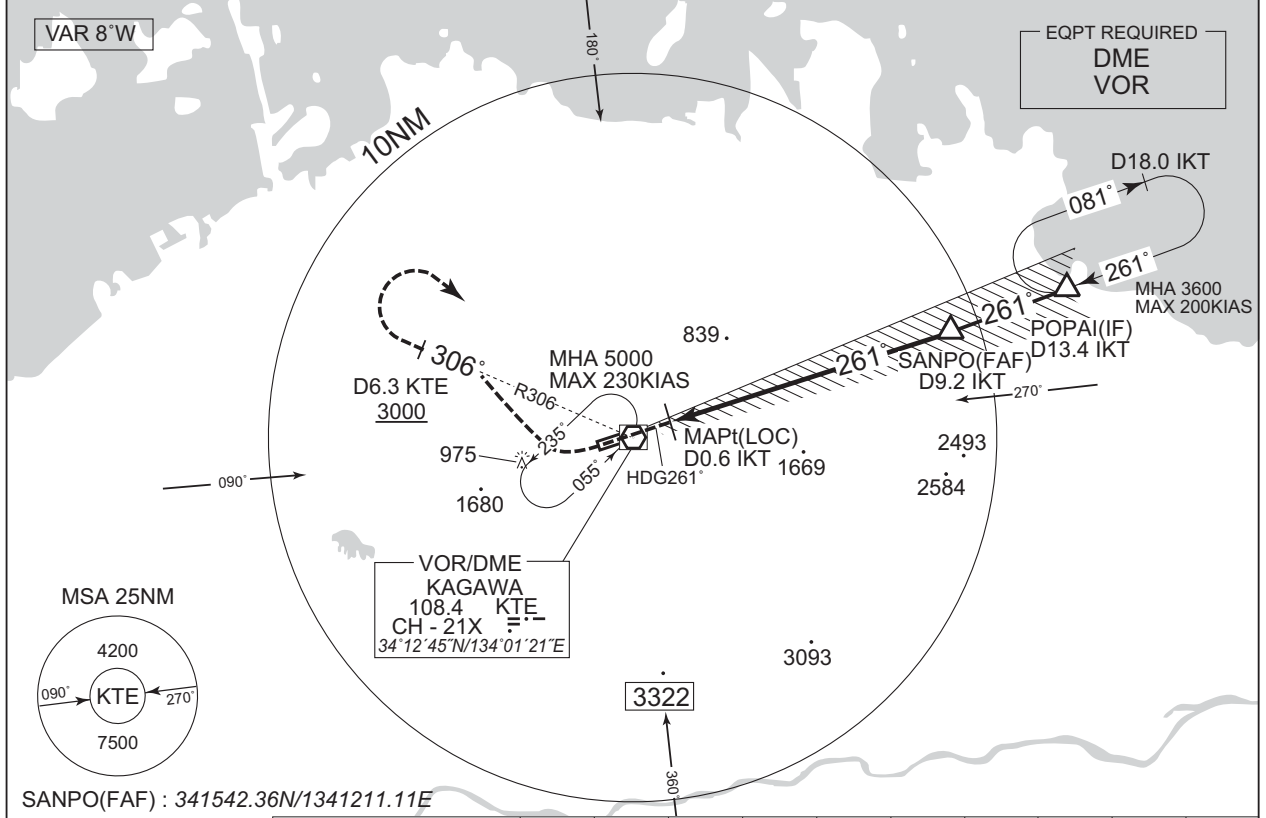


INSTRUMENT APPROACH CHART

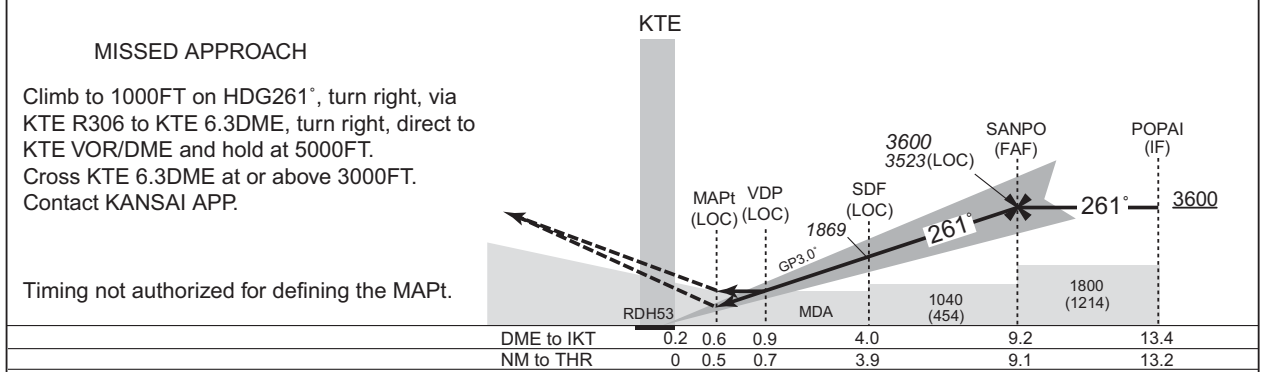
RJOT / TAKAMATSU

ILS Z or LOC Z RWY26

KANSAI APP 121.2 – 120.4 – 261.2	ILS LOC 109.7 IKT ILS-GP 333.2 ILS-DME CH-34	TAKAMATSU TOWER 118.3 – 126.2	RADAR AVBL ATIS 127.45
-------------------------------------	---	----------------------------------	---------------------------



NM to IKT	MAPt	2	3	4	5	6	7	8	9	FAF
ALT (3.0° APCH Path)	-	1224	1543	1861	2180	2498	2817	3135	3453	3523



Missed APCH climb gradient MNM 5.0%

MINIMA		THR elev. 586		AD elev. 607		
CAT	CAT I		LOC		CIRCLING	
	DA(H)	RVR/CMV	MDA(H)	RVR/CMV	MDA(H)	VIS
A	786 (200)	550	920 (334)	900	1140 (533)	1600
B				1000		
C				1310 (703)		
D				1400		

Circling to NORTH side of RWY only.
MINIMA with Missed APCH climb gradient of 2.5% are not established.