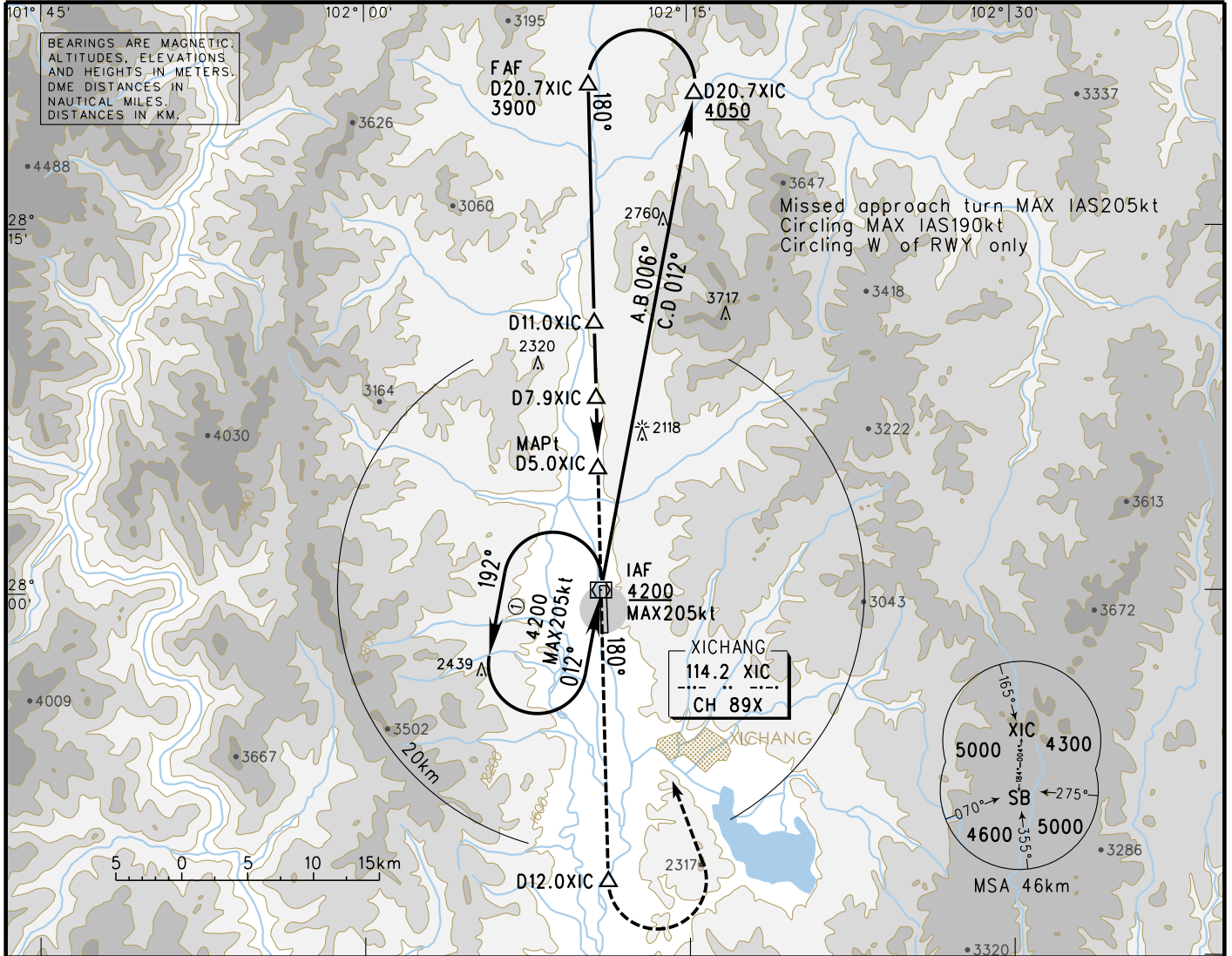


# INSTRUMENT APPROACH CHART-ICAO

## ZUXC XICHANG/Qingshan

VAR1.2° W AERODROME ELEV 1559.2 ATIS 127.4  
 THR RWY18 ELEV 1559.2 TWR 118.2(130.0)

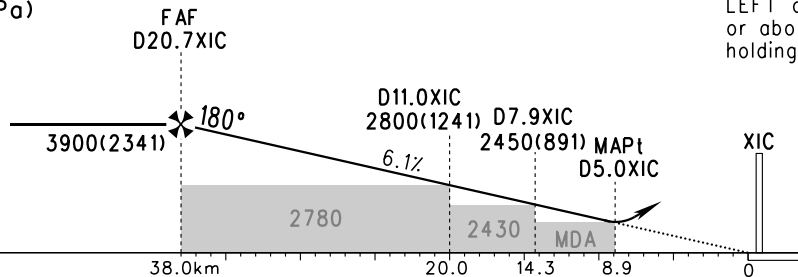
VOR/DME RWY18



DME (XIC) (NM)	20	18	16	14	12	10	8	6
ALT (m)	3813	3587	3361	3135	2909	2683	2457	2231

TL 5400  
 TA 4800  
 5100(QNH ≥ 1031hPa)  
 4500(QNH ≤ 979hPa)

**MISSED APPROACH**  
 Climb straight ahead to XIC, track 180° and climb to D12.0XIC, turn LEFT and climb to XIC at 4200 or above, contact ATC or join in holding pattern.



VOR/DME MDA(H) VIS	A	B	C	D	FAF-MAPt 29.1km							
		2120(561) 5000				80	100	120	140	160	180	
					GS in kt	150	185	220	260	295	335	
					Time min:sec	11:38	9:26	7:56	6:43	5:55	5:13	
					Rate of descent m/s	2.5	3.1	3.7	4.4	5.0	5.7	
CIRCLING MDA(H) VIS	2120(561) 5000		2295(736) 5000		2630(1071) 5000							

Changes: Symbol.