

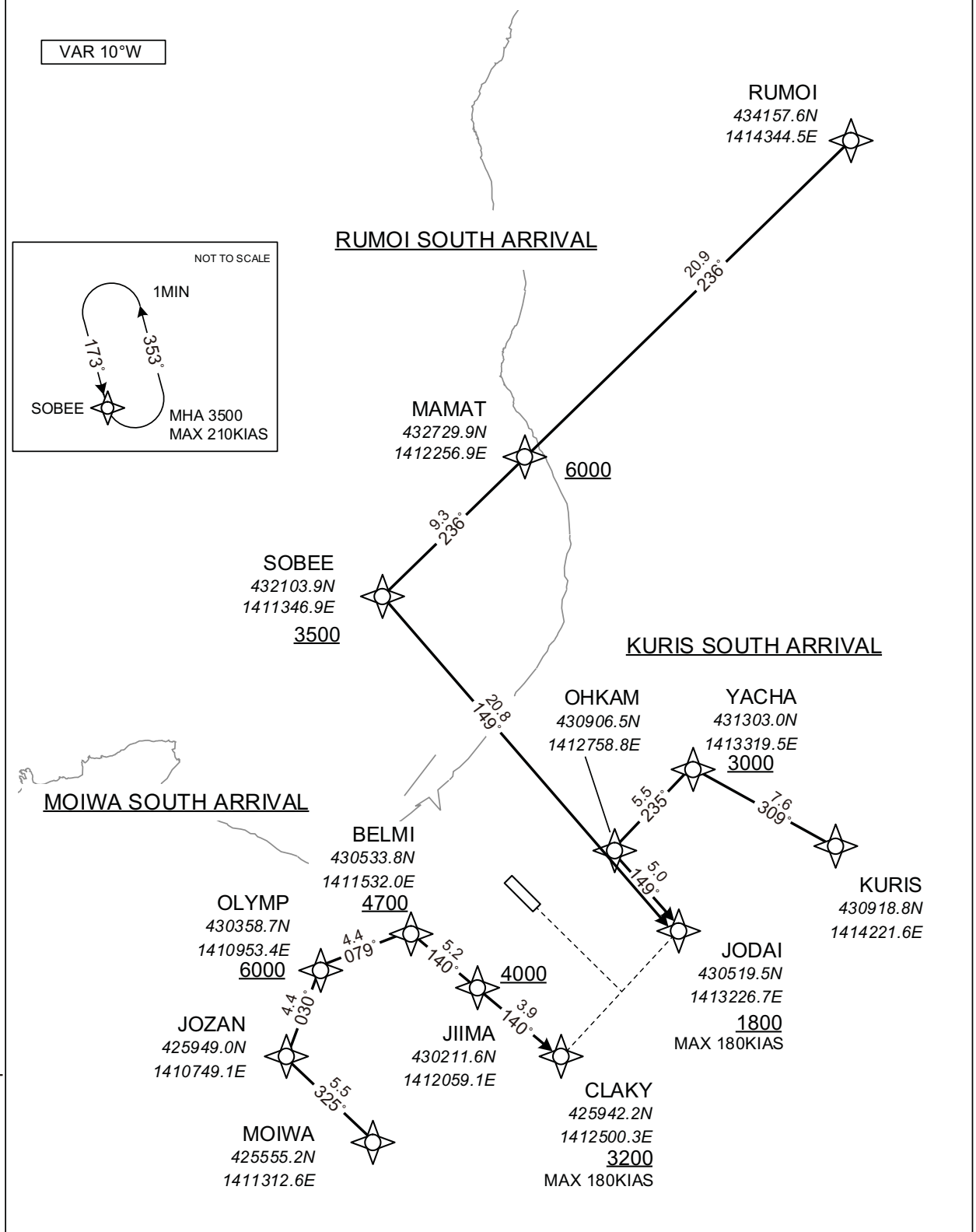
STANDARD ARRIVAL CHART-INSTRUMENT

RJCO / SAPPORO

RNAV STAR RWY32

MOIWA SOUTH ARRIVAL RUMOI SOUTH ARRIVAL KURIS SOUTH ARRIVAL	RNP1
---	------

Note GNSS required.



CHANGE : Description of VAR.

STANDARD ARRIVAL CHART-INSTRUMENT

RJCO / SAPPORO

RNAV STAR RWY32

MOIWA SOUTH ARRIVAL

From MOIWA, to JOZAN, to OLYMP at or above 6000FT, to BELMI at or above 4700FT, to JIIMA at or above 4000FT, to CLAKY at or above 3200FT.

Serial Number	Path Descriptor	Waypoint Identifier	Fly Over	Course °M(°T)	Magnetic Variation	Distance (NM)	Turn Direction	Altitude (FT)	Speed (KIAS)	Vertical Angle	Navigation Specification
001	IF	MOIWA	-	-	-9.9	-	-	-	-	-	RNP1
002	TF	JOZAN	-	325 (314.7)	-9.9	5.5	-	-	-	-	RNP1
003	TF	OLYMP	-	030 (020.0)	-9.9	4.4	-	+6000	-	-	RNP1
004	TF	BELMI	-	079 (068.9)	-9.9	4.4	-	+4700	-	-	RNP1
005	TF	JIIMA	-	140 (130.2)	-9.9	5.2	-	+4000	-	-	RNP1
006	TF	CLAKY	-	140 (130.3)	-9.9	3.9	-	+3200	-180	-	RNP1

RUMOI SOUTH ARRIVAL

From RUMOI, to MAMAT at or above 6000FT, to SOBEE at or above 3500FT, to JODAI at or above 1800FT.

Serial Number	Path Descriptor	Waypoint Identifier	Fly Over	Course °M(°T)	Magnetic Variation	Distance (NM)	Turn Direction	Altitude (FT)	Speed (KIAS)	Vertical Angle	Navigation Specification
001	IF	RUMOI	-	-	-9.9	-	-	-	-	-	RNP1
002	TF	MAMAT	-	236 (226.3)	-9.9	20.9	-	+6000	-	-	RNP1
003	TF	SOBEE	-	236 (226.0)	-9.9	9.3	-	+3500	-	-	RNP1
004	TF	JODAI	-	149 (139.1)	-9.9	20.8	-	+1800	-180	-	RNP1

Path	Waypoint Identifier	Inbound Course °M(°T)	Magnetic Variation	Outbound Time (MIN)	Turn Direction	Minimum Altitude (FT)	Maximum Altitude (FT)	Speed (KIAS)	Navigation Specification
Hold	SOBEE	173 (163.3)	-9.9	1.0(-14000)	L	3500	FL140	-210(-14000)	RNP1

KURIS SOUTH ARRIVAL

From KURIS, to YACHA at or above 3000FT, to OHKAM, to JODAI at or above 1800FT.

Serial Number	Path Descriptor	Waypoint Identifier	Fly Over	Course °M(°T)	Magnetic Variation	Distance (NM)	Turn Direction	Altitude (FT)	Speed (KIAS)	Vertical Angle	Navigation Specification
001	IF	KURIS	-	-	-9.9	-	-	-	-	-	RNP1
002	TF	YACHA	-	309 (299.6)	-9.9	7.6	-	+3000	-	-	RNP1
003	TF	OHKAM	-	235 (224.7)	-9.9	5.5	-	-	-	-	RNP1
004	TF	JODAI	-	149 (139.2)	-9.9	5.0	-	+1800	-180	-	RNP1

CHANGE : Navigation Specification(Basic RNP1 → RNP1).