

WAAS CH <b>50202</b> <b>W03A</b>	APP CRS <b>035°</b>	Rwy Idg <b>13000</b> TDZE <b>3667</b> Apr Elev <b>3671</b>
--	------------------------	--

# RNAV (GPS) RWY 3

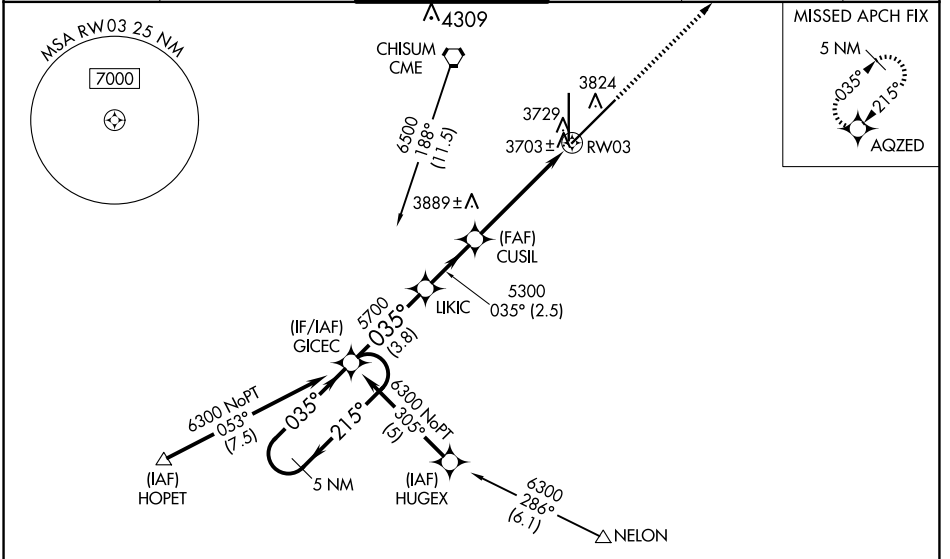
ROSWELL AIR CENTER (ROW)

RNP APCH - GPS.

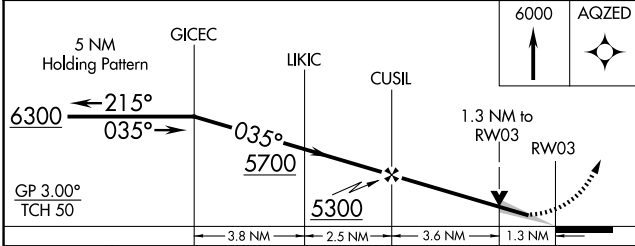
**ASR** For uncompensated Baro-VNAV systems, LNAV/VNAV NA below -22°C or above 41°C. When local altimeter setting not received, Use Artesia altimeter setting; increase LPV DA to 3997 feet and all visibilities ¼ SM; increase all MDAs 80 feet and LNAV visibility Cat C ⅔ SM, Cat D ⅝ SM and Circling visibility Cat D ½ SM. Baro-VNAV and VDP NA when using Artesia altimeter setting.

MISSED APPROACH: Climb to 6000 direct AQZED and hold.

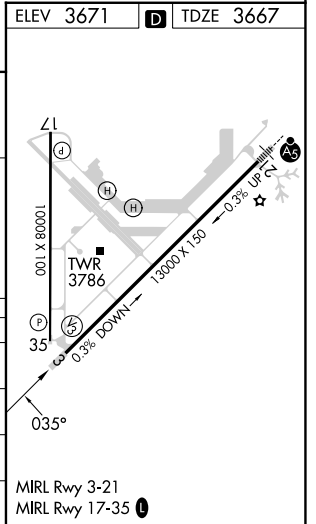
ATIS <b>128.45 306.2</b>	ROSWELL APP CON * <b>119.6 239.0</b>	ROSWELL TOWER * <b>118.5 (CTAF) 233.7</b>	GND CON <b>121.9 348.6</b>	CLNC DEL <b>132.875 282.25</b>	UNICOM <b>122.95</b>
-----------------------------	---	--	-------------------------------	-----------------------------------	-------------------------



ELEV 3671	D	TDZE 3667
-----------	---	-----------



CATEGORY	A	B	C	D
LPV DA	3917-¾		250 (300-¾)	
LNAV/VNAV DA	3987-1		320 (400-1)	
LNAV MDA	4140-1	473 (500-1)	4140-1¼ 473 (500-1¼)	4140-1½ 473 (500-1½)
CIRCLING	4140-1	469 (500-1)	4140-1½ 469 (500-1½)	4300-2 629 (700-2)



SW-1, 20 MAR 2025 to 17 APR 2025

SW-1, 20 MAR 2025 to 17 APR 2025