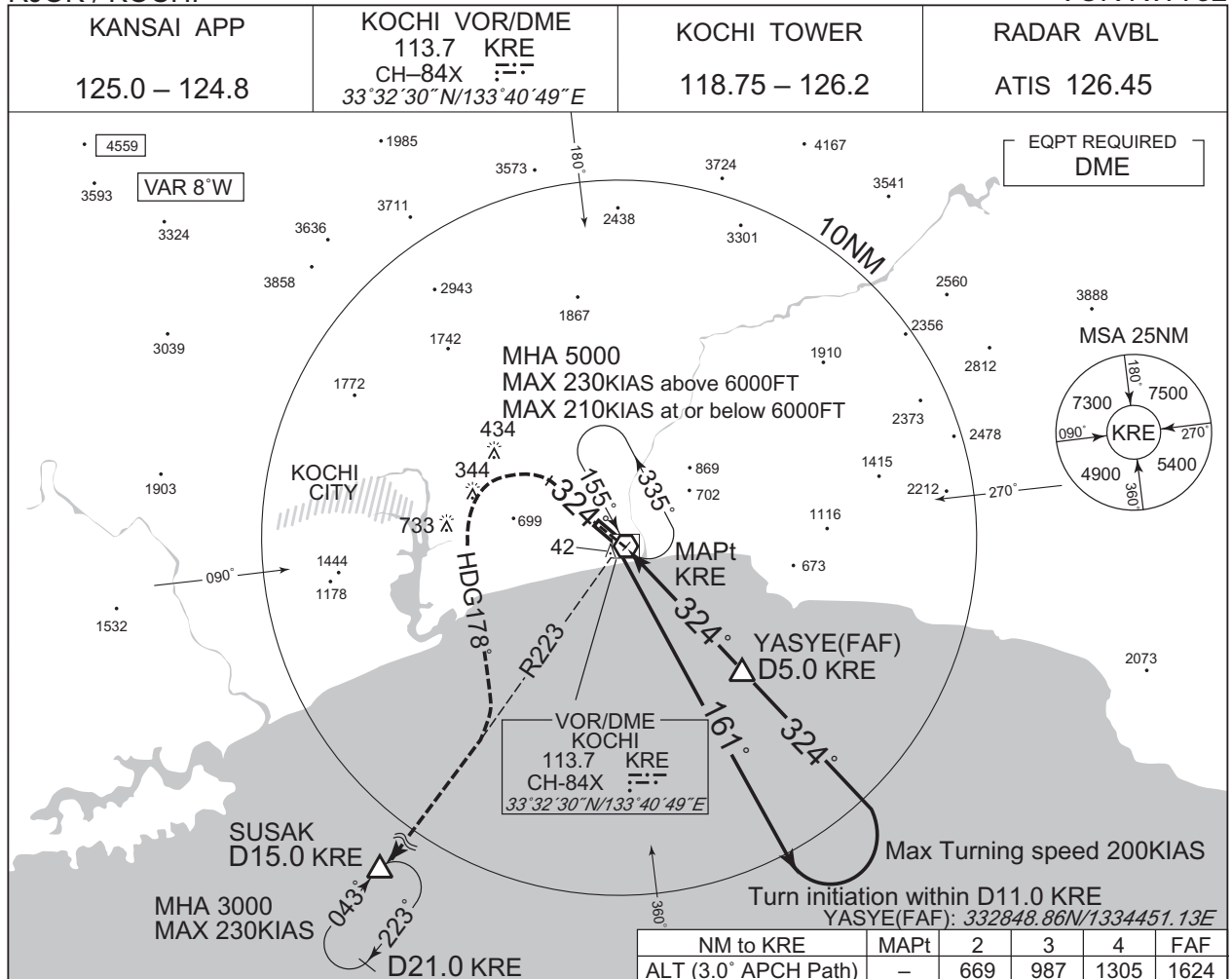


INSTRUMENT APPROACH CHART

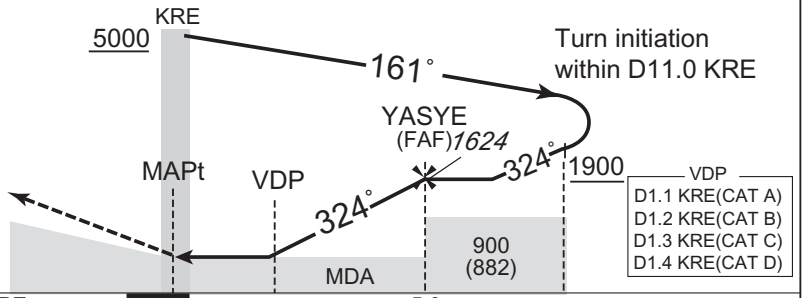
RJOK / KOCHI

VOR RWY32



MISSED APPROACH

Climb via KRE R324 to 500FT, turn left HDG178° to intercept and proceed via KRE R223 to SUSAK and hold at 3000FT. Contact KANSAI APP.



Timing not authorized for defining the MAPt.

DME to KRE	0	5.0
NM to THR	0	4.9

Missed APCH climb gradient MNM 4.5%

MINIMA THR elev. 18 AD elev. 29

CAT	CIRCLING			
	MDA(H)	RVR/CMV	MDA(H)	VIS
A	360 (342)	1200	690 (661)	1600
B	400 (382)	1300		
C	430 (412)	1400	760 (731)	2400
D	450 (432)	1600	830 (801)	3200

Circling to EAST side of RWY only.

MINIMA with Missed APCH climb gradient of 2.5% are not established.

CHANGE : VAR.