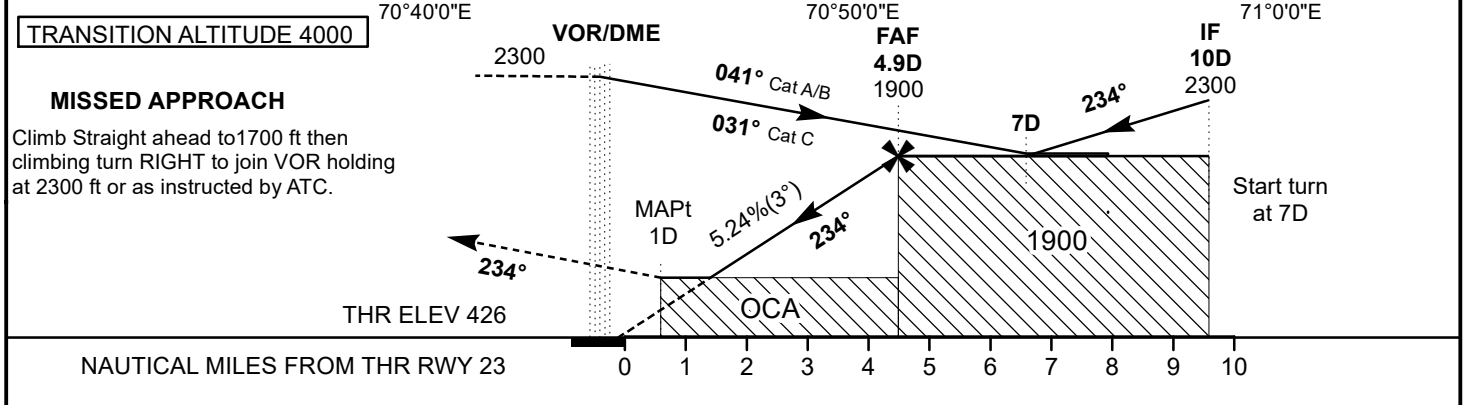
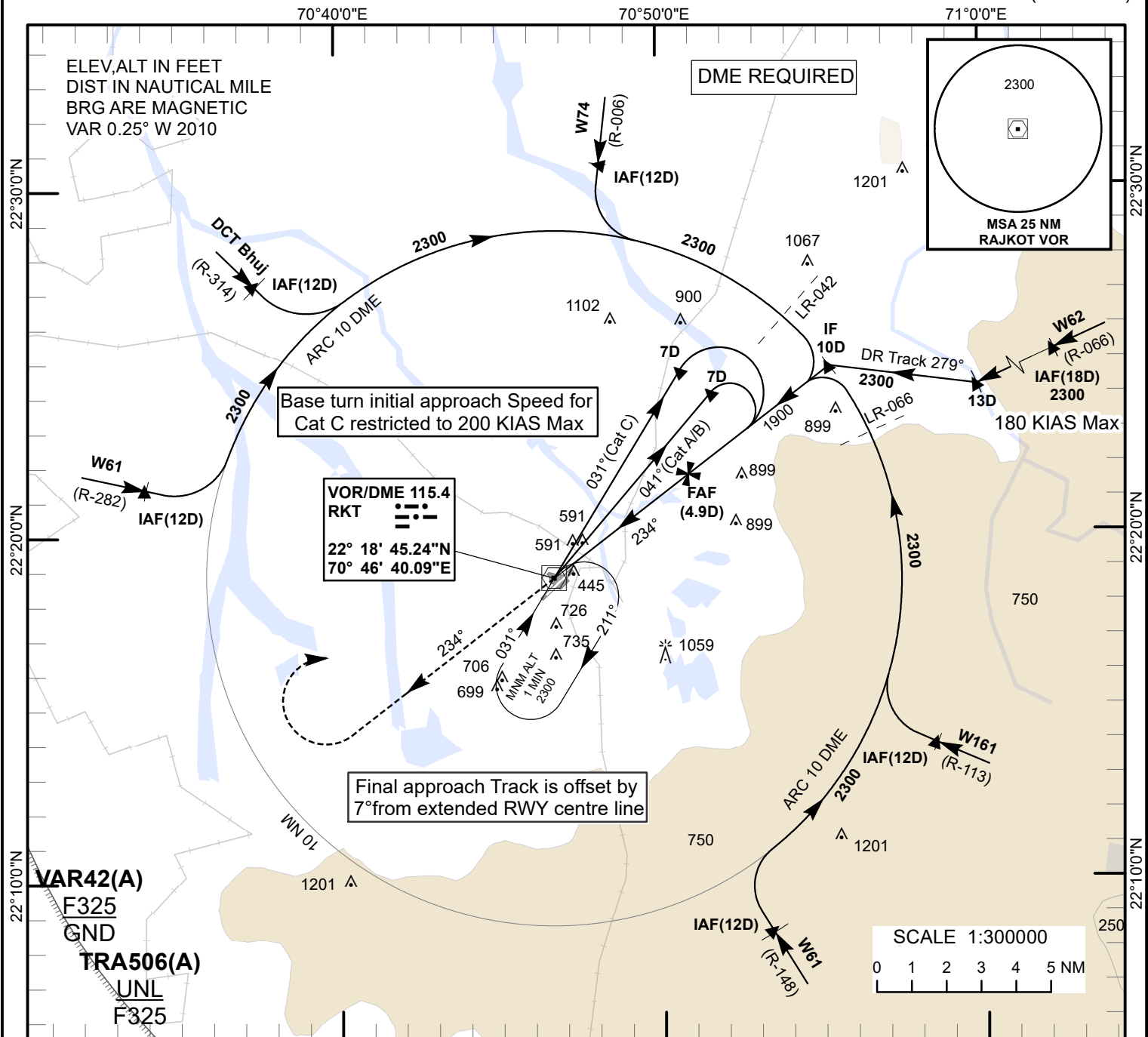


INSTRUMENT APPROACH CHART

AERODROME ELEV 443 ft
HEIGHT RELATED TO
THR RWY 23 - ELEV 426 ft

**TWR 122.100/
124.300**

RAJKOT (VARK)
INDIA
VOR RWY 23
(Cat A/B/C)



OCA(H)		Distance/Altitude information							
CATEGORY OF AIRCRAFT	A/B	C	Distance (RKT/DME)	(NM)	4.9D	4D	3D	2D	
STRAIGHT - IN	910(484)	910(484)	Altitude	(ft)	1900	1620	1310	990	
CIRCLING	1310(867)	1480(1037)	Rate of descent/ Ground speed information						
			Ground Speed	(Kt)	80	100	120	140	160
			Rate of Descent	(Ft/ MIN)	425	530	635	745	850