

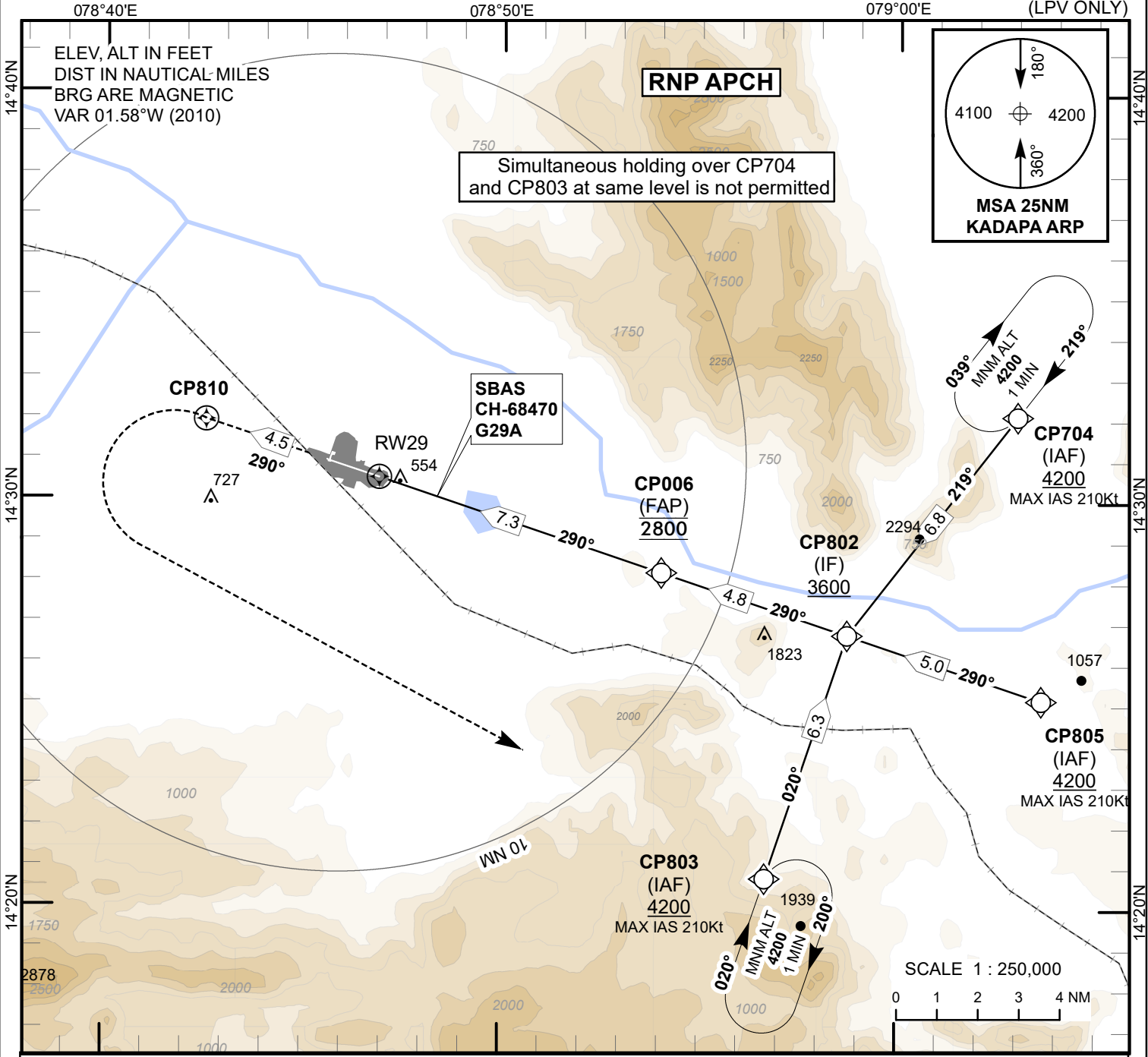
INSTRUMENT APPROACH CHART

SBAS CH-68470 G29A

AERODROME ELEV 444ft
HEIGHTS RELATED TO THR RWY 29 - ELEV 432 ft

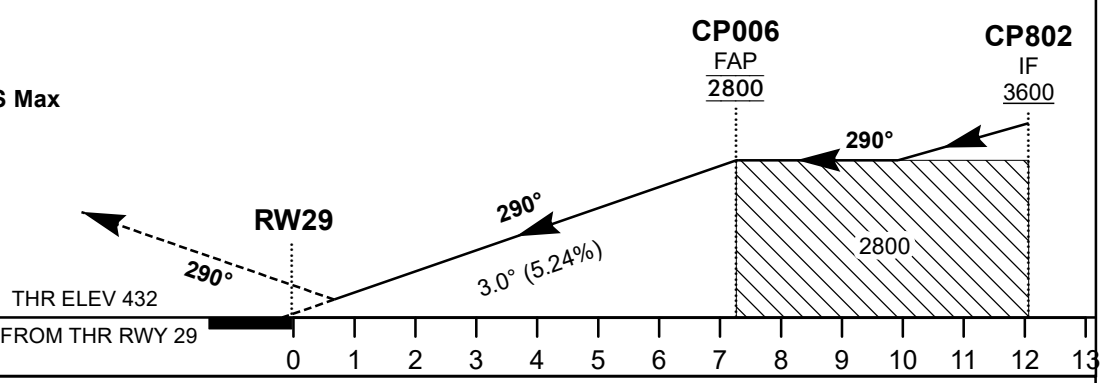
APP 118.350/120.475
TWR 118.350/120.475

KADAPA(VOCP) INDIA
RNP Z RWY 29 (CAT A/B/C) (LPV ONLY)



Transition Alt 5000

MISSED APPROACH
Speed restricted to 210 Kts IAS Max
Climb Straight ahead, Proceed to CP810, then climbing turn LEFT proceed direct to CP803, to join hold at 4200 ft or as instructed by ATC.



OCA(H)	A	B	C
LPV	704(272)		