

(HBU3.HBU) 23334

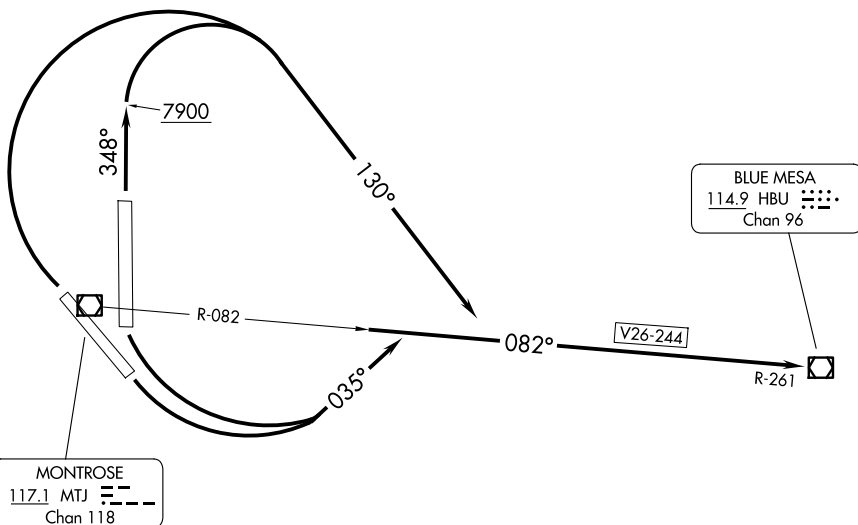
BLUE MESA THREE DEPARTURE

AL-668 (FAA)

MONTROSE RGNL (MTJ)
MONTROSE, COLORADO

**TOP ALTITUDE:
12500**

DENVER CENTER
127.1 343.65
UNICOM
122.8



SW-1, 20 MAR 2025 to 17 APR 2025

SW-1, 20 MAR 2025 to 17 APR 2025

TAKEOFF MINIMUMS

- Rwy 13: Standard with minimum climb of 450' per NM to 11300.
- Rwy 17: Standard with minimum climb of 420' per NM to 11300.
- Rwy 31: Standard with minimum climb of 450' per NM to 11300.
- Rwy 35: Standard with minimum climb of 460' per NM to 11300.

NOTE: Chart not to scale.



DEPARTURE ROUTE DESCRIPTION

TAKEOFF RUNWAYS 13, 17: Climbing left turn to 12500 via heading 035° and MTJ R-082 to HBU VOR/DME, then via assigned route.

TAKEOFF RUNWAY 31: Climbing right turn to 12500 via heading 130° and MTJ R-082 to HBU VOR/DME, then via assigned route.

TAKEOFF RUNWAY 35: Climb heading 348° to 7900 then climbing right turn to 12500 via heading 130° and MTJ R-082 to HBU VOR/DME, then via assigned route.

BLUE MESA THREE DEPARTURE

(HBU3.HBU) 21JUL16

MONTROSE, COLORADO
MONTROSE RGNL (MTJ)