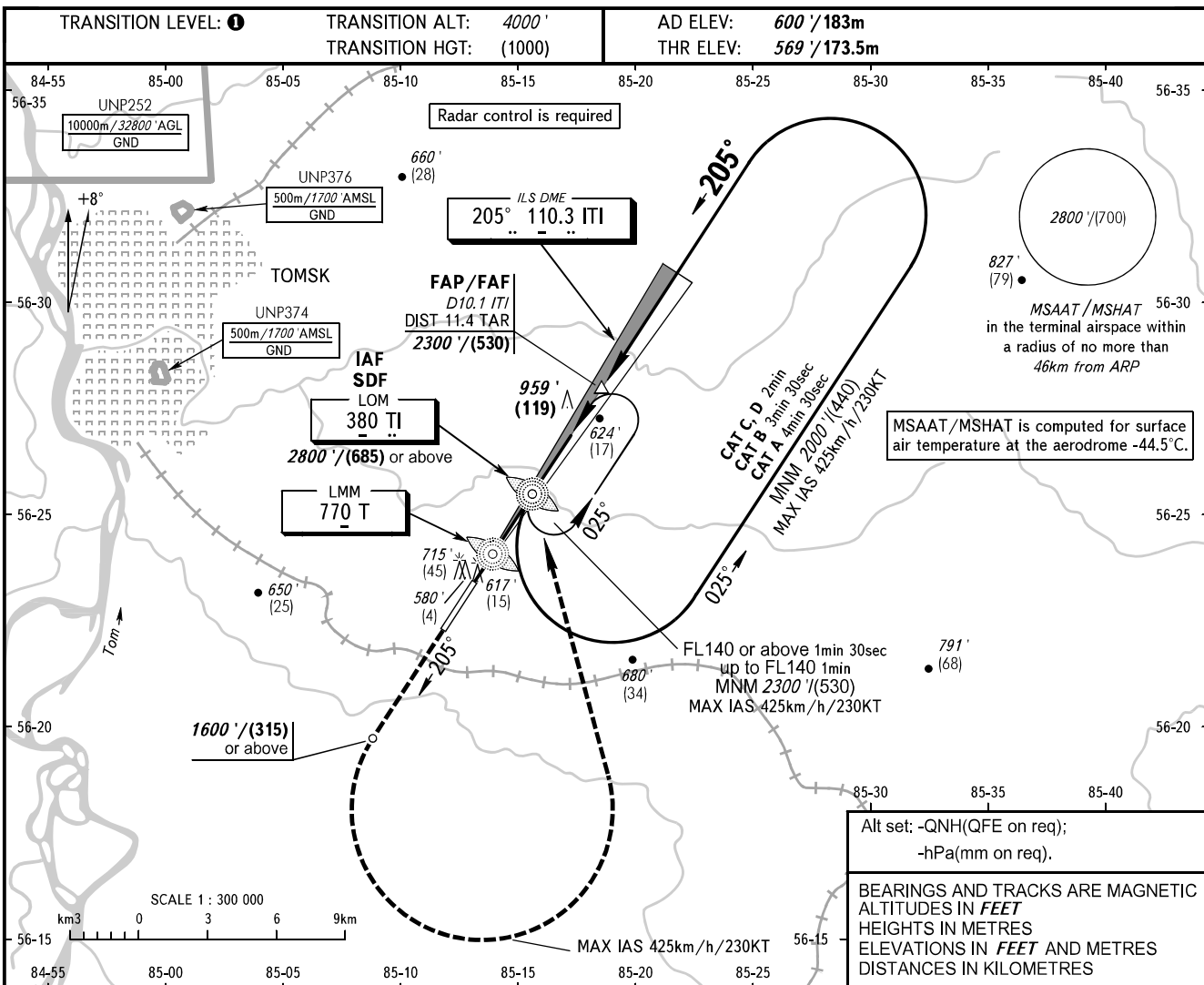


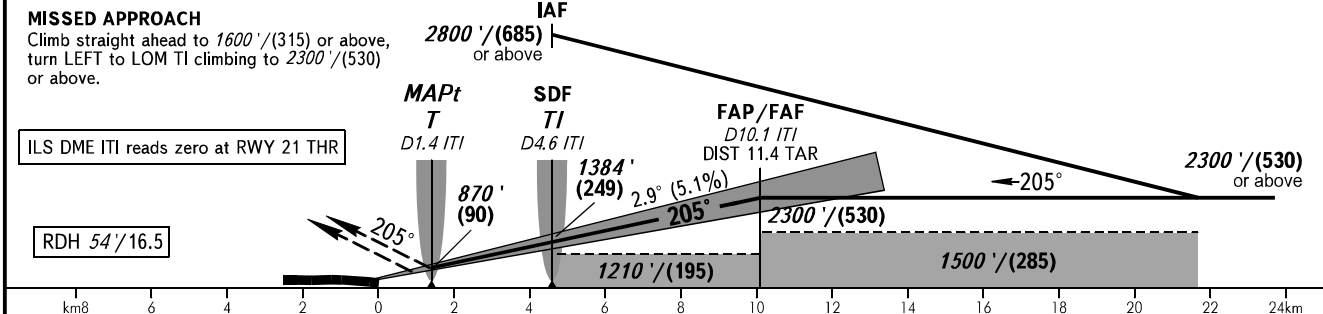
**INSTRUMENT
APPROACH
CHART - ICAO**

TOWER **127.300**

**TOMSK, RUSSIA
BOGASHEVO
ILS X CAT I, LOC X RWY 21**



DME ITI	2.0	4.0	6.0	8.0	10.0
ALTITUDE/HEIGHT	956' / (118)	1288' / (220)	1621' / (321)	1953' / (422)	2285' / (524)



OCA(H)		A	B	C	D	
Straight-in	CAT I	716' (147') (45)	725' (156') (48)	735' (166') (51)	746' (177') (54)	
	Approach	With SDF	870' (300') (90)	870' (300') (90)	870' (300') (90)	870' (300') (90)
		WO SDF	1210' (640') (195)	1210' (640') (195)	1210' (640') (195)	1210' (640') (195)
Circling		1210' (640') (195)	1210' (640') (195)	1250' (650') (200)	1360' (760') (235)	

TRANSITION LEVEL:
 - FL050 when QNH is 1013 hPa (760mm mercury column) or above;
 - FL060 when QNH is 977 hPa (733mm mercury column) or above, but less than 1013 hPa (760mm mercury column);
 - FL070 when QNH is less than 977 hPa (733mm mercury column).
WARNING:
 1. MAPt at LMM T. Timing not authorized for defining MAPt.
 2. DIST indication of TAR is given from ARP.
 3. Turn before passing MAPt is PROHIBITED.

GROUND SPEED	km/h	150	180	210	240	270	300	330	360	390
	kt	81	97	113	130	146	162	178	194	211
RATE OF DESCENT	m/s	2.1	2.6	3.0	3.4	3.8	4.3	4.7	5.1	5.5
	ft/min	418	502	586	669	753	837	920	1004	1088

CHANGE: New chart