

STANDARD DEPARTURE CHART-INSTRUMENT

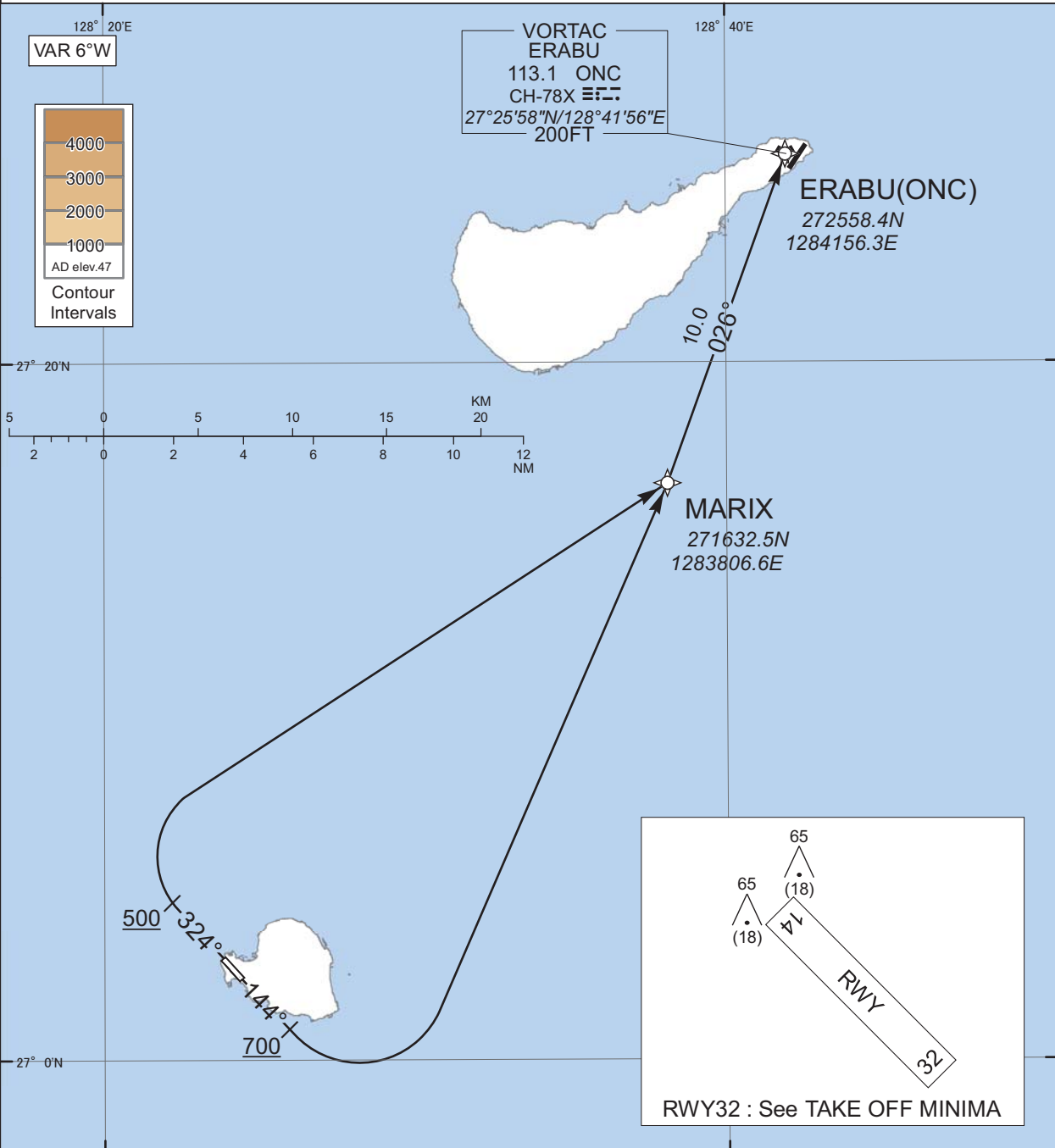
RORY / YORON

RNAV SID

ERABU ONE DEPARTURE

RNP1

Note GNSS required.



CHANGE : Navigation Specification(Basic RNP1 → RNP1).

RWY14 : Climb on HDG144° at or above 700FT, turn left direct to MARIX, to ONC.  
RWY32 : Climb on HDG324° at or above 500FT, turn right direct to MARIX, to ONC.

Note RWY14 : 5.0% climb gradient required up to 700FT.  
OBST ALT 353FT located at 1.5NM 127° FM end of RWY14.

STANDARD DEPARTURE CHART-INSTRUMENT

RORY / YORON

RNAV SID

ERABU ONE DEPARTURE

RWY14

Serial Number	Path Descriptor	Waypoint Identifier	Fly Over	Course °M(°T)	Magnetic Variation	Distance (NM)	Turn Direction	Altitude (FT)	Speed (KIAS)	Vertical Angle	Navigation Specification
001	VA	-	-	144 (138.2)	-6.0	-	-	+700	-	-	RNP1
002	DF	MARIX	-	-	-6.0	-	L	-	-	-	RNP1
003	TF	ONC	-	026 (019.8)	-6.0	10.0	-	-	-	-	RNP1

RWY32

Serial Number	Path Descriptor	Waypoint Identifier	Fly Over	Course °M(°T)	Magnetic Variation	Distance (NM)	Turn Direction	Altitude (FT)	Speed (KIAS)	Vertical Angle	Navigation Specification
001	VA	-	-	324 (318.2)	-6.0	-	-	+500	-	-	RNP1
002	DF	MARIX	-	-	-6.0	-	R	-	-	-	RNP1
003	TF	ONC	-	026 (019.8)	-6.0	10.0	-	-	-	-	RNP1

CHANGE : Navigation Specification(Basic RNP1 → RNP1).