

**INSTRUMENT APPROACH CHART - ICAO**

**AERODROME ELEV 50**

**EGNOS CH 92416 E22A**

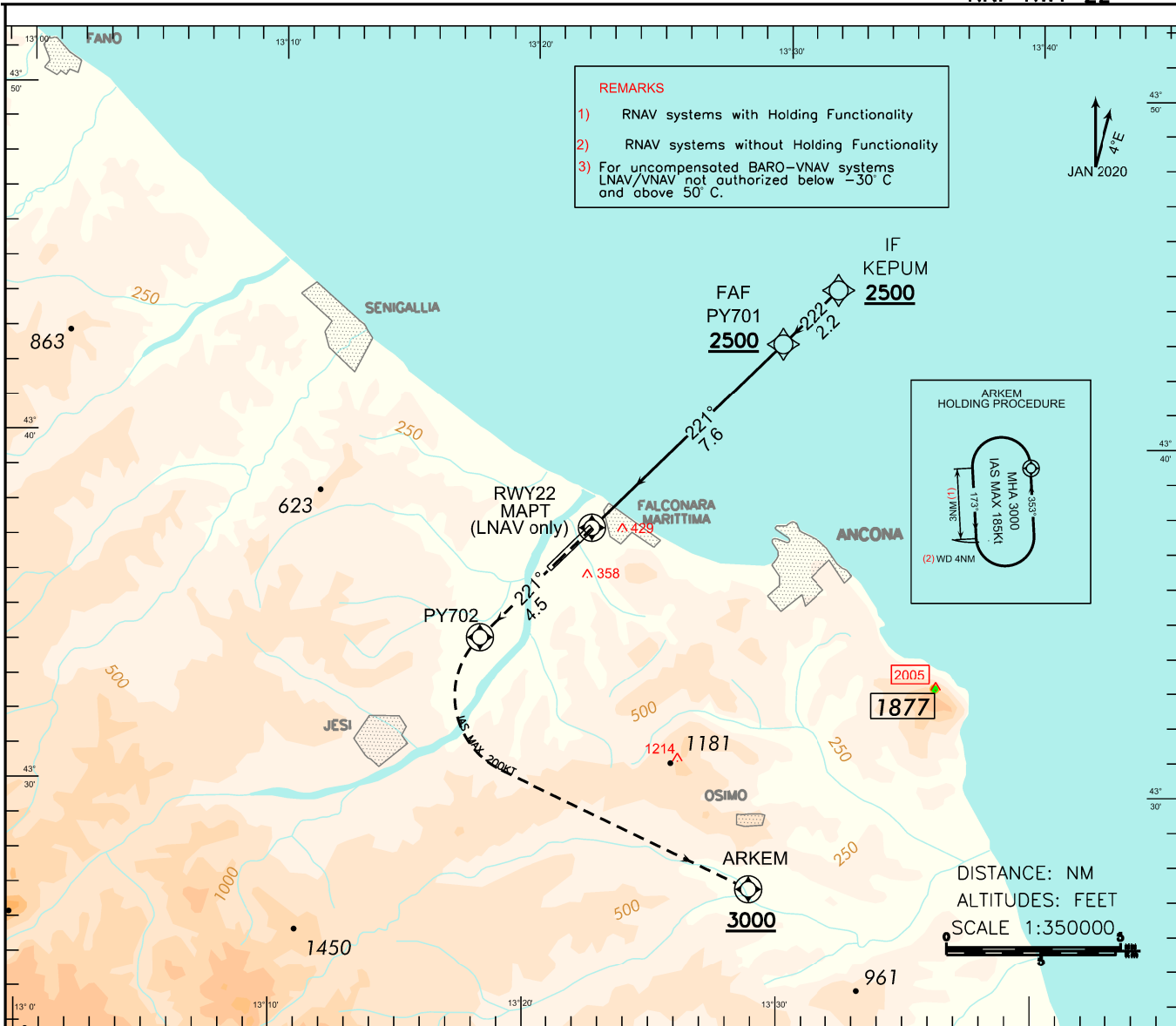
**APP Ancona APP TWR Falconara TWR**

**125.325 119.805**

**ANCONA/FALCONARA LIPY RNP RWY 22**

DOC 8168 ED 6 - 2014 - AMD 8

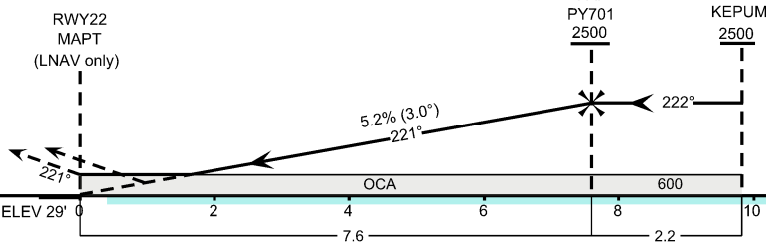
CHANGE: TWR FREQUENCY UPDATED



TRANSITION ALT 6000  
TCH 15.0 M

**MISSED APPROACH:** Climb to 3000 Ft. Continue to PY702 on course 221° then turn left (IAS MAX 200 Kt) direct to ARKEM at or above 3000 Ft to join holding pattern.

**REMARK:** Missed approach obstacle clearance is provided by 2.5% gradient; 5% gradient (304ft/NM) is required to remain inside vertical limits of CTR Zone 2 (Controlled Airspace)



OCA (OCH)		A	B	C	D	<b>WARNING:</b> <b>CIRCLING RWY04</b> <b>(North-west of RWY only)</b> <b>must be performed</b> <b>avoiding API</b> <b>industrial plant</b>	FT per MIN	GS	DIST THR22	ALT (HGT)	MNM SECT ALT 25NM ARP 	
STRAIGHT IN APPROACH	LPV	400 (371)	410 (381)	420 (391)	430 (401)		430	80	7.6	2500 (2471)		
	LNAV/VNAV	564 (535)	576 (547)	584 (555)	595 (566)		540	100	7.0	2310 (2281)		
		LNAV	640 (611)				650	120	6.0	1990 (1961)		
			760	140	4.0		1350 (1321)					
	CIRCLING (see WARNING) only NW of Runway	790 (740)	790 (740)	1030 (980)	1110 (1060)		860	160	3.0	1030 (1001)		
					970	180	2.0	710 (681)				