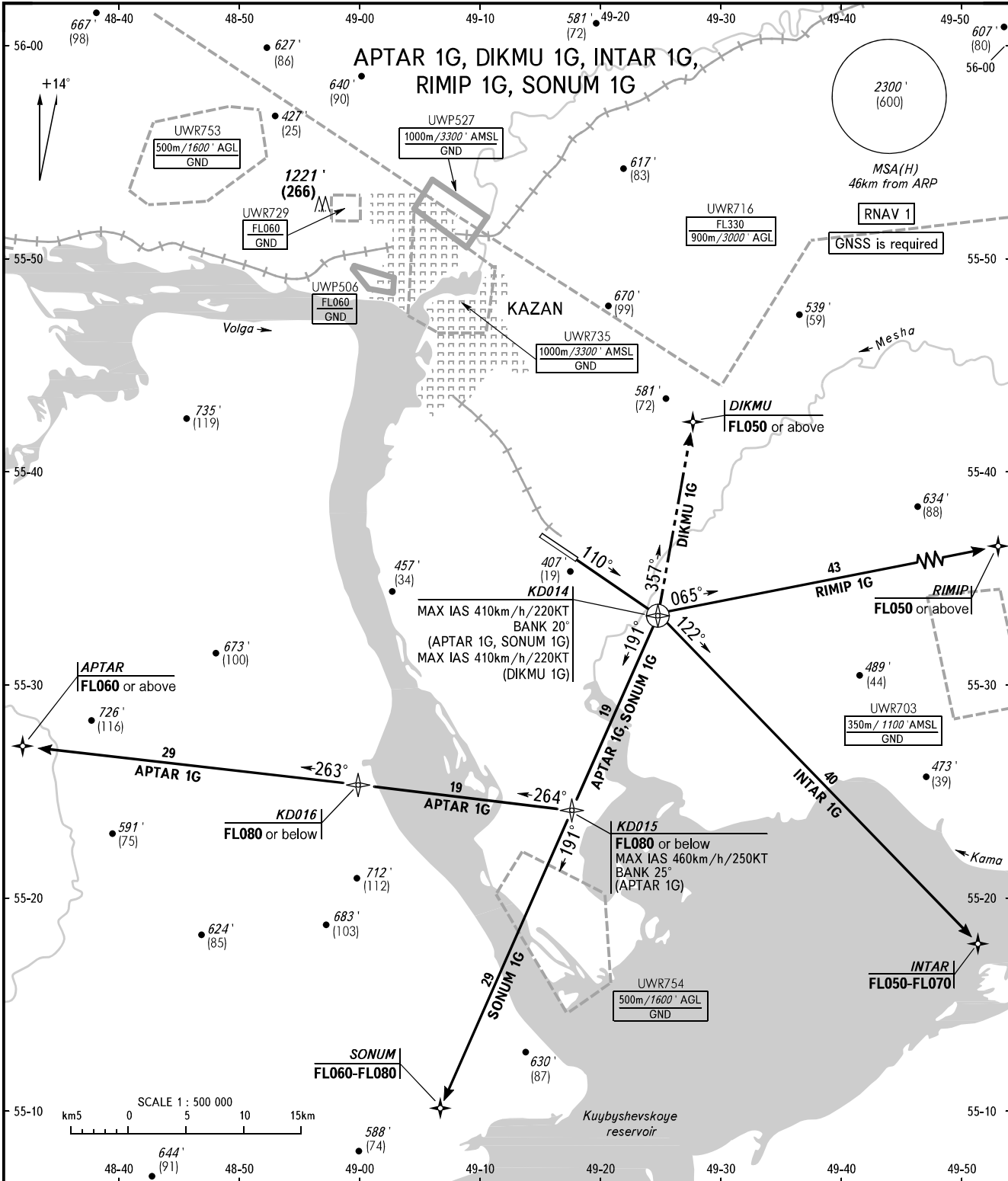


STANDARD DEPARTURE CHART  
INSTRUMENT (SID) - ICAO

KAZAN, RUSSIA  
KAZAN  
RNAV RWY 11

TRANSITION ALT: 4000'  
TRANSITION HGT: (1100)



APPROACH Sector WEST	135.225
Sector EAST	128.625
RADAR	119.400
START	120.300

**NOTE**  
SID DIKMU 1G shall be executed by coordination with ATC.

BEARINGS AND TRACKS ARE MAGNETIC  
ALTITUDES IN FEET  
HEIGHTS IN METRES  
ELEVATIONS IN FEET AND METRES  
DISTANCES IN KILOMETRES

Alt set: -QNH(QFE on req);  
          -hPa(mm on req).

CHANGE: UWP527