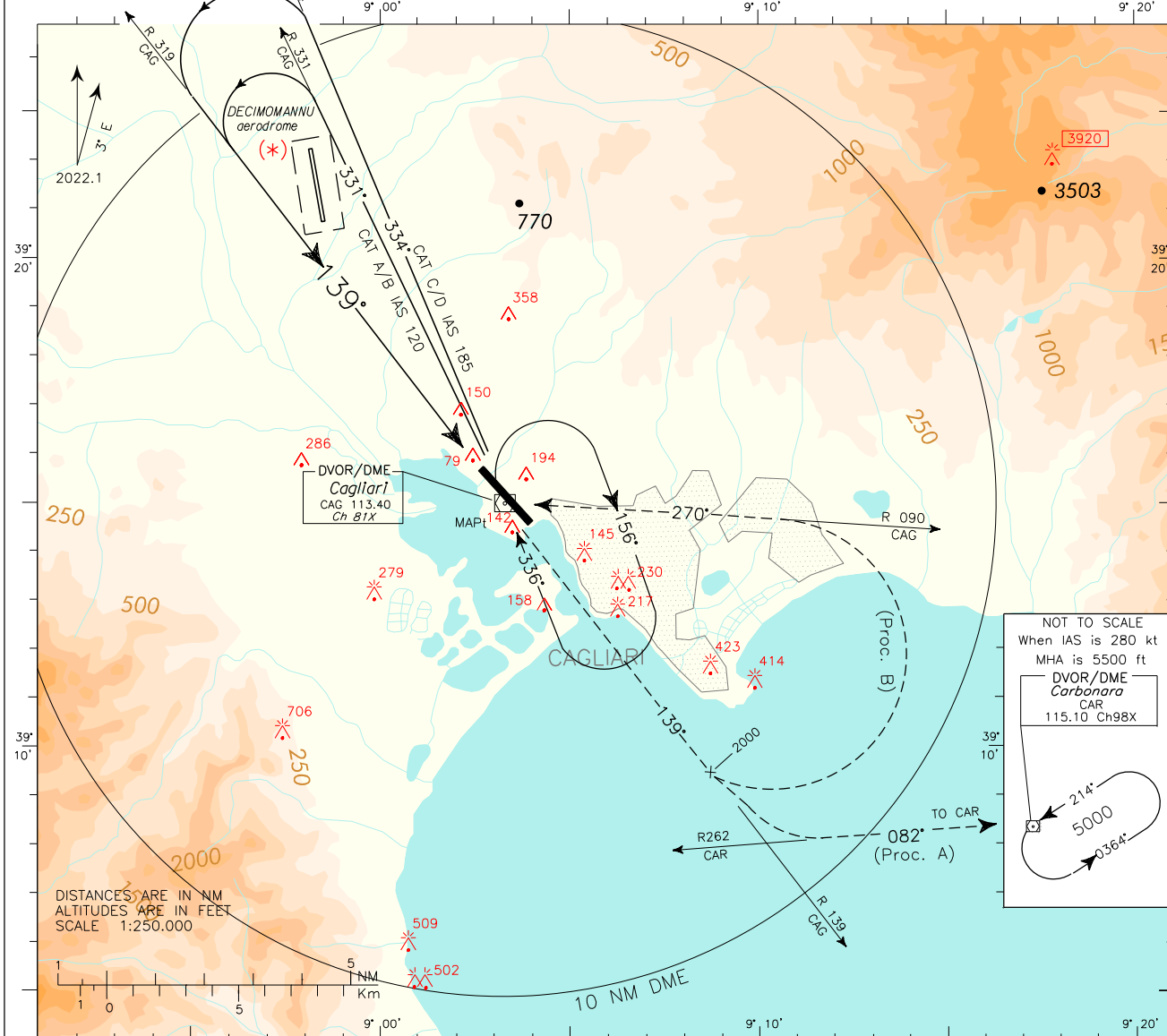


ICAO – INSTRUMENT APPROACH CHART

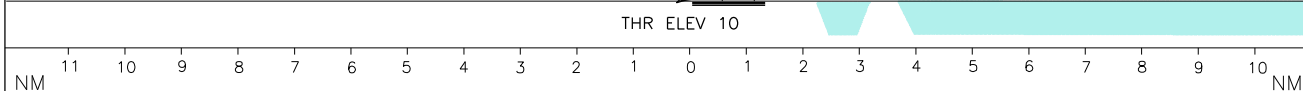
<p>(*) <b>WARNING:</b> Pilots shall pay attention to DECIMOMANNU aerodrome North-West of the field – distance 6 NM.</p>	APP Cagliari APP	119.275 (122.950)	AD ELEV	L I E E	CAGLIARI/ ELMAS VOR-Y RWY 14 (ATC DISCRETION)
	Cagliari Radar	(122.950)			
	TWR Elmas TWR	120.605 122.100			
	ATIS Cagliari Arrival and departure Info	127.055			



TRANSITION ALT 6000

MISSED APPROACH: (PROC. A): Proceed on track 139° (R139 CAG VOR) climbing to 5000 ft. Leaving 2000 ft turn left to intercept and follow R262 CAR VOR (TR 082°) until joining CAR VOR holding pattern.  
-Turn IAS MAX 250 kt.  
-MNM climb gradient 3.5%; or, if unable, follow M. A. TYPE B Procedure and advise ATC.

(PROC. B): Proceed on track 139° (R 139 CAG VOR) climbing to 4000 ft.  
Leaving 2000 ft turn left to intercept and follow R 090 CAG VOR (TR 270°) reaching CAG VOR at 4000 ft.  
- Turn IAS MAX 250 kt.



NM		11	10	9	8	7	6	5	4	3	2	1	0	1	2	3	4	5	6	7	8	9	10	NM
OCA (OCH)		A	B	C	D	CIRCLING SECTOR																		
STRAIGHT IN APPROACH	VOR					930 (920)																		
	CIRCLING					1100 (1090)																		
		MNM SECT ALT		CAG		VOR																		

Edited by AM-CIGA