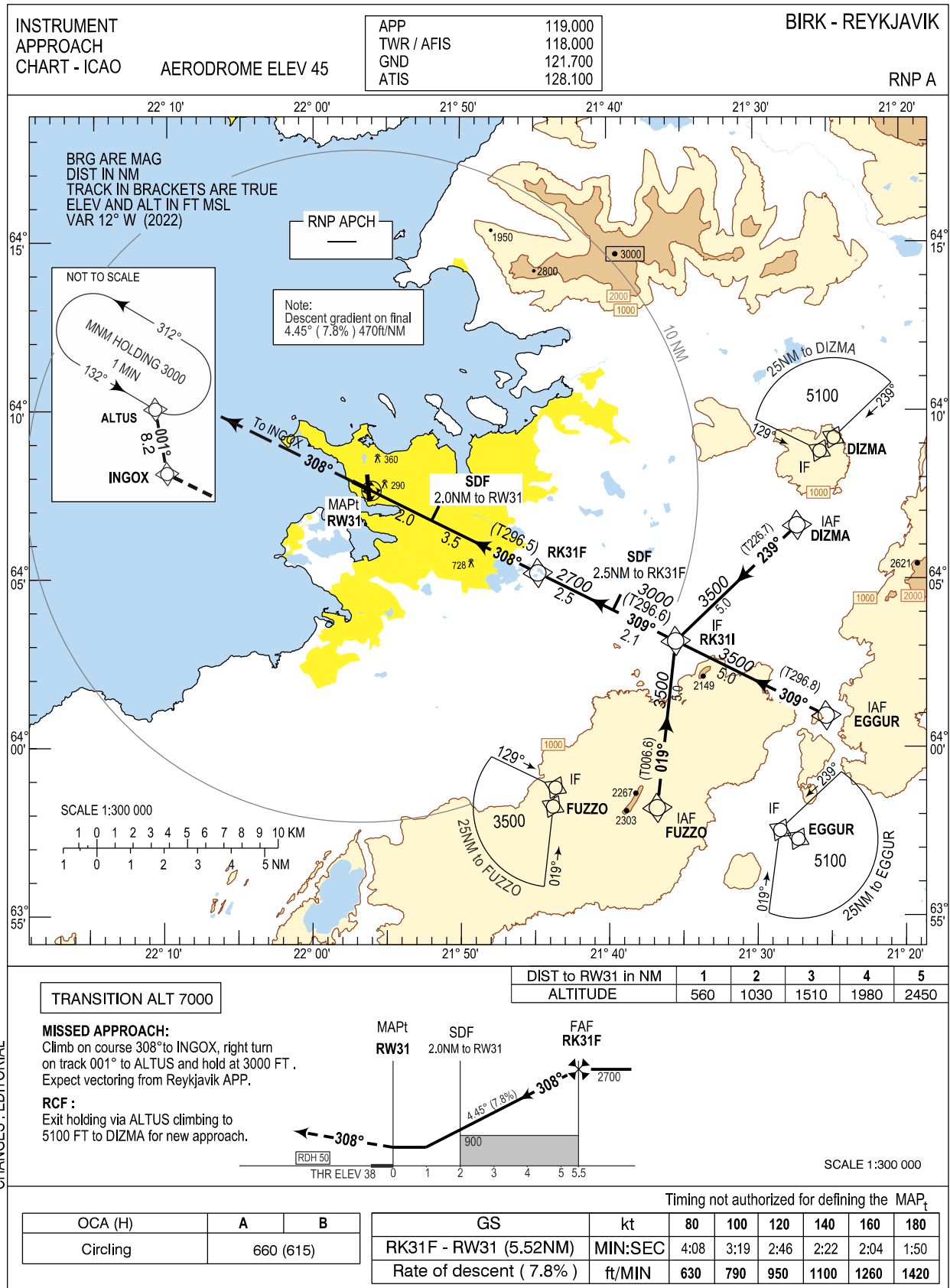


Reykjavik RNP A Instrument Approach Chart - ICAO



BIRK RNP A
Recommended Coding Table

Serial Number	Path Descriptor	Waypoint Identifier	Fly-over	Course / Track °M(°T)	Magnetic Variation	Distance	Turn Direction	Altitude (ft)	Speed (kt/h)	VPA/TCH	Navigation Specification
010	IF	DIZMA	-		+12.0			A5100+			RNP APCH
020	TF	RK31I	-	239 (226.7)	+12.0	5.0	R	A3500+			RNP APCH
010	IF	EGGUR	-		+12.0			A5100+			RNP APCH
020	TF	RK31I	-	309 (296.8)	+12.0	5.0		A3500+			RNP APCH
010	IF	FUZZO	-		+12.0			A3500+			RNP APCH
020	TF	RK31I	-	019 (006.6)	+12.0	5.0	L	A3500+			RNP APCH
030	TF	RK31F	-	309 (296.6)	+12.0	4.6		A2700+		4.45°	RNP APCH
040	TF	RW31	Y	308 (296.5)	+12.0	5.5				4.45°/ 50	RNP APCH
050	CF	INGOX		308 (296.3)	+12.0	10.4					RNP APCH
060	TF	ALTUS	-	001 (349.3)	+12.0	8.2	R				RNP APCH
070	HM	ALTUS	Y	132 (120.1)	+12.0		L	A3000			RNP APCH

Waypoint coordinates

Waypoint Identifier	Coordinates		Display	
	LAT	LON	LAT	LON
DIZMA	640636.37N	0212709.07W	N 6406.61	W 02127.15
EGGUR	640056.89N	0212516.82W	N 6400.95	W 02125.28
FUZZO	635814.21N	0213644.65W	N 6358.24	W 02136.74
RK31I	640311.24N	0213526.18W	N 6403.19	W 02135.44
RK31F	640513.57N	0214445.33W	N 6405.23	W 02144.76
RW31	640740.43N	0215602.09W	N 6407.67	W 02156.03
INGOX	641215.30N	0221725.27W	N 6412.26	W 02217.42
ALTUS	642018.09N	0222056.40W	N 6420.30	W 02220.94