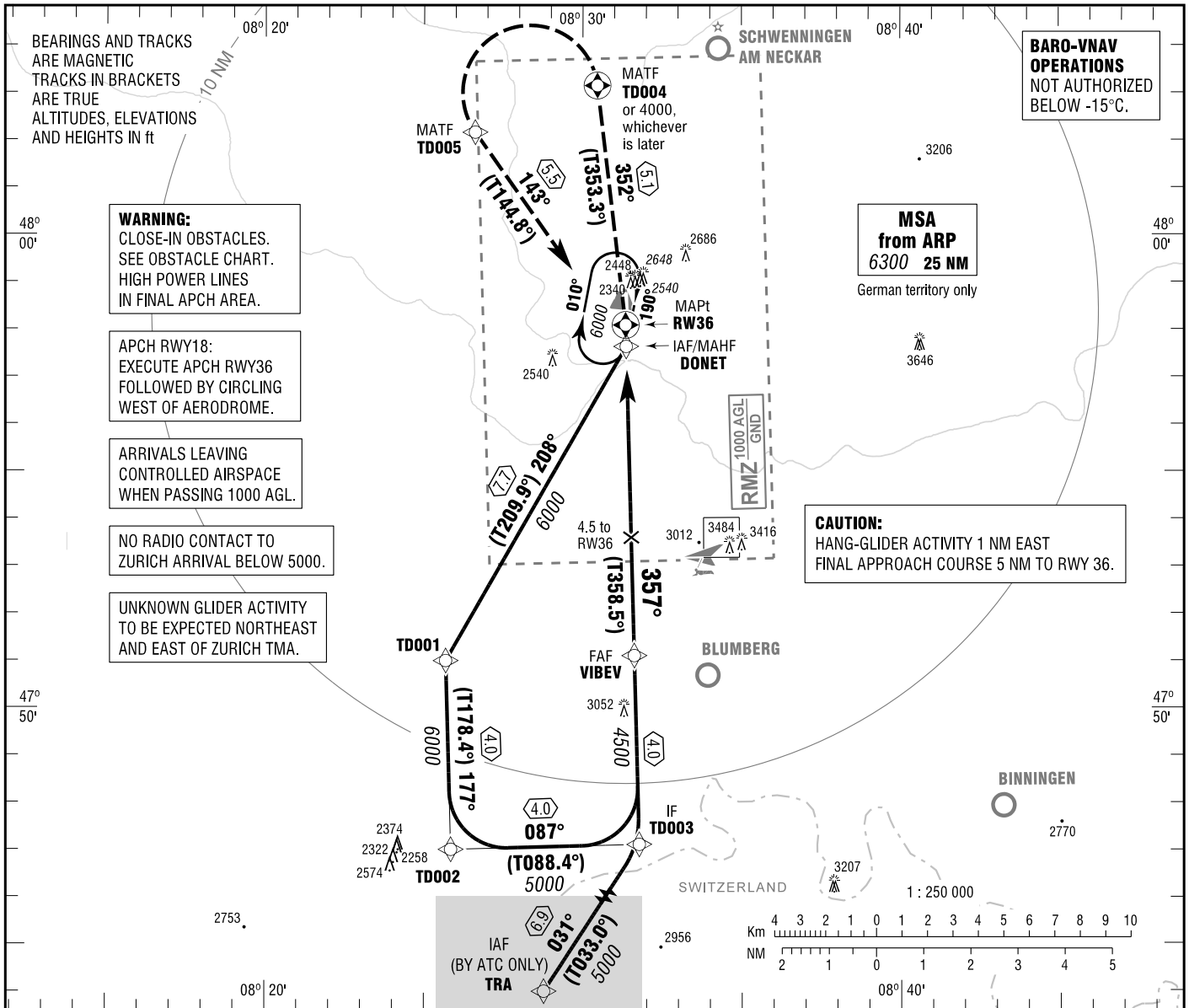


**INSTRUMENT
APPROACH
CHART - ICAO**

VAR 2° E
ELEV 2231
OCH RELATED TO
THR 36 ELEV 2219

ZURICH ARRIVAL 135.230
DONAUESCHINGEN INFORMATION 126.690

DONAUESCHINGEN-VILLINGEN
RNAV (GPS) RWY 36
EGNOS CH 63834 E36A



WARNING:
CLOSE-IN OBSTACLES.
SEE OBSTACLE CHART.
HIGH POWER LINES
IN FINAL APCH AREA.

APCH RWY18:
EXECUTE APCH RWY36
FOLLOWED BY CIRCLING
WEST OF AERODROME.

ARRIVALS LEAVING
CONTROLLED AIRSPACE
WHEN PASSING 1000 AGL.

NO RADIO CONTACT TO
ZURICH ARRIVAL BELOW 5000.

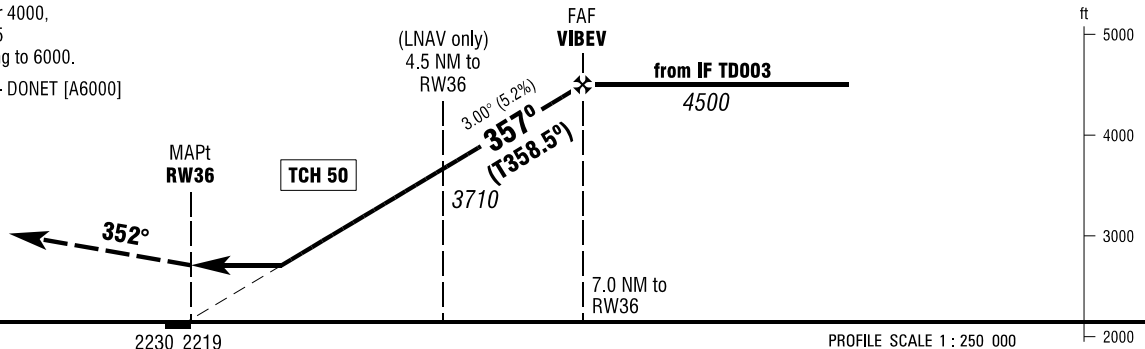
UNKNOWN GLIDER ACTIVITY
TO BE EXPECTED NORTHEAST
AND EAST OF ZURICH TMA.

MSA
from ARP
6300 25 NM
German territory only

CAUTION:
HANG-GLIDER ACTIVITY 1 NM EAST
FINAL APPROACH COURSE 5 NM TO RWY 36.

MISSED APPROACH PROCEDURE

Climb on track 352° to TD004 or 4000,
whichever is later; LT, via TD005
on track 143° to DONET, climbing to 6000.
TD004 - [A4000+; L] - TD005 - DONET [A6000]



OCA(OCH)	A	B
LNAV	2790 (570)	2900 (680)
LNAV/VNAV	2590 (370)	2610 (390)
LPV	2790 (570)	2900 (680)
CIRCLING* OCH RELATED TO AD ELEV	2960 (730)	2960 (730)

*WEST OF AERODROME ONLY.

DIST THR / RW36	2	3	4	5	6
ALTITUDE	2910	3230	3550	3870	4180

Timing not authorized for defining the MAPt.

GS	kt	80	100	120	140
VIBEV - RW36 (7.0 NM)	MIN:SEC	5:15	4:12	3:30	3:00
Rate of descent (5.2%)	ft / MIN	420	530	640	740

Correction: Callsign.