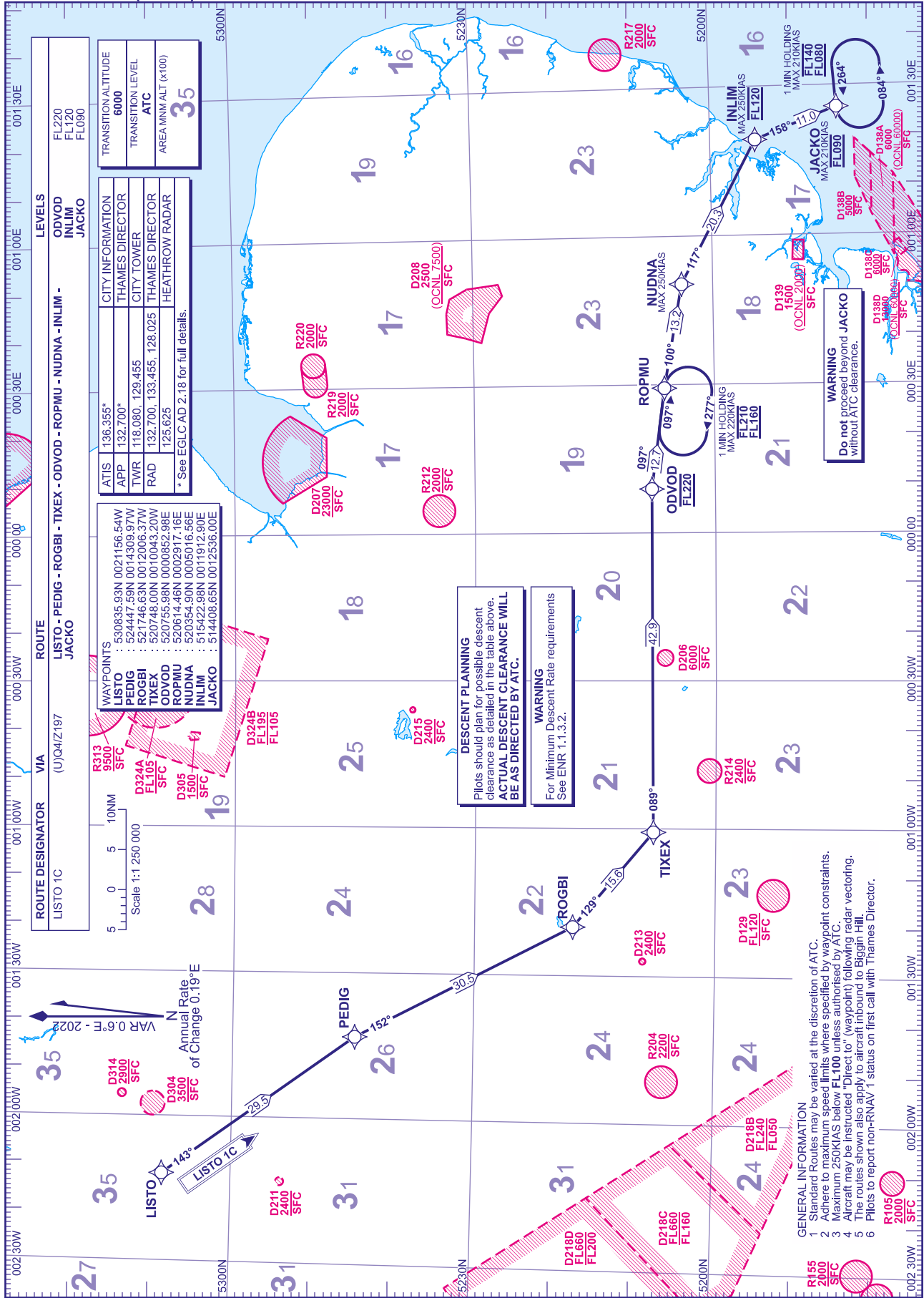


**RNAV5 (VOR/DME, DME/DME or GNSS)  
STANDARD ARRIVAL CHART -  
INSTRUMENT (STAR) - ICAO**

DISTANCES IN STATUTE MILES  
TRACKS ARE MAGNETIC  
ALTITUDES AND ELEVATIONS ARE IN FEET

**LONDON CITY  
RWY 09/27  
LISTO 1C**



LEVELS	
FL220	ODVOD
FL120	INLIM
FL090	JACKO
TRANSITIONAL ALTITUDE 6000	
TRANSITION LEVEL ATC	
AREA MNM ALT (x100) <b>35</b>	

CITY INFORMATION	
ATIS	136.355*
APP	132.700*
TWR	118.080, 129.455
CITY TOWER	132.700, 133.455, 128.025
THAMES DIRECTOR	125.625
HEATHROW RADAR	
* See EGLC AD 2.18 for full details.	

WAYPOINTS	
LISTO	: 530835.93N 0021156.64W
PEDIG	: 524447.59N 0014309.97W
ROGBI	: 521746.63N 0012006.37W
TIXEX	: 520746.00N 0010043.20W
ODVOD	: 520755.98N 0000852.98E
ROPMU	: 520614.46N 0002917.16E
NUDNA	: 520354.90N 0005016.56E
INLIM	: 515422.98N 0011912.90E
JACKO	: 514408.65N 0012536.00E

**DESCENT PLANNING**  
Pilots should plan for possible descent clearance as detailed in the table above.  
**ACTUAL DESCENT CLEARANCE WILL BE AS DIRECTED BY ATC.**

**WARNING**  
For Minimum Descent Rate requirements  
See ENR 1.1.3.2.

- GENERAL INFORMATION**
- Standard Routes may be varied at the discretion of ATC.
  - Adhere to maximum speed limits where specified by waypoint constraints.
  - Maximum 250KIAS below FL100 unless authorised by ATC.
  - Aircraft may be instructed "Direct to" (waypoint) following radar vectoring.
  - The routes shown also apply to aircraft inbound to Biggin Hill.
  - Pilots to report non-RNAV 1 status on first call with Thames Director.

**WARNING**  
Do not proceed beyond JACKO without ATC clearance.