

(CONLE5.CONLE) 24193

AL-5222 (FAA)

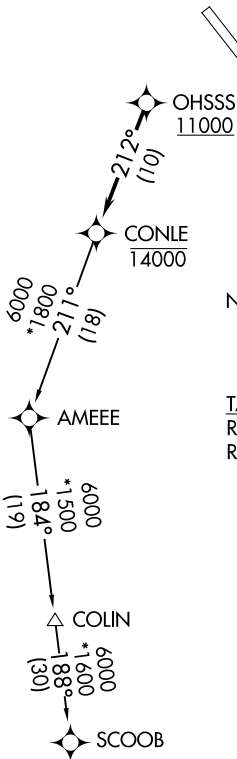
MARTIN STATE (MTN)
BALTIMORE, MARYLAND

CONLE FIVE DEPARTURE (RNAV)

POTOMAC DEP CON
119.0 282.275
ATIS
124.925
GND CON
121.8 253.4
MARTIN TOWER ★
121.3 (CTAF) 254.425

RNAV 1-DME/DME/IRU or GPS.
RADAR required.

**TOP ALTITUDE:
ASSIGNED BY ATC**

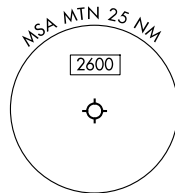


NOTE: Jet aircraft only.

TAKEOFF MINIMUMS:

Rwy 15: Standard.

Rwy 33: Standard with minimum climb of 215' per NM to 1300.



NOTE: Chart not to scale.

NE-3, 20 MAR 2025 to 17 APR 2025

NE-3, 20 MAR 2025 to 17 APR 2025



DEPARTURE ROUTE DESCRIPTION

Climb on assigned heading for RADAR vectors to cross OHSSS at or above 11000, then on track 212° to cross CONLE at or below 14000, then on assigned transition. Maintain ATC assigned altitude. Expect clearance to filed altitude within 10 minutes after departure.

COLIN TRANSITION (CONLE5.COLIN)

SCOOB TRANSITION (CONLE5.SCOOB)

CONLE FIVE DEPARTURE (RNAV)
(CONLE5.CONLE) 11 JUL 24

BALTIMORE, MARYLAND
MARTIN STATE (MTN)