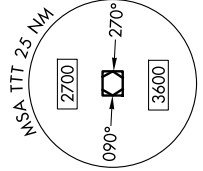


BACHMAN ONE DEPARTURE

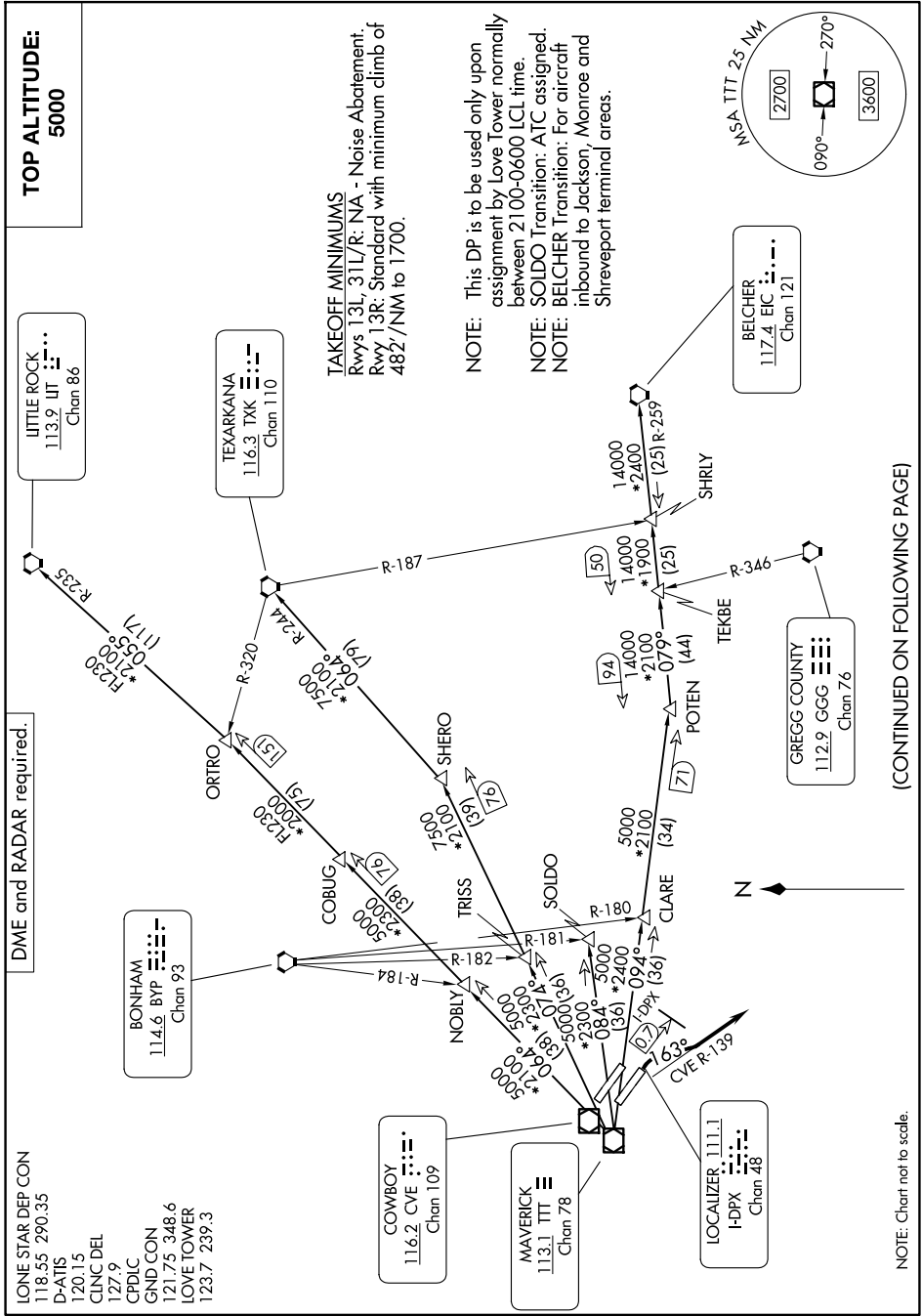
**TOP ALTITUDE:
5000**

TAKEOFF MINIMUMS
Rwys 13L, 31L/R: NA - Noise Abatement.
Rwy 13R: Standard with minimum climb of 482'/NM to 1700.

NOTE: This DP is to be used only upon assignment by Love Tower normally between 2100-0600 LCL time.
NOTE: SOLDO Transition: ATC assigned.
NOTE: BELCHER Transition: For aircraft inbound to Jackson, Monroe and Shreveport terminal areas.



SC-2, 20 MAR 2025 to 17 APR 2025



DME and RADAR required.

- LONE STAR DEP CON 118.55 290.35
- D-ATIS 120.15
- CLINC DEL 127.9
- CPDLC 121.75 348.6
- GND CON 123.7 239.3
- LOVE TOWER

BONHAM
114.6 BYP
Chan 93

TEXARKANA
116.3 TXK
Chan 110

COWBOY
116.2 CVE
Chan 109

MAVERICK
113.1 TTT
Chan 78

LOCALIZER 111.1
I-DPX
Chan 48

GREGG COUNTY
112.9 GGG
Chan 76

BELCHER
117.4 EIC
Chan 121

(CONTINUED ON FOLLOWING PAGE)

NOTE: Chart not to scale.

SC-2, 20 MAR 2025 to 17 APR 2025