

(SNAAG.NEELL7) 24305

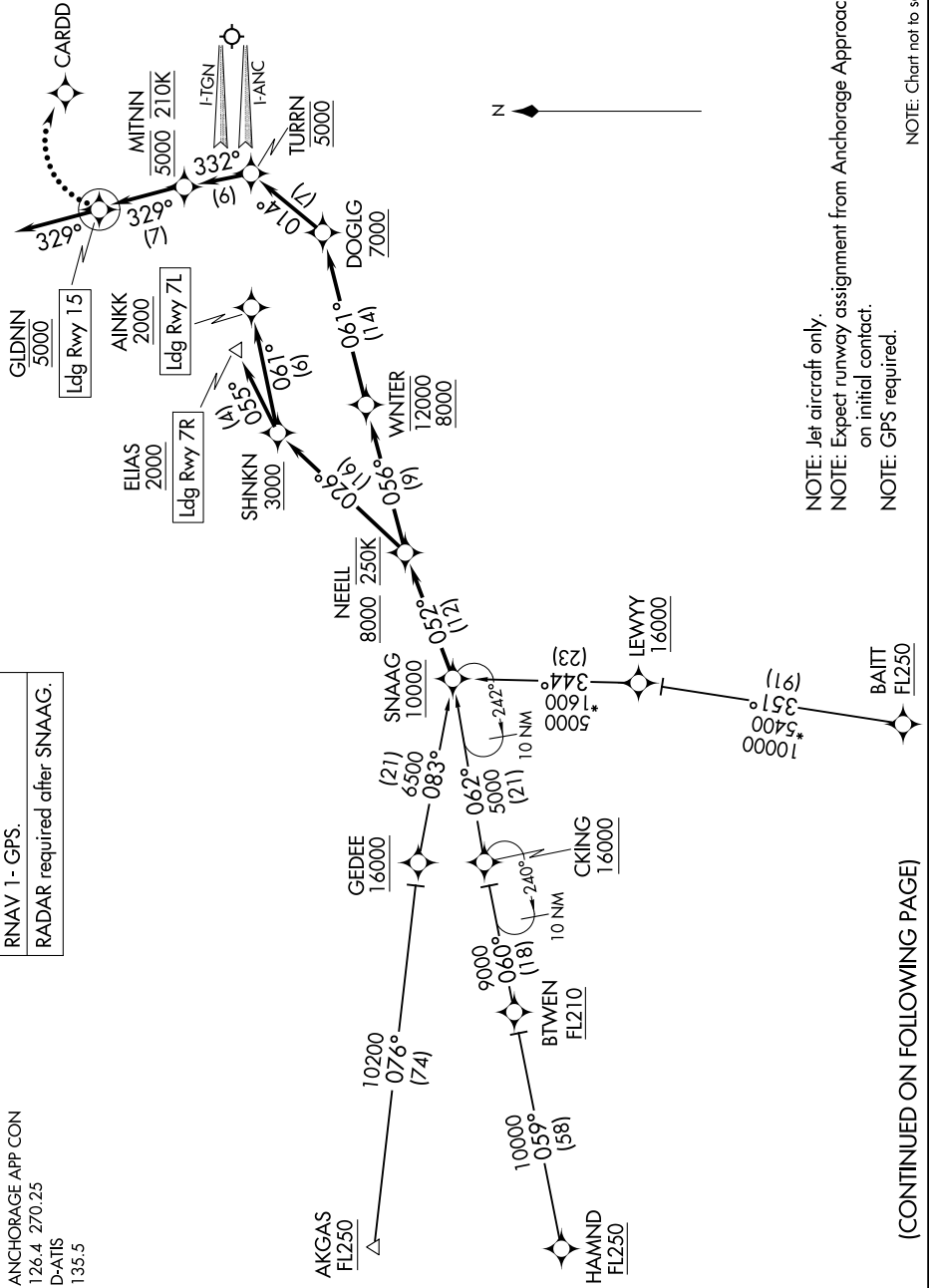
NEELL SEVEN ARRIVAL (RNAV)

TED STEVENS ANCHORAGE INTL (ANC)(PANC)
AL-1500 (FAA) ANCHORAGE, ALASKA

AK, 20 FEB 2025 to 17 APR 2025

ANCHORAGE APP CON
126.4 270.25
D-ATIS
135.5

RNAV 1- GPS.
RADAR required after SNAAG.



NOTE: Jet aircraft only.
NOTE: Expect runway assignment from Anchorage Approach on initial contact.
NOTE: GPS required.

NOTE: Chart not to scale.

(CONTINUED ON FOLLOWING PAGE)

AK, 20 FEB 2025 to 17 APR 2025

NEELL SEVEN ARRIVAL (RNAV)

(SNAAG.NEELL7) 31OCT24

TED STEVENS ANCHORAGE INTL (ANC)(PANC)
ANCHORAGE, ALASKA