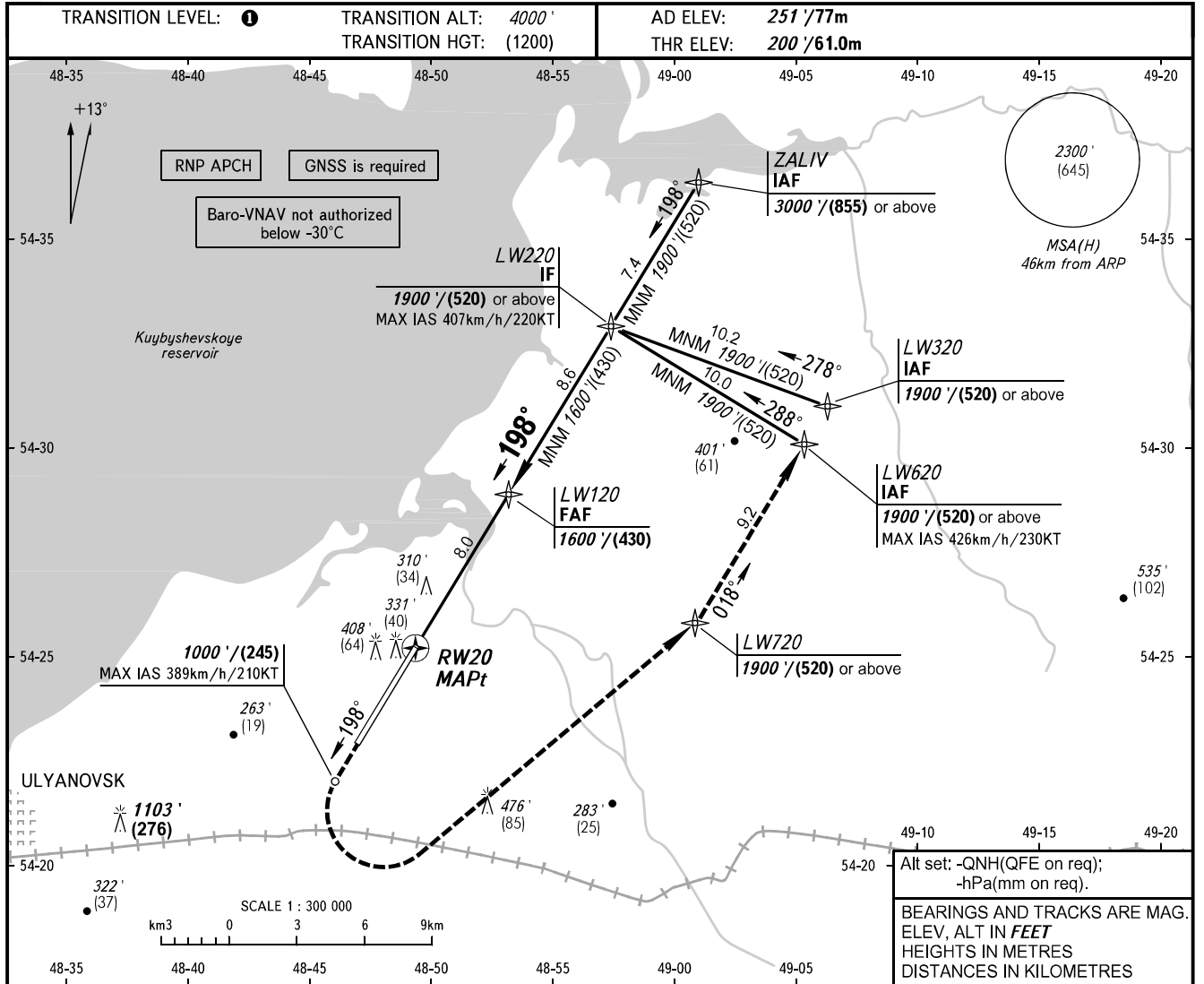


**INSTRUMENT  
APPROACH  
CHART - ICAO**

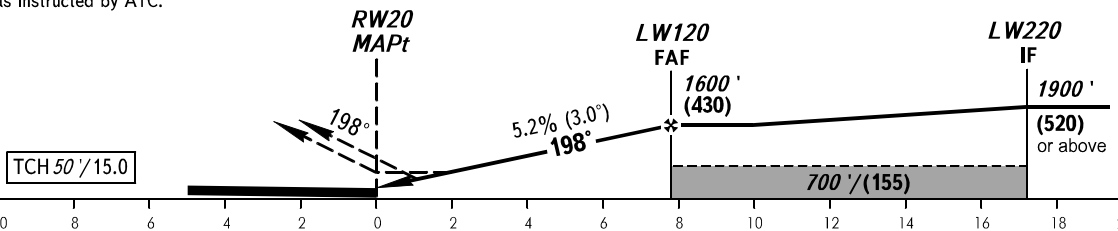
VOSTOCHNY TOWER 124.200

**ULYANOVSK, RUSSIA**  
VOSTOCHNY  
RNP RWY 20



**MISSED APPROACH**  
Climb straight ahead to 1000'/(245),  
turn LEFT to LW720 climbing to  
1900'/(520) or above, then to  
LW620 or as instructed by ATC.

DIST to RW20	1.9	3.0	5.0	7.0
ALTITUDE/HEIGHT	570'/(113)	770'/(174)	1110'/(278)	1450'/(381)



OCA(H)		A	B	C	D							
Straight-in	<b>LNAV</b>	570' (370') (113)	570' (370') (113)	570' (370') (113)	570' (370') (113)							
	<b>LNAV/VNAV</b>	463' (263') (81)	473' (273') (84)	482' (282') (86)	555' (355') (110)							
Circling		680' (420') (135)	750' (500') (155)	870' (600') (190)	950' (700') (215)							
GROUND SPEED		km/h		150	180	210	240	270	300	330	360	390
		kt		81	97	113	130	146	162	178	194	211
RATE OF DESCENT		m/s		2.2	2.6	3.0	3.5	3.9	4.3	4.8	5.2	5.6
		ft/min		427	512	597	682	768	853	938	1024	1109

**1** TRANSITION LEVEL:  
- FL050 when QNH is 977 hPa (733mm mercury column) or above;  
- FL060 when QNH is less than 977 hPa (733mm mercury column).  
**WARNING**  
Visual manoeuvring north-west of the aerodrome  
is PROHIBITED.