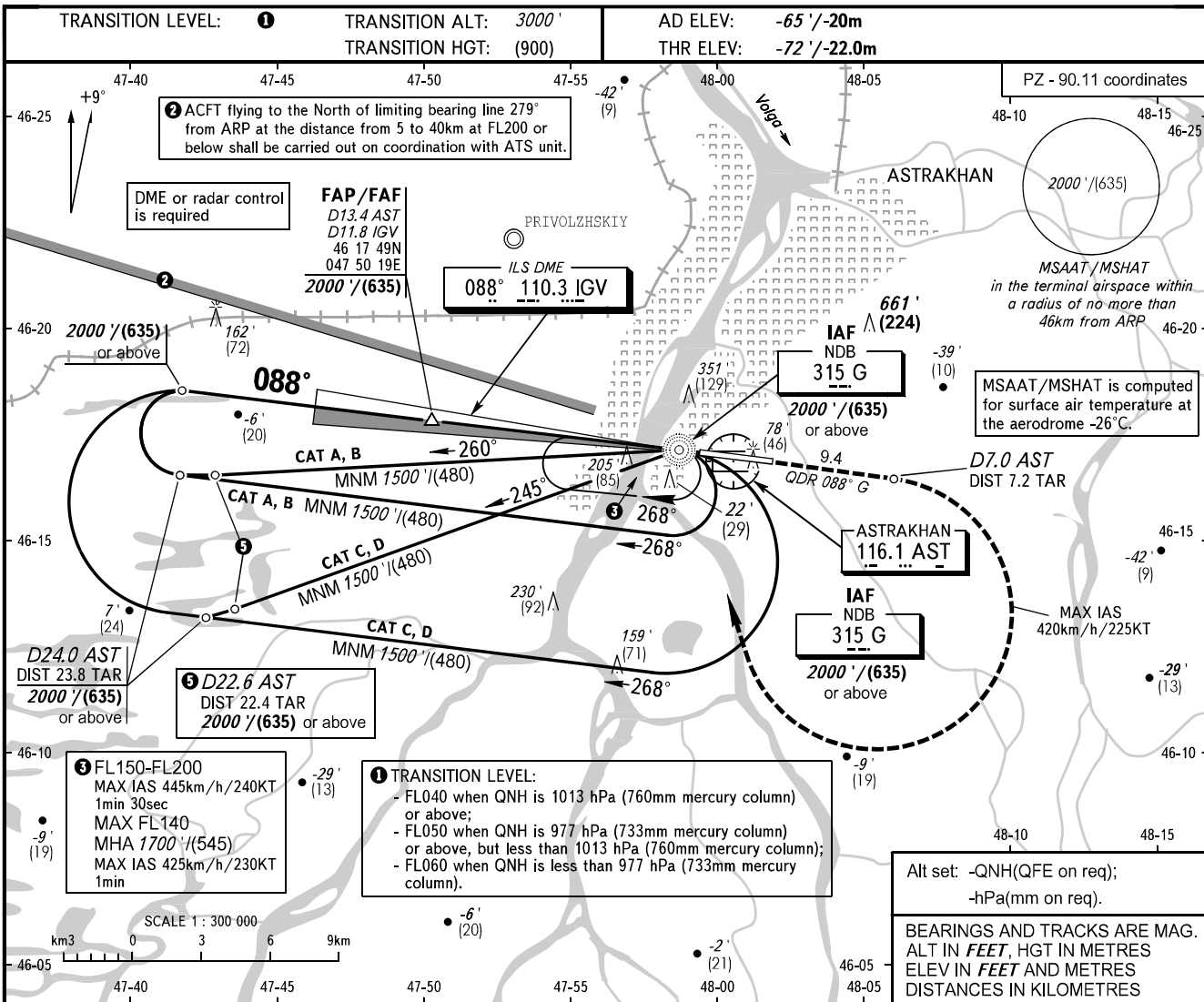


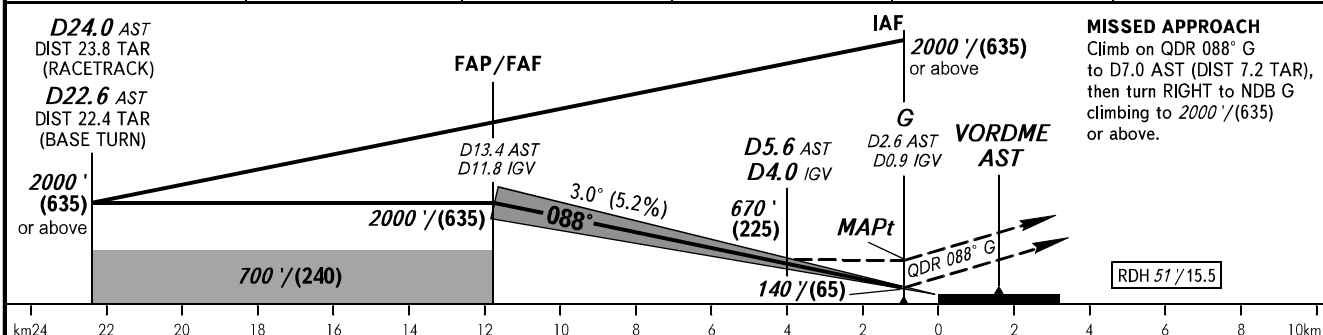
**INSTRUMENT
APPROACH
CHART - ICAO**

RADAR 120.600
TOWER 118.600

**ASTRAKHAN, RUSSIA
ASTRAKHAN
ILS X CAT I, LOC X RWY 09**



DME IGV	10.0	8.0	6.0	4.0	2.0
ALTITUDE/HEIGHT	1690'/(540)	1350'/(435)	1010'/(330)	670'/(225)	320'/(120)



OCA(H)		A	B	C	D				
Straight-in Approach	CAT I	128° (200') 39 (60)	128° (200') 39 (60)	128° (200') 39 (60)	128° (200') 39 (60)				
	LOC	350° (430') 110 (130)	350° (430') 110 (130)	350° (430') 110 (130)	350° (430') 110 (130)				
Circling		380° (450') 120 (140)	500° (570') 155 (175)	600° (670') 185 (205)	630° (700') 195 (215)				
GROUND SPEED	km/h	150	180	210	240	270	300	330	360
	kt	81	97	113	130	146	162	178	195
RATE OF DESCENT	m/s	2.2	2.6	3.0	3.5	3.9	4.3	4.8	5.2
	ft/min	427	512	597	682	768	853	938	1024

NOTE:
1. TAR distance is indicated from ARP.
2. MAPt at NDB G. Timing not authorized for defining MAPt.
3. ILS DME IGV reads zero at RWY 09 THR.

WARNING
Visual manoeuvring to the north of AD is PROHIBITED.

276° 079°

CHANGE: RDH