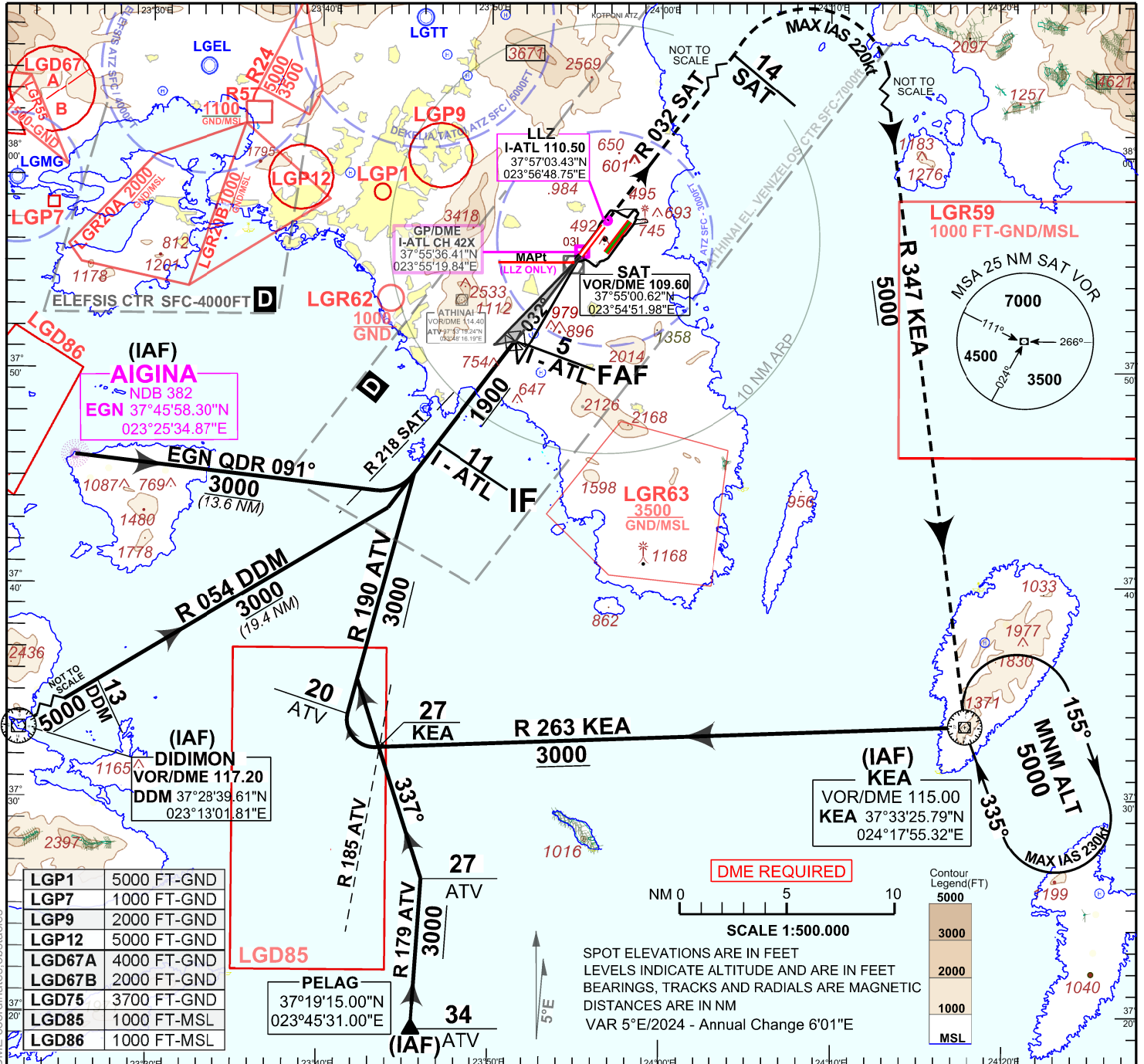


ICAO DOC 8168, VOL. II, 6th ed. Amend 8

Change: Rate of descent - LLZ recommended ALT tables, SAT - IATL GP/DME coordinates, obstacles



LGP1	5000 FT-GND
LGP7	1000 FT-GND
LGP9	2000 FT-GND
LGP12	5000 FT-GND
LGD67A	4000 FT-GND
LGD67B	2000 FT-GND
LGD75	3700 FT-GND
LGD85	1000 FT-MSL
LGD86	1000 FT-MSL

PELAG
37°19'15.00"N
023°45'31.00"E

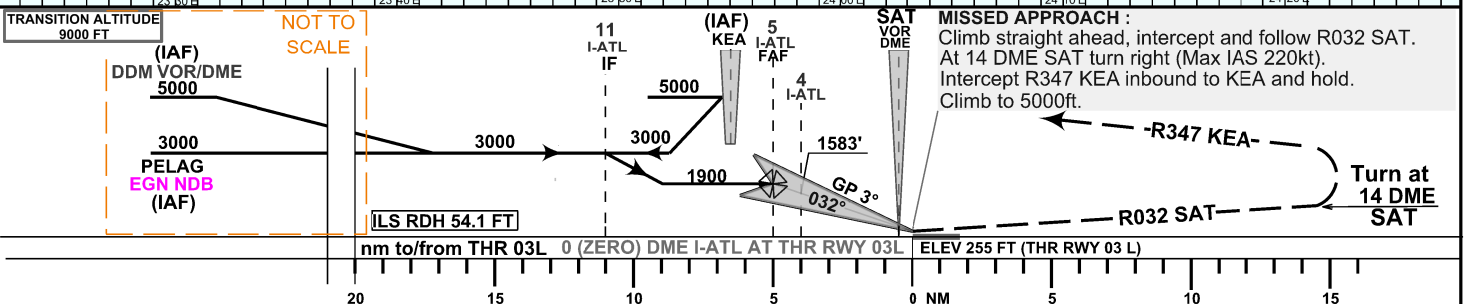
DME REQUIRED

SCALE 1:500.000

SPOT ELEVATIONS ARE IN FEET
LEVELS INDICATE ALTITUDE AND ARE IN FEET
BEARINGS, TRACKS AND RADIALS ARE MAGNETIC
DISTANCES ARE IN NM
VAR 5°E/2024 - Annual Change 6'01"E

Contour Legend (FT)

5000
3000
2000
1000
MSL



MISSED APPROACH :
Climb straight ahead, intercept and follow R032 SAT.
At 14 DME SAT turn right (Max IAS 220kt).
Intercept R347 KEA inbound to KEA and hold.
Climb to 5000ft.

OCA / H		A	B	C	D	D _L
STRAIGHT-IN APPROACH (ALT/HEIGHT W.R.T. THR RWY 03L ELEVATION)	CAT I	FT	455 / 200			
	CAT II	FT	355 / 100			
	LOC ONLY	FT	1270 / 1015			
CIRCLING (ALT/HEIGHT W.R.T. A/D ELEVATION)	FT	1200/892	1300/992	N / A		

Rate of descent

nm/h	100	135	160	185
ft/min	530	720	850	980

LLZ RECOMMENDED ALT

DISTANCE I-ATL DME	4	3	2
ALTITUDE 5.2% APPROACH	1590	1270	950