

LOC/DME I-PKQ 110.3 Chan 40	APP CRS 356°	Rwy Idg 35C 35L TDZE 563 564 Apt Elev 607 607
--	------------------------	--

ILS or LOC RWY 35C

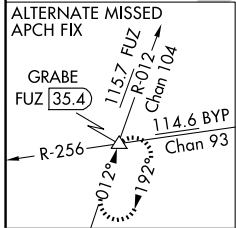
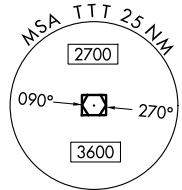
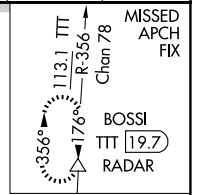
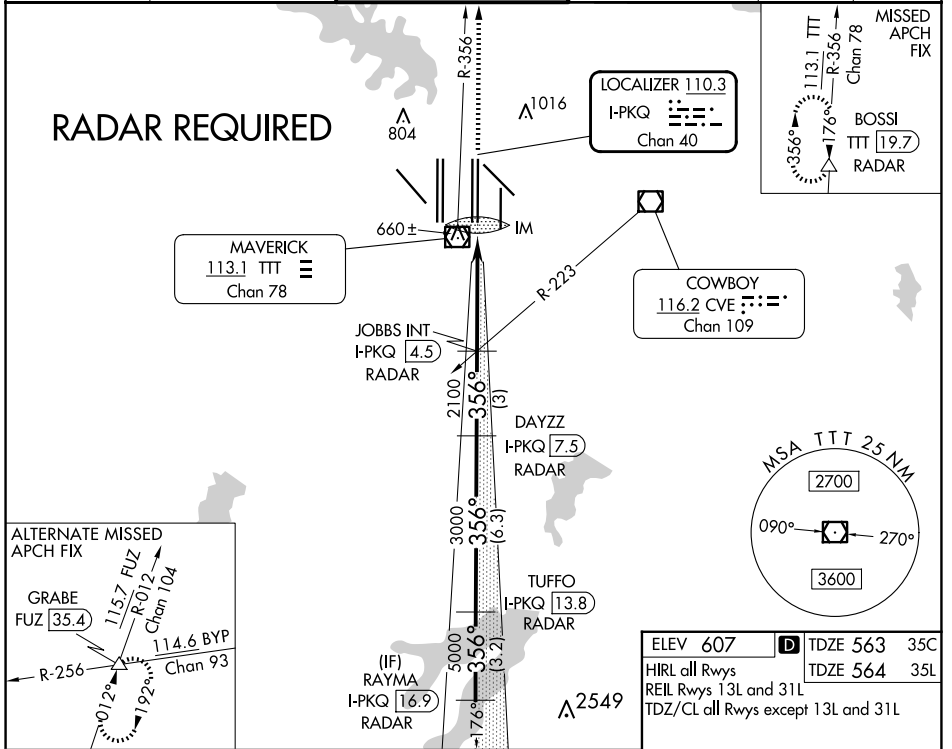
DALLAS-FORT WORTH INTL (DFW)

▼ Inoperative table does not apply to Sidestep Rwy 35L Cats A and B. DME or RADAR required. Simultaneous approach authorized with Rwy 35R, Rwy 36L/R.

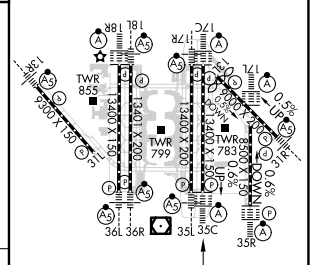
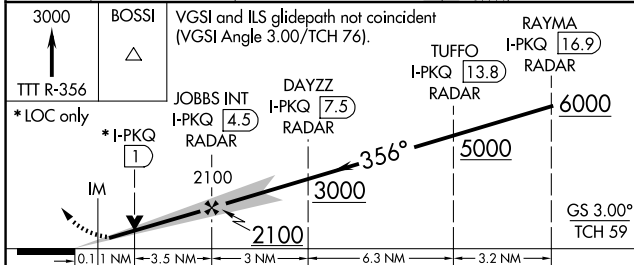


MISSED APPROACH: Climb to 3000 on TTT VOR/DME R-356 to BOSSI/TTT 19.7 DME/RADAR and hold.

D-ATIS ARR 123.775 DEP 135.925	LONE STAR APP CON 127.075	DFW TOWER 126.55 127.5 EAST 124.15 134.9 WEST	GND CON 121.65 121.8 EAST 121.85 WEST	CLNC DEL 128.25	CPDLC
--	-------------------------------------	---	---	---------------------------	-------



ELEV 607	D TDZE 563 35C
HIRL all Rwys	TDZE 564 35L
REIL Rwys 13L and 31L	
TDZ/CL all Rwys except 13L and 31L	



CATEGORY	A	B	C	D
S-ILS 35C	763/18		200 (200-½)	
S-LOC 35C	1000/24	437 (400-½)	1000/40	437 (400-¾)
SIDESTEP 35L	1000/55		436 (400-1)	
			1000-1½	436 (400-1½)

FAF to MAP 4.6 NM					
Knots	60	90	120	150	180
Min:Sec	4:36	3:04	2:18	1:50	1:32

SC-2, 20 MAR 2025 to 17 APR 2025

SC-2, 20 MAR 2025 to 17 APR 2025