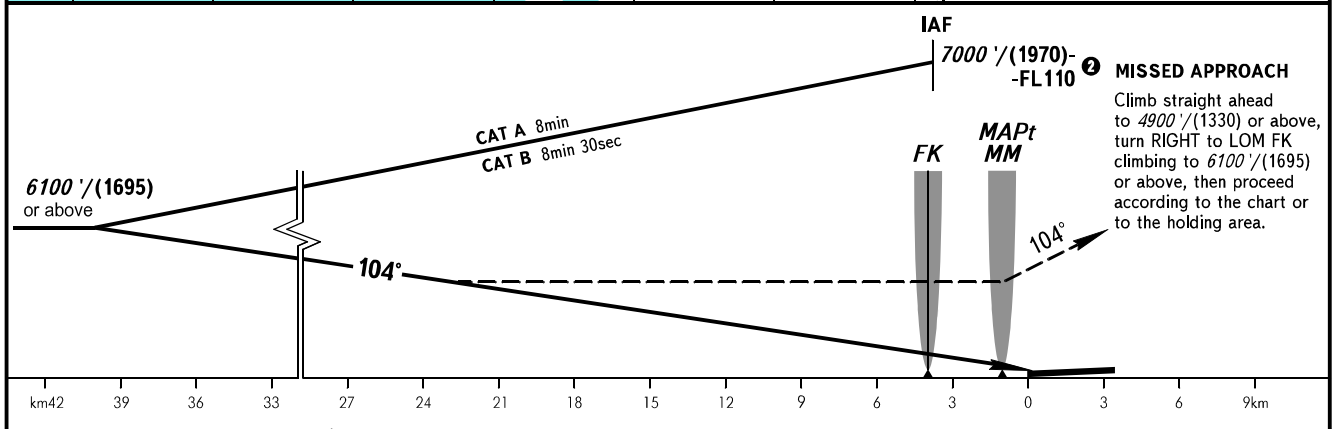
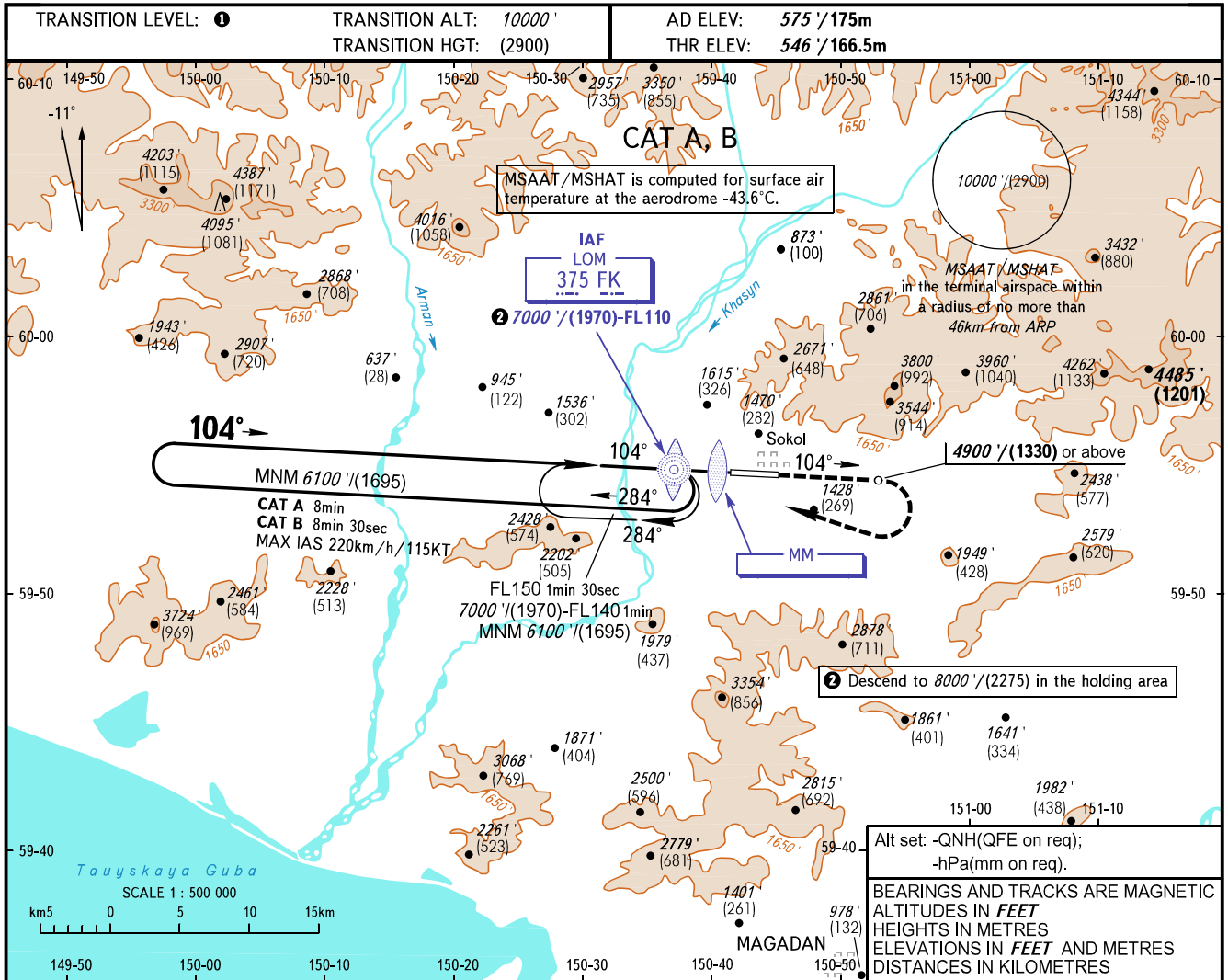


**INSTRUMENT  
APPROACH  
CHART - ICAO**

APPROACH **119.300**  
TOWER **120.800**

**MAGADAN, RUSSIA**  
SOKOL  
NDB B RWY 10



OCA(H)		A	B	C	D
Straight-in Approach					
Circling		3670' (3100') (950)	4020' (3450') (1050)		

**1 TRANSITION LEVEL:**  
- FL 110 when QNH is 1013 hPa (760mm mercury column) or above;  
- FL 120 when QNH is 977 hPa (733mm mercury column) or above, but less than 1013 hPa (760mm mercury column);  
- FL 130 when QNH is less than 977 hPa (733mm mercury column).

**WARNING:**  
1. Turn before passing MAPt is PROHIBITED.  
2. MAPt at MM.  
Timing not authorized for defining MAPt.

**Visual manoeuvring to the North of AD is PROHIBITED.**