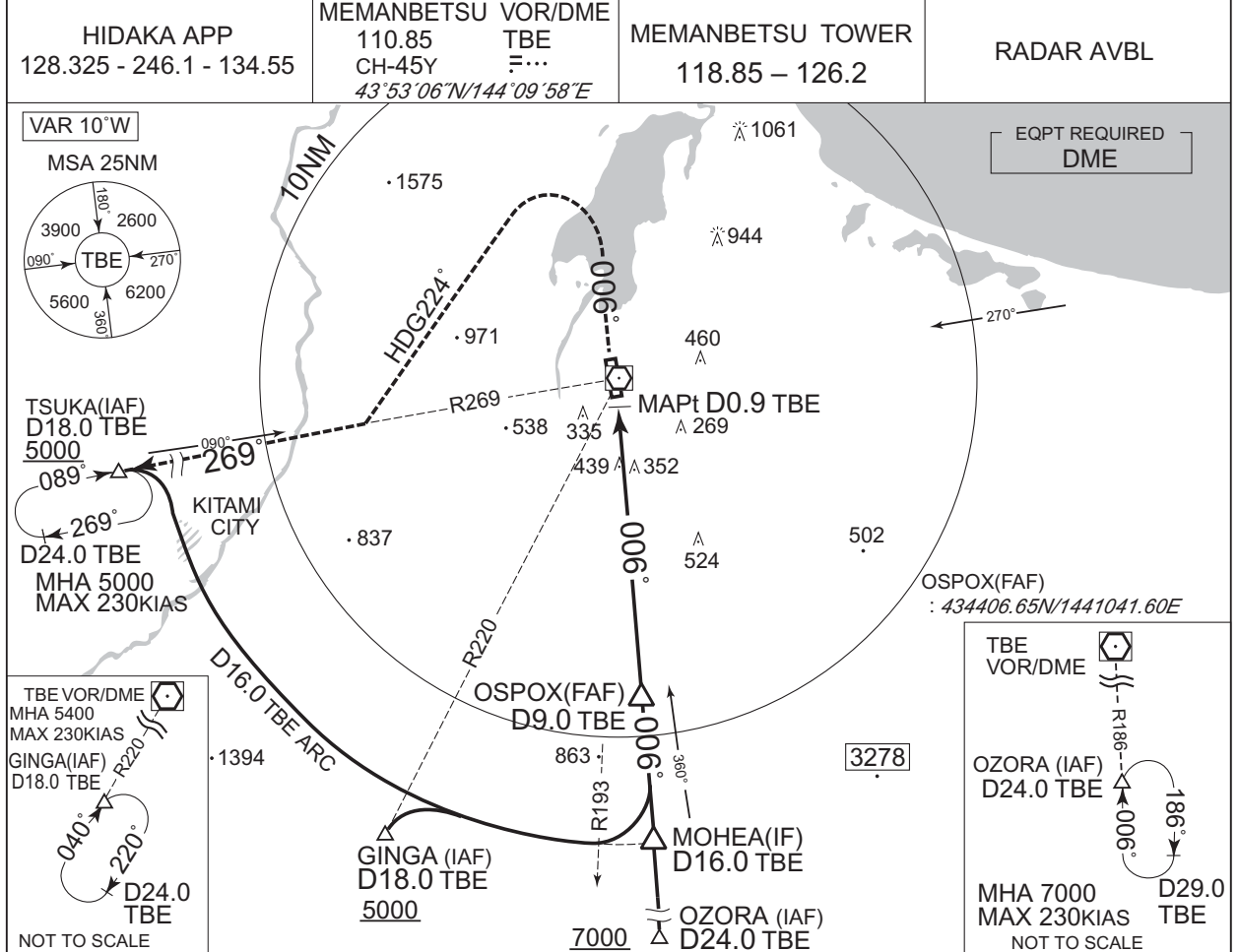


INSTRUMENT APPROACH CHART

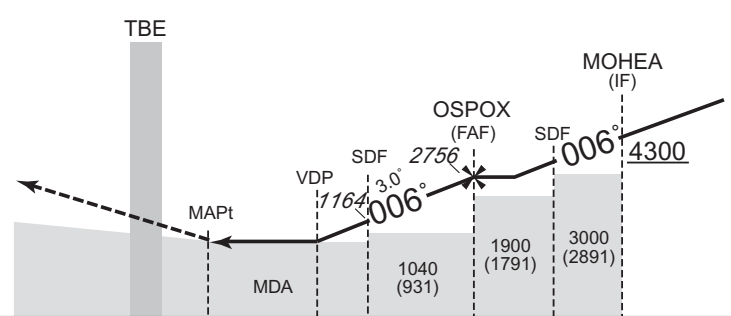
RJCM / MEMANBETSU VOR RWY36



|  |                      |      |     |      |      |      |      |      |      |
|--|----------------------|------|-----|------|------|------|------|------|------|
|  | NM to TBE            | MAPt | 3   | 4    | 5    | 6    | 7    | 8    | FAF  |
|  | ALT (3.0° APCH Path) | -    | 846 | 1164 | 1482 | 1801 | 2119 | 2438 | 2756 |

CHANGE : VAR. OSPOX established. JACOB abolished.

**MISSED APPROACH**  
Climb to 1000FT via TBE R006, turn left HDG224° to intercept and proceed via TBE R269 to TSUKA and hold at 5000FT. Contact HIDAKA APP.  
Timing not authorized for defining the MAPt.



|            |     |     |     |     |      |      |
|------------|-----|-----|-----|-----|------|------|
| DME to TBE | 0.9 | 2.6 | 4.0 | 9.0 | 13.0 | 16.0 |
| NM to THR  | 0   | 1.7 | 3.1 | 8.1 | 12.1 | 15.1 |

|        |               |         |              |           |
|--------|---------------|---------|--------------|-----------|
| MINIMA | THR elev. 135 |         | AD elev. 109 |           |
| CAT    |               |         | CIRCLING     |           |
|        | MDA(H)        | RVR/CMV | MDA(H)       | VIS       |
| A      | 690 (581)     | 1000    | 690 (581)    | 1600      |
| B      |               | 1200    |              |           |
| C      |               |         | 750 (641)    | 2400      |
| D      |               |         | 1600         | 760 (651) |