

**PANS-OPS
INSTRUMENT APPROACH CHART**

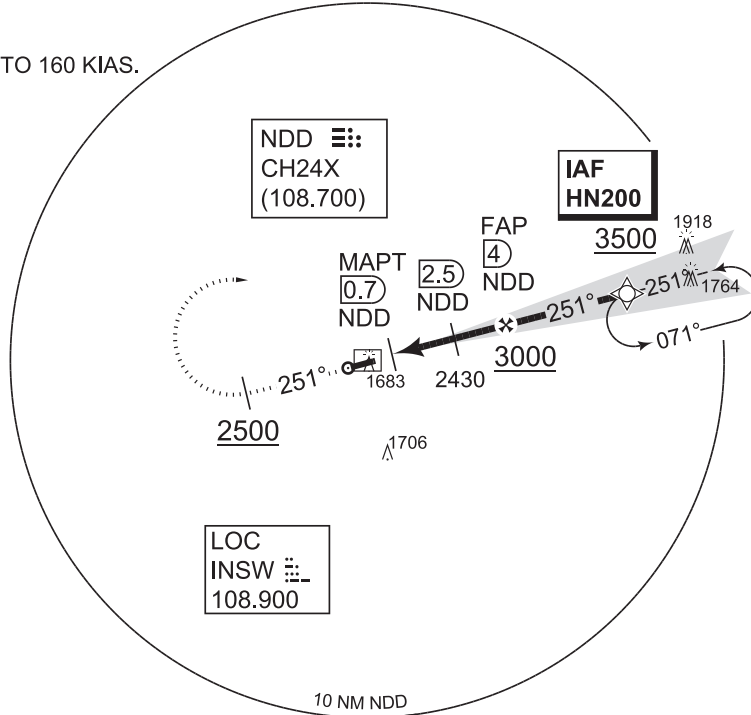
**ILS or LOC RWY 25
NIEDERSTETTEN (ETHN)**

AD ELEV 1536

LANGEN RADAR 398.650 135.725		STETTEN RADAR 269.250 123.300 127.190			STETTEN TOWER 134.205 356.675 122.100		
DME / LOCALIZER NDD CH24X / INSW108.9	APP COURSE 251°	GS INTCP ALT 3000	GS 3.4°	DAMDA See CAT	THR ELEV 1535	ALS-LENGTH 600 M	LDA 3969

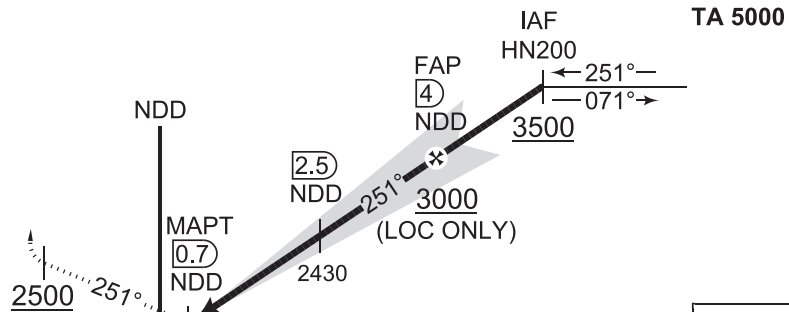
NOTE:
a) DME REQUIRED.
b) GNSS REQUIRED.
c) PROCEDURE LIMITED TO 160 KIAS.

IAF
49°25.52'N
010°08.75'E



MISSED APPROACH

Climb on course 251° to 3500 ft.
When passing 2500 ft, turn right inbound HN200.
[M251,A2500+;R]→HN200[3500+]



Dist THR	1	2	3	4
Altitude	1950	2310	2670	3000

THR ELEV 1535

TCH 49

CAT I

CATEGORY	A	B	C
ILS 25	1735 - 0.8/750 200 (200-0.8/1.2)		
LOC 25	1930 - 1.4 395 (400-1.4/1.5)	1930 - 1.4/395 (400-1.4/1.8)	
CIRCLING	1980 - 2.1 444 (500-2.1)	2030 - 2.3 494 (500-2.3)	2130 - 2.7 594 (600-2.7)

ILS or LOC RWY 25

49°23.51'N
009°57.49'E

NIEDERSTETTEN (ETHN)

CHANGE: CIRCLING MINIMA (234/24)

ZentrLuftOp 28 NOV 2024