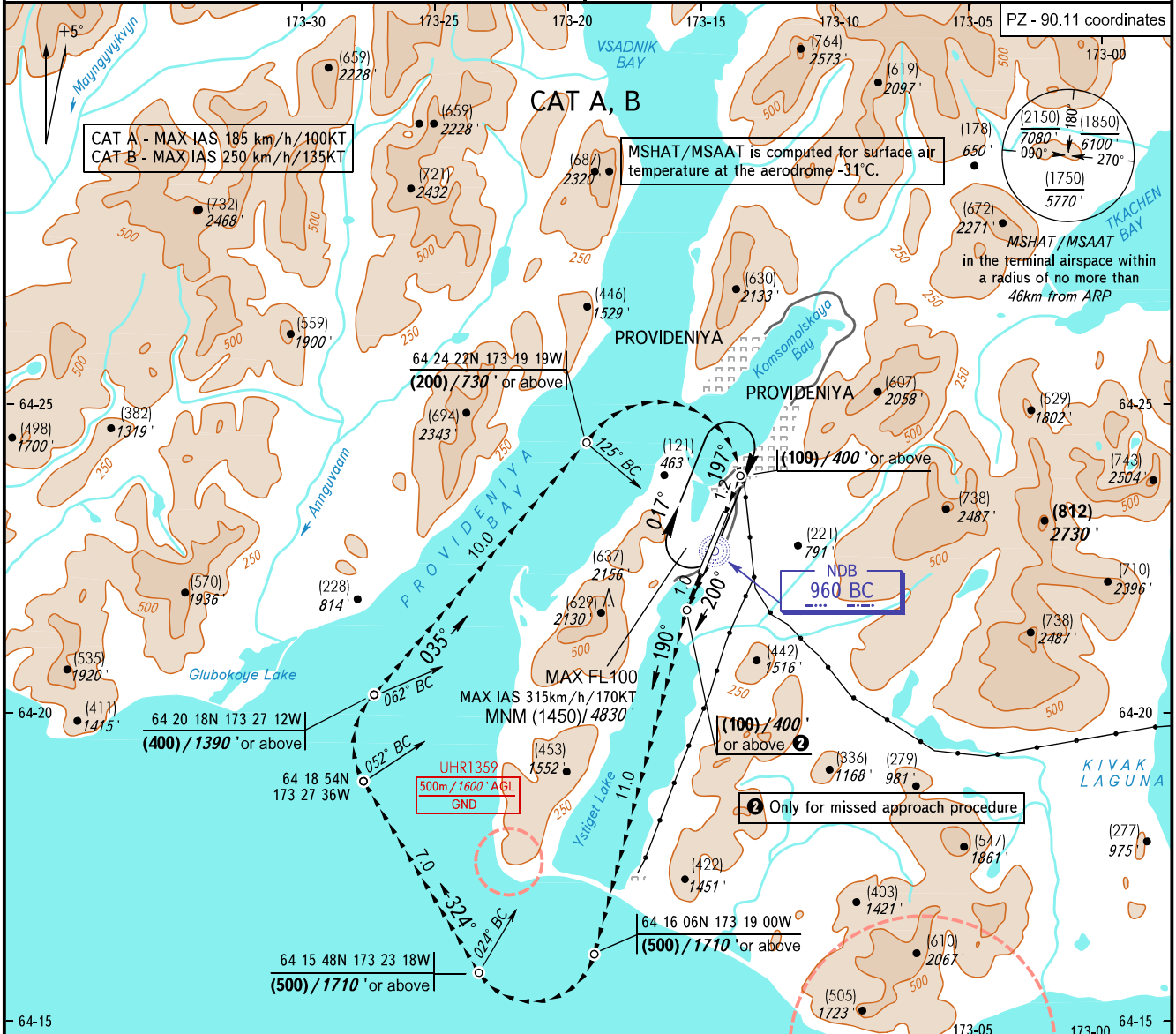


VISUAL  
APPROACH  
CHART - ICAO

PROVIDENIYA TOWER 119.300

PROVIDENIYA BAY, RUSSIA  
PROVIDENIYA  
RWY 20

TRANSITION LEVEL: ① TRANSITION HGT: (2150) TRANSITION ALT: 7080' AD ELEV: 21m / 70' THR ELEV: 20.5m / 68'



OCA(H)		A	B	C	D
Straight-in Approach					
Circling		1140/(1120) 3750'	1140/(1120) 3750'		

**MISSED APPROACH**  
Climb on track 197° to (100)/400' or above, then according to chart.

**WARNING:**  
1. Increased turbulence with down-draughts can be expected.  
2. When visual references are lost: turn to NDB BC to join the holding area climbing to (1450)/4830' or above.

**NOTE:**  
Missed approach shall be executed under VFR.

① TRANSITION LEVEL:  
- FL090 when QFE is 760mm mercury column (1013 hPa) or above;  
- FL100 when QFE is 733mm mercury column (977 hPa) or above, but less than 760mm mercury column (1013 hPa);  
- FL110 when QFE is less than 733mm mercury column (977 hPa).

CHANGE: New chart