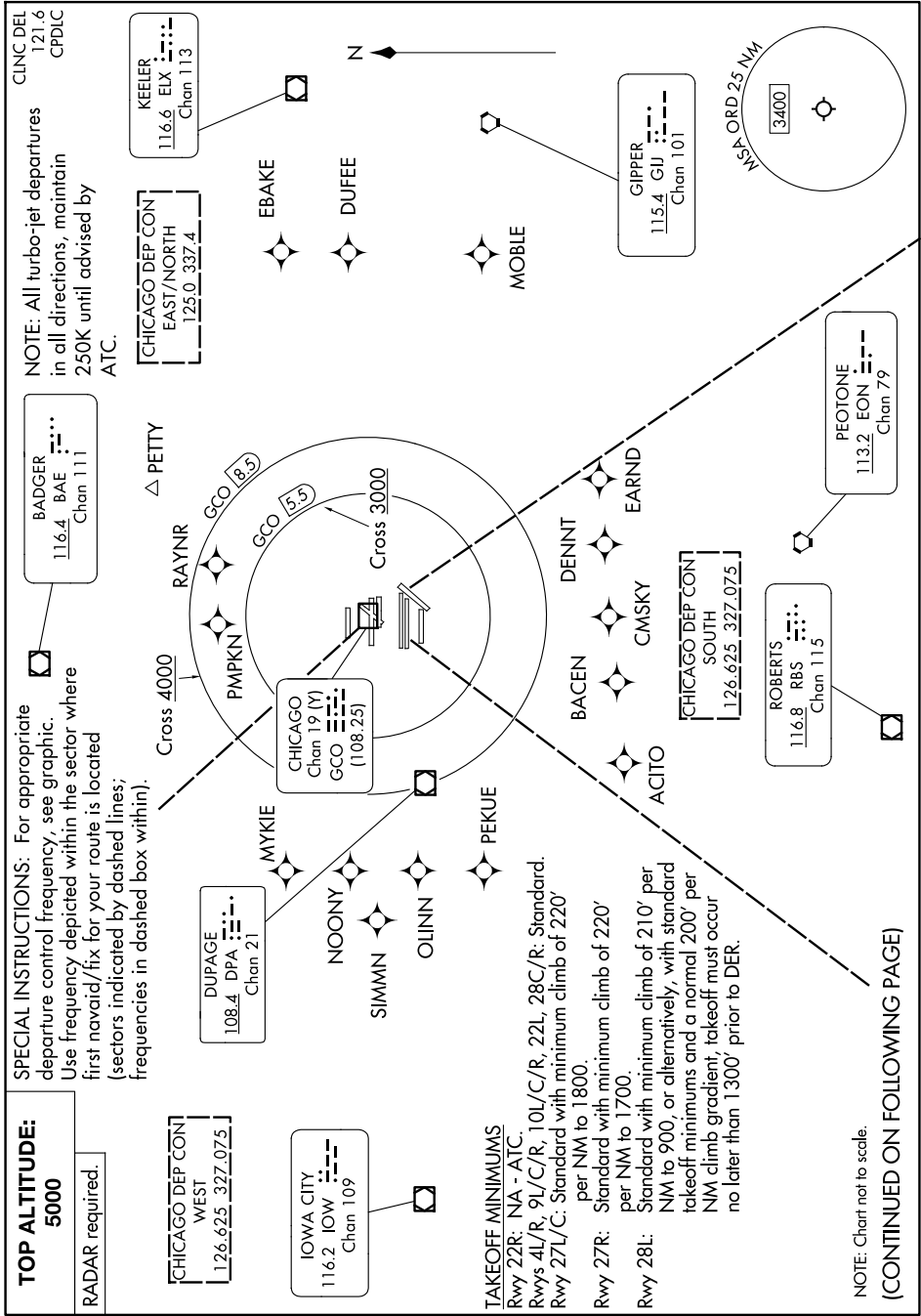


# O'HARE EIGHT DEPARTURE



EC-3, 20 MAR 2025 to 17 APR 2025

EC-3, 20 MAR 2025 to 17 APR 2025

**TOP ALTITUDE:**  
5000  
RADAR required.

CHICAGO DEP CON  
WEST  
126.625 327.075

IOWA CITY  
116.2 IOW  
Chan 109

**TAKEOFF MINIMUMS**  
Rwy 22R: NA - ATC.  
Rwys 4L/R, 9L/C/R, 10L/C/R: Standard.  
Rwy 27L/C: Standard with minimum climb of 220' per NM to 1800.  
Rwy 27R: Standard with minimum climb of 220' per NM to 1700.  
Rwy 28L: Standard with minimum climb of 210' per NM to 900, or alternatively, with standard takeoff minimums and a normal 200' per NM climb gradient, takeoff must occur no later than 1300' prior to DER.

NOTE: Chart not to scale.  
**(CONTINUED ON FOLLOWING PAGE)**

# O'HARE EIGHT DEPARTURE