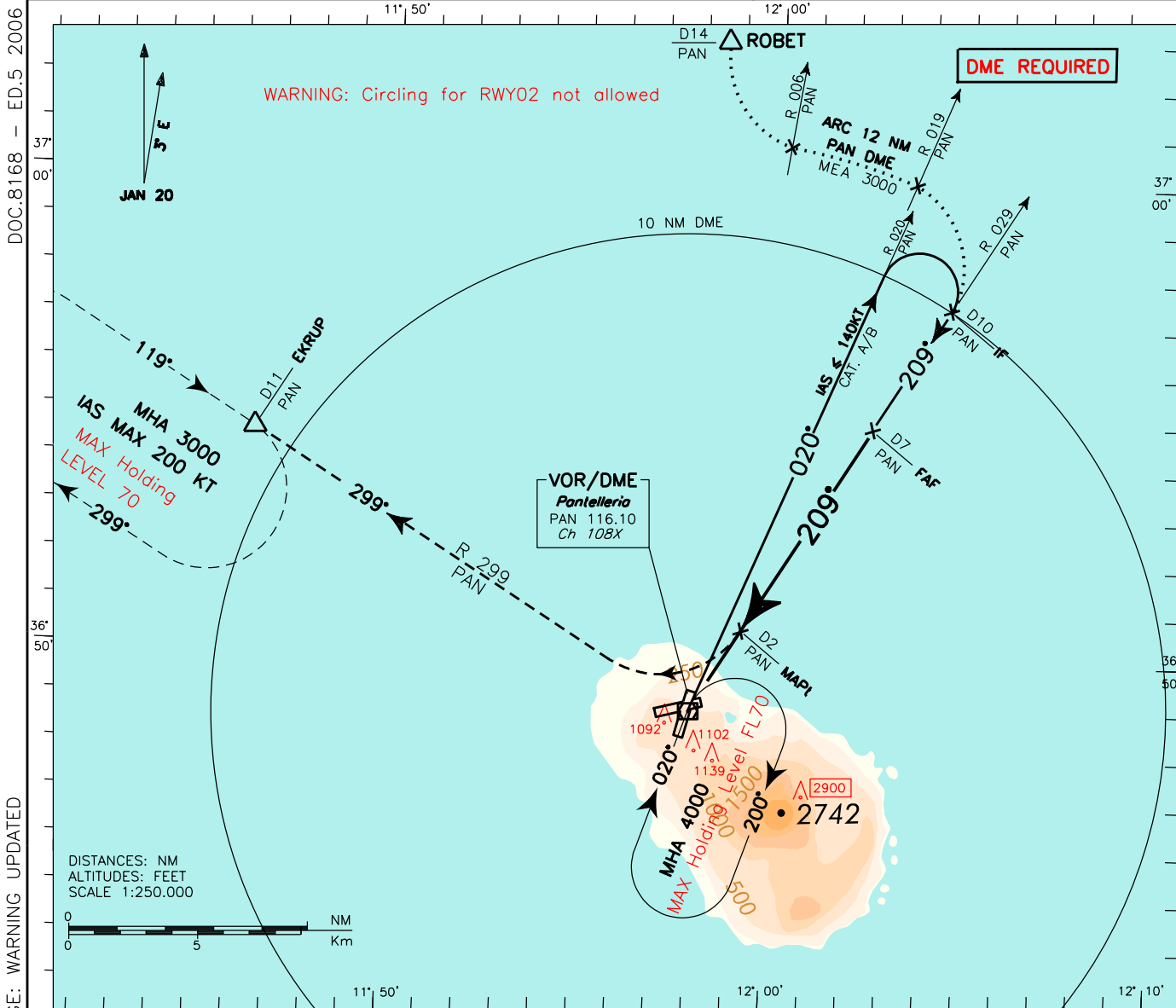


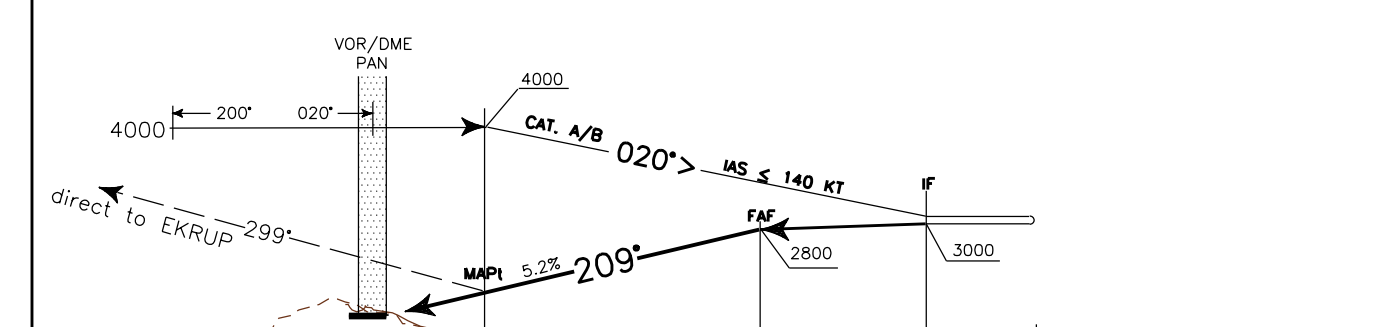
ICAO - INSTRUMENT APPROACH CHART

AMDT.4 - ED.5 2006	REMARK: Final approach track off set 4° from RWY center line. RWY center line intercepted 1594 m before THR 20.	APP Pantelleria APP 119.350	AD ELEV 629	LICG PANTELLERIA VOR RWY 20 (CAT. A/B)
		TWR Pantelleria TWR 118.450 122.100		



TRANSITION ALT 5000

MISSED APPROACH: Not later than 2 NM before PAN DME, climb to 3000 ft turning right to intercept and follow RDL 299 PAN VOR bound to EKRU, to be reached at 3000 ft.



PAN DME	THR ELEV 587	D1	D2	D3	D4	D5	D6	D7	D8	D9	D10	D11	D12	D13	D14	D15	D16	D17	PAN DME				
6	5	4	3	2	1	0	1	2	3	4	5	6	7	8	9	10	11	12	13	14	15	16	17
NM																							

STRAIGHT-IN LANDING RWY 20		CIRCLE TO LAND			CIRCLING SECTORS	GS	FT PER MIN	FAF-MAPt	MAPt-THR	PAN DME	ALT (HGT)	MSA 25NM PAN VOR
OCA(H)	MDA(H)	MAX KT	OCA(H)	MDA(H)								
1600(1013)	1600(1013)	100	1600(971)	2100(1471)	80	425	3 : 45	1 : 21	7	2800 (2213)	3900	
		135			100	530	3 : 00	1 : 05	6	2480 (1893)		
					120	635	2 : 30	0 : 54	5	2160 (1573)		
					140	740	2 : 09	0 : 46	4	1840 (1253)		
					160	960	1 : 53	0 : 41	3	1520 (933)		
2250M									2	1205 (618)		