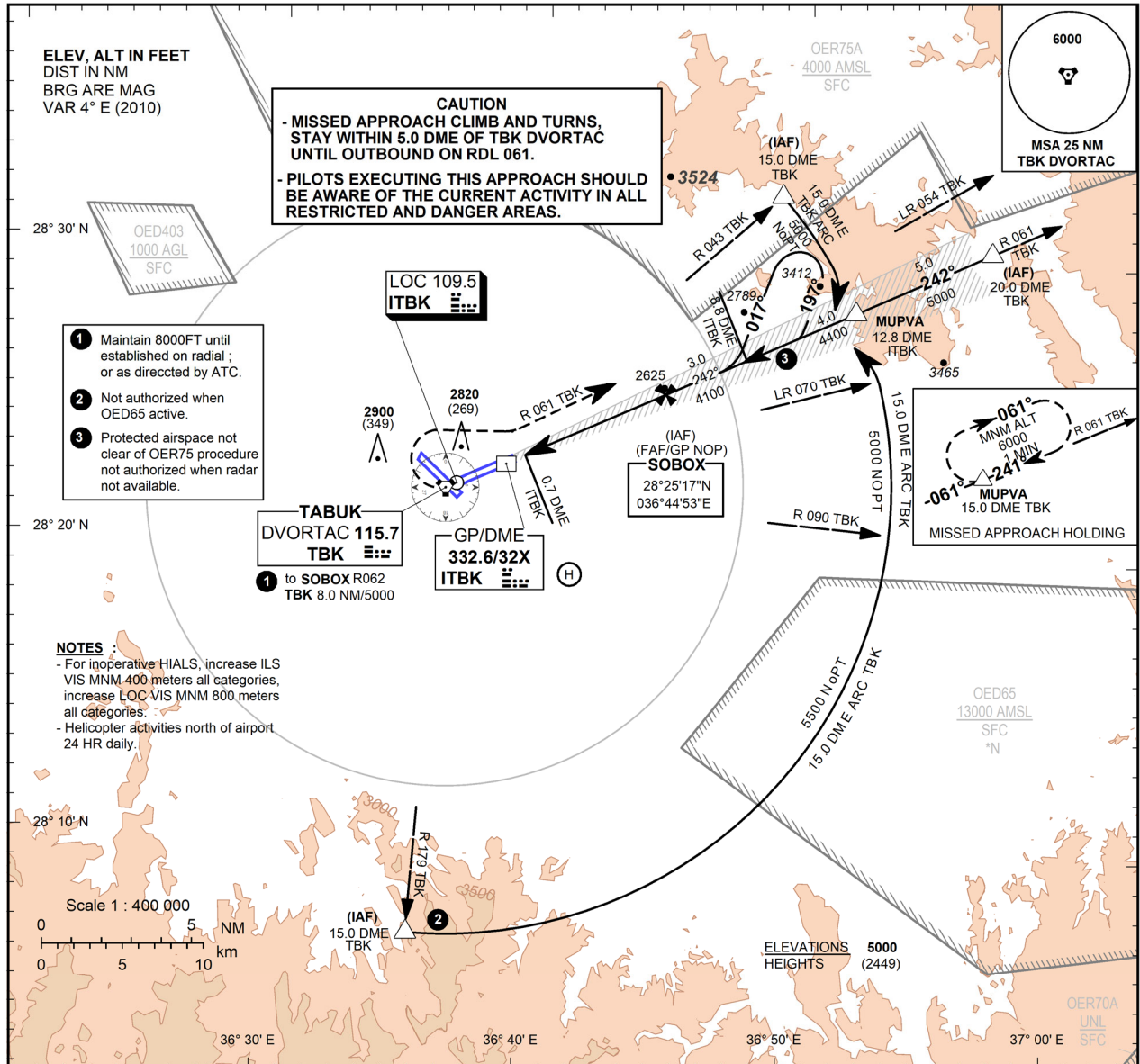


**INSTRUMENT  
APPROACH  
CHART - ICAO**

**AERODROME ELEV 2551 FT  
HEIGHTS RELATED TO  
TDZ RWY 24 - ELEV 2551 FT**

APP 119.7 124.5  
TWR 125.9  
SMC 126.3  
ATIS 128.2

**TABUK / Prince Sultan  
Bin Abdulaziz (OETB)  
ILS/DME RWY 24**



**TRANSITION ALT 13000  
TRANSITION LEVEL FL 150**

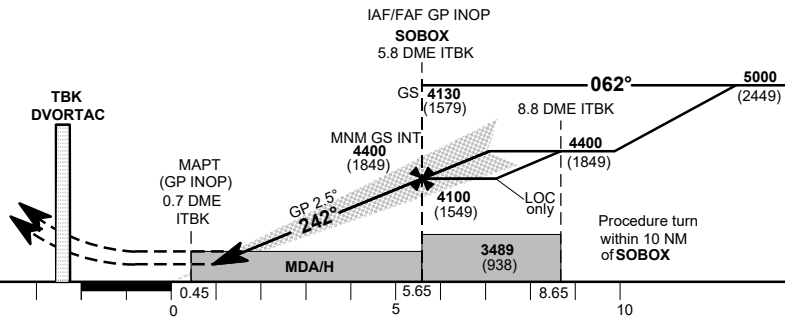
**MISSED APPROACH**

Climb to **3500 FT** directed **TBK DVORTAC**, then climbing right turn to **6000 FT** via **RDL 061** to **MUPVA 15.0 DME** and hold; or as directed by ATC.

**ILS TCH 51**

**THR ELEV 2551/TDZE 2551**

**NM to/from THR RWY 24**



Straight-in Approach	CAT I	ACFT CAT	A				B				C				D									
			DA(H)	2751 (200)			800			3000 (449)			800			1200			1600					
Circling	GP INOP	MDA(H)	3200 (649)				3300 (749)				3600				4000									
		VIS(m)	1600				3600				3880 (1329)				3615 (1064)				3349 (798)				3084 (533)	

AMDT-1, 02 JUN 11 (Corrected 19 SEP 13) CHANGE: Minor