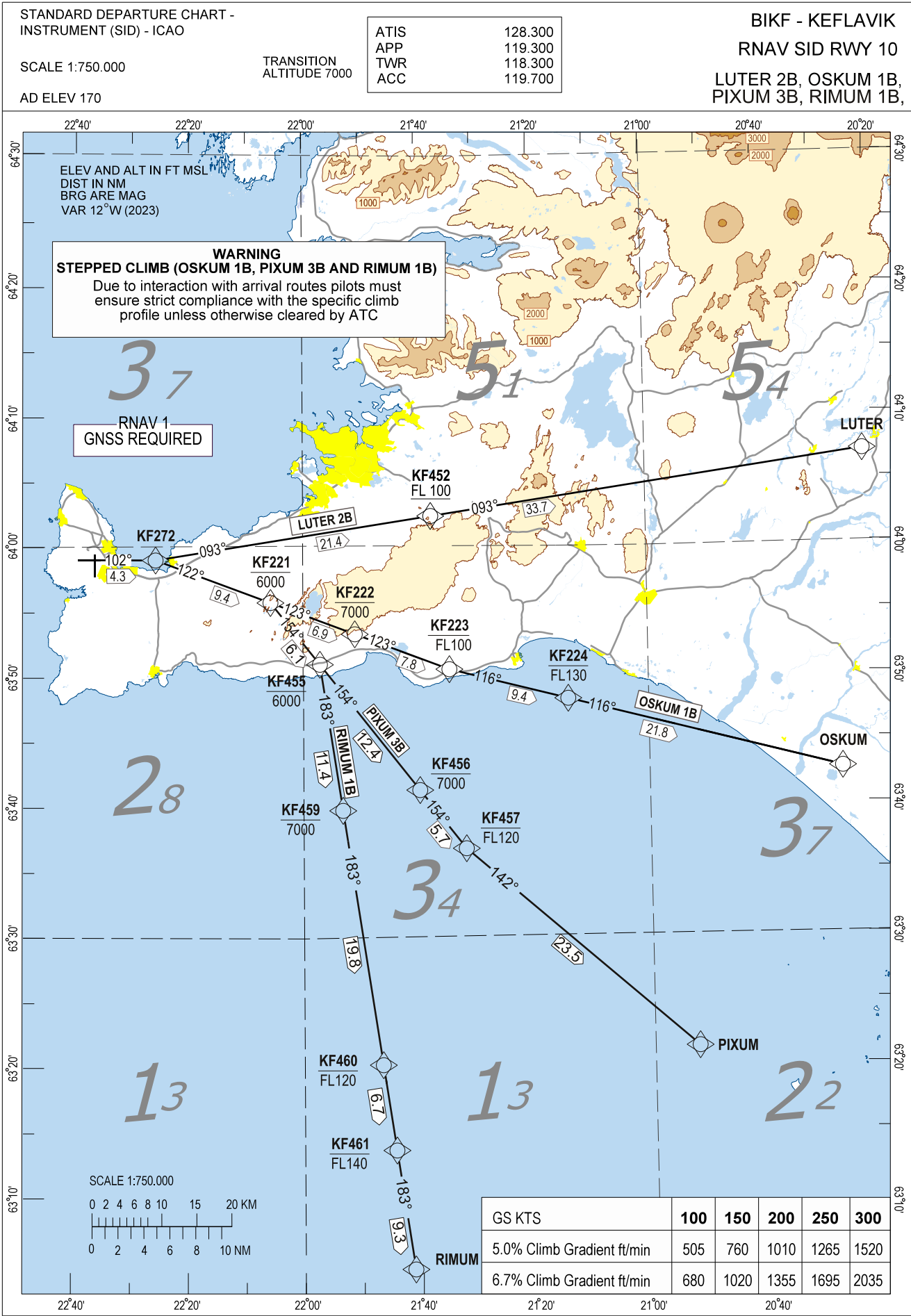


Keflavik RNAV SID RWY 10 - LUTER 2B, OSKUM 1B, PIXUM 3B, RIMUM 1B



STANDARD DEPARTURE ROUTES - INSTRUMENT (SID) - ICAO (RNAV1 SID BASED ON GNSS)			BIKF - KEFLAVIK	
			RNAV SID RWY 10 LUTER 2B, OSKUM 1B, PIXUM 3B, RIMUM 1B	
GENERAL:		RNAV1 (GNSS) approval required. Vectoring may be used when necessary. Loss of RNAV1 capability - Advise ATC. Maximum speed below FL100: 250 kt IAS unless otherwise stated under RESTRICTIONS or instructed by ATC. Expect first CPDLC Data Link Authority to be BIRD.		
RADIO COMMUNICATION FAILURE:		Set transponder to A 7600. Proceed in accordance with the departure clearance routing and restrictions then in accordance with enroute clearance. If under vectoring proceed in the most direct manner to join the cleared route and proceed in accordance with the ATC clearance. After that no route, flight level, or speed change shall be made before the Oceanic Exit Point unless a change is deemed necessary by the pilot in command to ensure the safety of the aircraft.		
ATC CLEARANCE:		Departing IFR flights shall obtain ATC clearance from "Keflavik Delivery" 121.000 MHz.		
NON RNAV 1 ACFT:		At first contact with "Keflavik Delivery" state "UNABLE RNAV 1", OMNI-DIRECTIONAL DEPARTURE available (see BIKF AD2.24).		
NOTE:		Change to STANDARD QNH at Transition Altitude or passing last altitude (Keflavik QNH) restriction if lower.		
NOISE ABATEMENT:		NADP-2		
DESIGNATOR	ROUTE	RESTRICTIONS	AFTER TAKE-OFF	
			CLIMB TO	CONTACT
LUTER 2B (LUTER TWO BRAVO DEPARTURE)	To KF272 on course 102°, to KF452, to LUTER	A MNM climb gradient of 6.7% i.e. 404 FT/NM is required until FL100. Cross KF452 at FL100 or above.	As cleared by ATC	Contact KEFLAVIK APP 119.300
OSKUM 1B (OSKUM ONE BRAVO DEPARTURE)	To KF272 on course 102°, right turn to KF221, to KF222, to KF223, to KF224, to OSKUM	WARNING - STEPPED CLIMB. A MNM climb gradient of 5.0% i.e. 304 FT/NM is required until 4000 FT. Cross KF221 at 6000 FT or below, cross KF222 at 7000 FT or below, cross KF223 at FL100 or below, cross KF224 at FL130 or below.	Follow SID altitude restricitons to level cleared by ATC	Contact KEFLAVIK APP 119.300
PIXUM 3B (PIXUM THREE BRAVO DEPARTURE)	To KF272 on course 102°, right turn to KF221, right turn to KF455, to KF456, to KF457, to PIXUM.	WARNING STEPPED CLIMB. A MNM climb gradient of 5.0% i.e. 304 FT/NM is required until 4000 FT. Cross KF221 at 6000 FT or below, Cross KF455 at 6000 FT or below, Cross KF456 at 7000 FT or below, Cross KF457 at FL120 or below.	Follow SID altitude restricitons to level cleared by ATC	Contact KEFLAVIK APP 119.300
RIMUM 1B (RIMUM ONE BRAVO DEPARTURE)	To KF272 on course 102°, right turn to KF221, right turn to KF455, to KF459, to KF460, to KF461, to RIMUM	WARNING STEPPED CLIMB. A MNM climb gradient of 5.0% i.e. 304 FT/NM is required until 4000 FT. Cross KF221 at 6000 FT or below, Cross KF455 at 6000 FT or below, Cross KF459 at 7000 FT or below, Cross KF460 at FL120 or below, Cross KF461 at FL140 or below.	Follow SID altitude restricitons to level cleared by ATC	Contact KEFLAVIK APP 119.300
CHANGES: RADIO COMMUNICATION FAILURE				